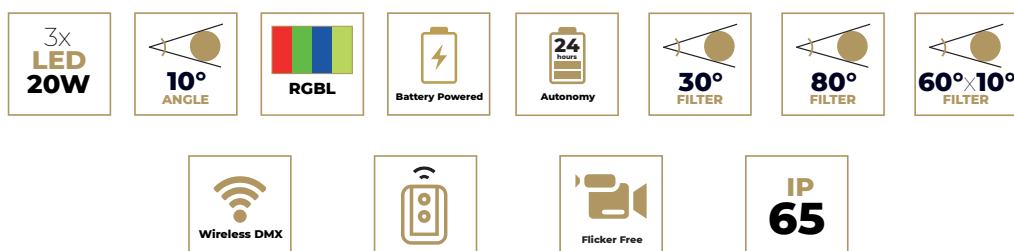




**Alcor** is equipped with 3 x 20W RGB+Lime LEDs. Compact, lightweight, with long autonomy and an elegant aluminum case, it will be the perfect ally for all event operations, both indoors and outdoors, thanks to its IP65 rating.

**Alcor** comes with 3 filters (30°, 80° and 60° x 10°) to adapt its opening angle to any situation.

**Alcor** is also equipped with an on-board wireless DMX system (Wireless Solution compatible) and a remote control for its management. A wide choice of accessories is available for every application



# TECHNICAL DATASHEET

# ALCOR

## Source

Engine	RGB Lime
LED Watts	3x20W
Engine CCT	20300K (full RGBL)
Engine Life (L70)	> 55000 H
Refresh Rate	10 KHz
Dimming	Electronic - 16 bits
Dimming Curves	Linear, Square, Inv Square, S-curve
Dimming Modes	Dim0 (0s), Dim1 (0.25s), Dim2 (0.5s), Dim3 (0.75s), Dim4 (1s)
Strobe Speed	1 - 25 Hz
Strobe Modes	Standard, Pulse, Random

## Electrical

Max Consumption (Charging)	31.5W
Battery Voltage	12V DC
Charger Voltage Range	
Primary	110V/240VAC - 50Hz/60Hz
Secondary	12.6VDC - 2.5A - 31.5W
Charger Power Factor	0.48@110V - 0.47@240V
Charger Current (Max)	0.65A@110V - 0.3A@240V
Connector	12V DC Jack
Battery	9 x ICR21700 3.7V 15000mAh - 11.1V/12.6V 720g
Battery Cycle life	300 (@80%)
Battery Runtime	24H (1 color - STD mode) STD mode full : > @8H LIVE mode full : > @3H

## Compliance & Protection

IP Rating	IP 65
Certification	CE, Rohs

## Optical

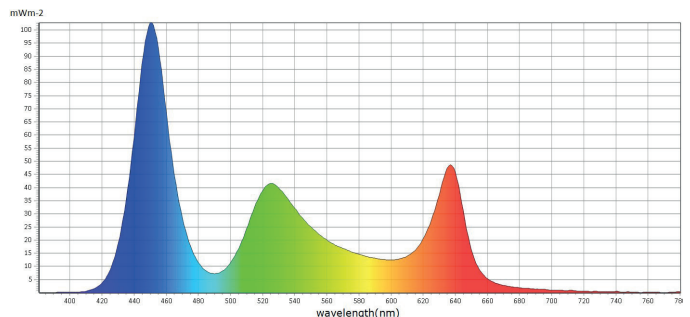
Lens Diameter	39mm (individual) 88mm (total)
---------------	-----------------------------------

## Colour System

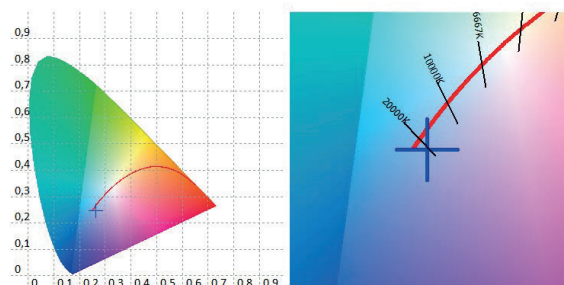
Colour System	RGBL (Native), Virtual Macros (CCT/Gel)
Control	8 bits

## Performances

Fixture Luminous Flux (Max)	1385 lm
Fixture Illuminance	Narrow: 1612 lux@5m 10° W 30° Filter: 158 lux@5m 30°
Fixture CCT Output White Macros	19000K - Full RGBL 2700K - 10000 K
CRI	Native: 73.03 @4000k: 78.03
Tm30	Native: 75.18 @4000k: 83.07
TLCI	Native: 63.25 @4000k: 70.09
CQS	Native: 84.52 @4000k: 87.70

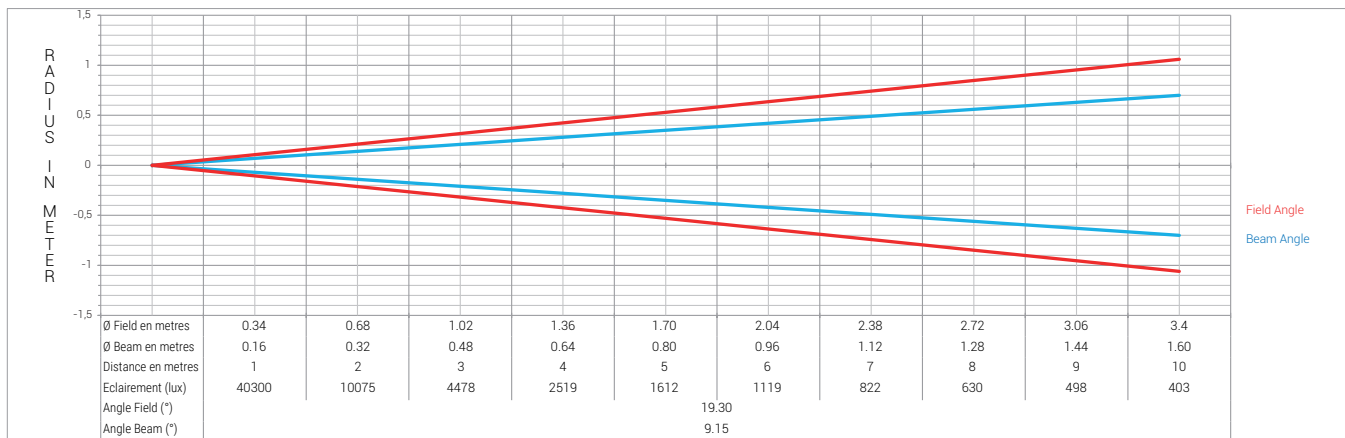


■ CIE1931

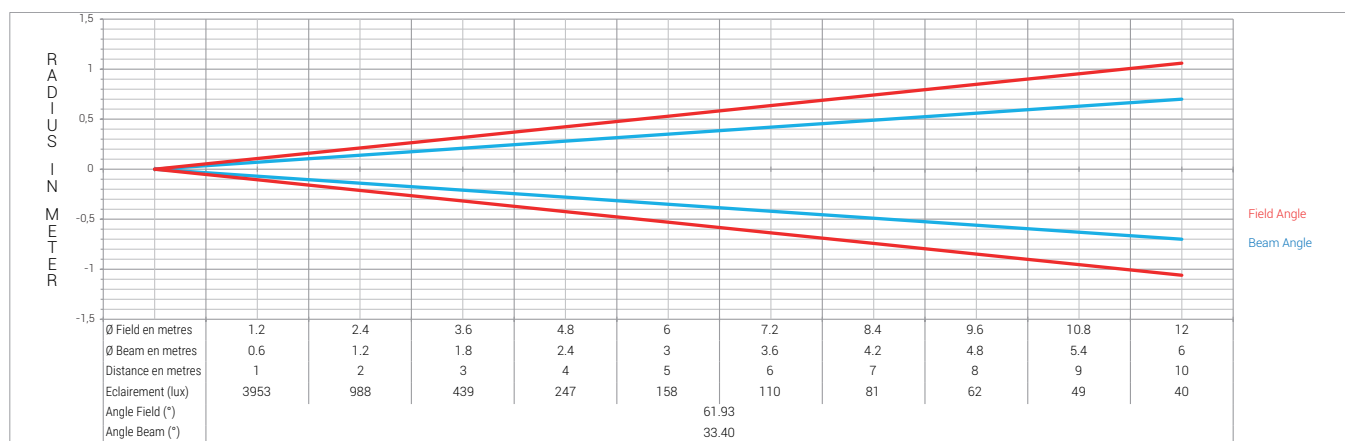


## Photometry

### Native 10°



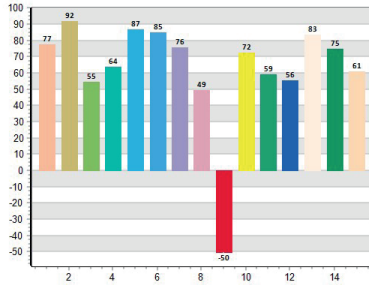
### With 30° Filter



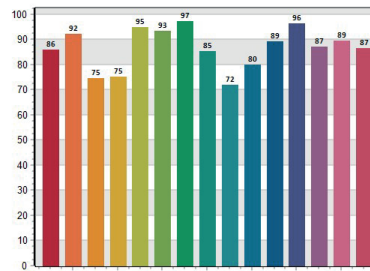
## Colorimetry

### Native

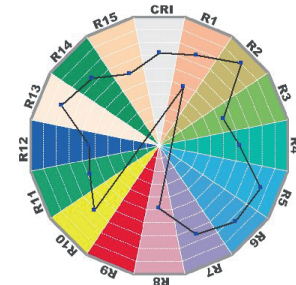
■ CRI: 73,03



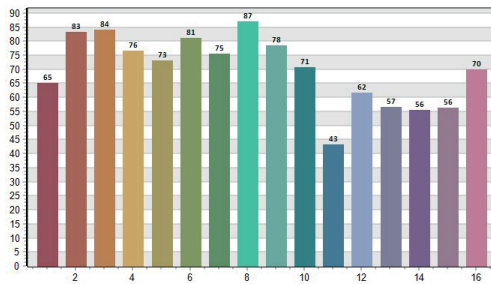
■ CQS: 84,52



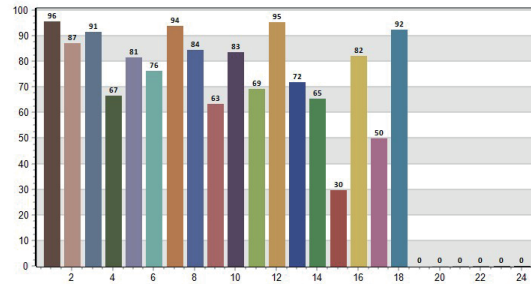
■ CRI-2



■ TM30: 75,18

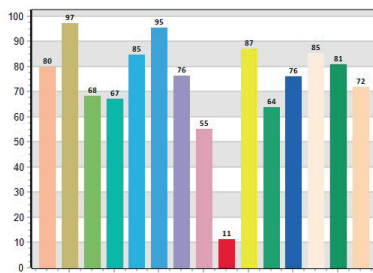


■ TLCI: 63,25

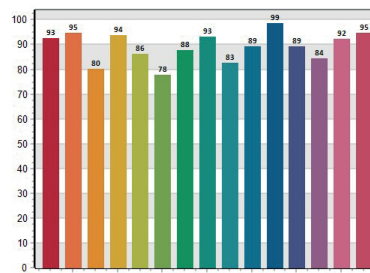


### @4000K (Macro)

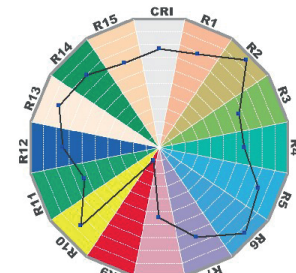
■ CRI: 78,03



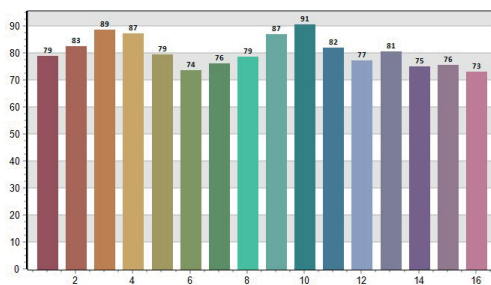
■ CQS: 87,70



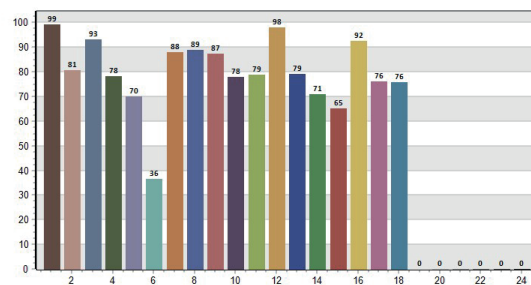
■ CRI-2



■ TM30: 83,07



■ TLCI: 70,09



[Find the complete photometry here :](#)

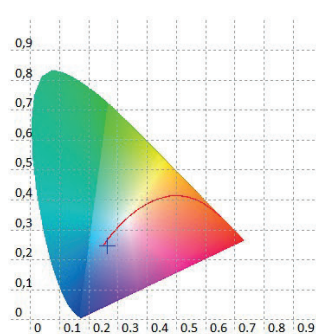


## Color & Filters

Red	x: 0.6935 / y: 0.3053
Green	x: 0.1778 / y: 0.7289
Blue	x: 0.1562 / y: 0.0290
Lime	x: 0.4157 / y: 0.5535
Full RGBL	x: 0.2632 / y: 0.2477
10000 K (calibrated macro)	CCT: 11482 K x: 0.2770 / y: 0.2747
5600K (calibrated macro)	CCT: 5885 K x: 0.3306 / y: 0.3279
4000 K (calibrated macro)	CCT: 3913 K x: 0.3802 / y: 0.3647
2700 K (calibrated macro)	CCT: 2618 K x: 0.4581 / y: 0.3973

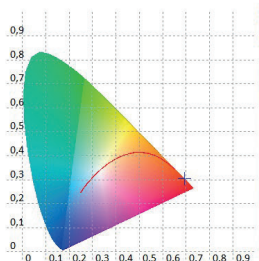
## RGBL@ 100%

■ CIE1931



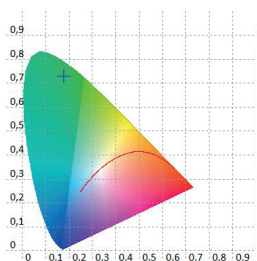
## Red @ 100%

■ CIE1931



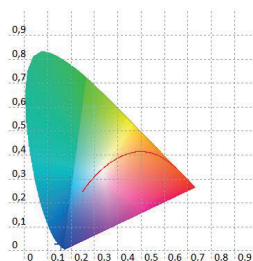
## Green @ 100%

■ CIE1931



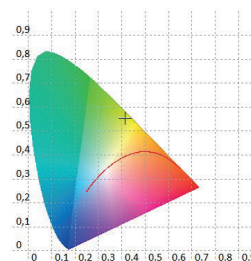
## Blue @ 100%

■ CIE1931



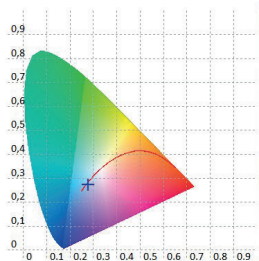
## Lime @ 100%

■ CIE1931



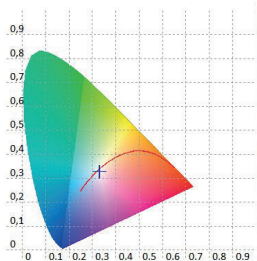
## 10000 K (calibrated)

■ CIE1931



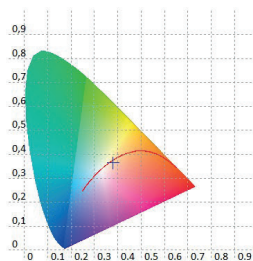
## 5600 K (calibrated)

■ CIE1931



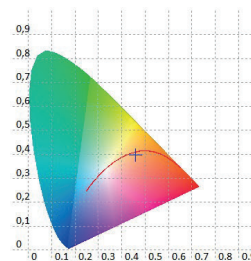
## 4000 K (calibrated)

■ CIE1931



## 2700 K (calibrated)

■ CIE1931



# TECHNICAL DATASHEET

# ALCOR

## Control

DMX Control	Wireless
DMX Modes	4 Modes
Channel Count	4 Ch (RGLB) 5 Ch (RGLB + Dimmer) 9 Ch mode 11 Ch mode
Local Control	Colour LCD panel Navigation buttons
IR Remote	Yes
Local Control	Yes
Wireless DMX	Wireless Solution compatible - Mode G3 LumenRadio Compatible - Legacy Mode

## Connectors

Power	12V DC Jack (on fixture) Powercon (on flight case)
-------	---

## Thermal

Cooling System	Natural convection
Cooling Modes	N/A
Max Ambient Temperature (Ta Max)	45°C
Min Ambient Temperature (Ta Min)	-10°C
Max Surface Temperature, steady state, at Ta 40°	55°C
Total Heat Dissipation (Calculated +/- 10%)	108 BTU/h - 31.5W@12VDC
Heat Dissipation (standby) (Calculated +/- 10%)	N/A

## Material

Housing	Die Cast Aluminium
---------	--------------------

## Included

Magnetic Filter Holder	1
IR Remote	1
Filter Set (1 x 30° - 1 x 80° - 1 x 60x10°)	1
Charger	Carton Box : 1 ABS Case : 6 Fligh Case : Global 12 in 1
Quick Start	Yes

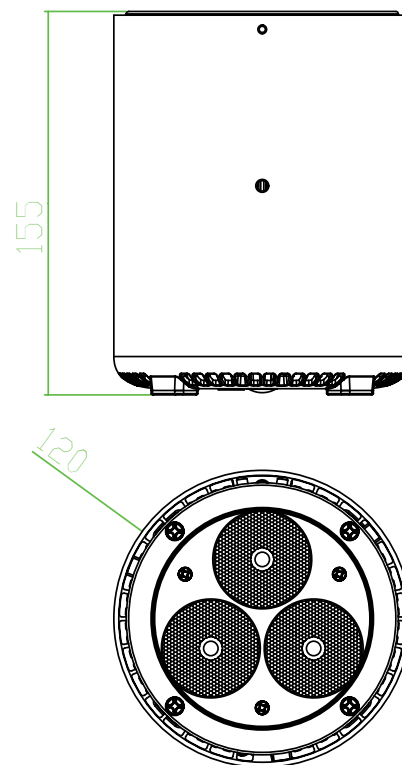
## Physical

### Fixture

ØxH	120mm x 155mm
Weight	2 Kg

### Carton Box

LxWxH	195mm x 272mm x 222mm
Wheight	2.7 Kg



## Download

[Manual](#)



[DMX Chart](#)



[All Downloads](#)



# TECHNICAL DATASHEET

# ALCOR

## ABS Case of 6 Units

LxWxH	670mm x 330mm x 510mm
Weight (With Fixture & Acc)	19.2 Kg

## Flight case of 12 Units

LxWxH	800mm x 600mm x 450mm
Weight (With Fixture & Acc)	52.5 Kg



## Accessories Options

White Cover



Chrome Cover



Gold Cover



Top Hat



Yoke



Top Ball



Top Tube



Top Tube 1m



Top Tube 1.5m



Telescopic Tube



Rigging Kit



Top Tube 50 cm



Base Plate



---

# *Starway*

22 Rue Édouard Buffard  
77144 Montevrain  
**France**

[starway.eu](http://starway.eu)

---