



Roma WET is a wash moving head equipped with 19x20W RGB + Lime LEDs. It also features a fast zoom range from 8 to 48°. The addition of Lime allows for the creation of saturated colors as well as powerful and calibrated whites with the BC Color System technology. Besides the possibility of independently calibrating colors and whites to perfectly integrate with an existing lighting setup, this system allows for managing colors from a given white, as if the fixture were used with a gel.

With its various DMX modes, **Roma WET** can be controlled in native RGB + Lime mode, X&Y mode within the CIE 1931 color space (where the color calibration IC automatically calculates the required LED channel values to reach a target x,y coordinate), or via RGB + White and CMY emulation modes.

These emulation modes retain the benefits of the Lime LED while maintaining traditional color management workflows.

Roma WET will be your ally for all medium to large-scale performances both indoors and outdoors with its IP65 rating.



Source

| | |
|-------------------|---|
| Engine | RGB Lime (Osram) |
| LED Watts | 19x20W |
| Engine CCT | 20300K (full RGBL) |
| Engine Life (L70) | > 55000 H |
| Refresh Rate | 900 Hz to 25 KHz |
| Dimming | Electronic - 16 bits |
| Dimming Curves | Linear, Square, Inv Square, S-curve |
| Dimming Modes | Dim0 (0s), Dim1 (0.25s), Dim2 (0.5s), Dim3 (0.75s), Dim4 (1s) |
| Strobe Speed | 1 - 20 Hz |
| Strobe Modes | Standard, Pulse, Random |

Electrical

| | |
|---------------------------------|--------------------------|
| Max Consumption | 500W |
| Standby Power Consumption | 5W |
| Voltage Range | 110V/240V - 50Hz/60Hz |
| Power Factor | 0.99@110V - 0.98@240V |
| Current (Max) | 4.96A@110V - 1.66A@240V |
| Fuse | T6.3A@250V |
| Connector | PowerCON True1 (In/Out) |
| Battery | ICR14430 3.7V 500mAH 20g |
| Max Fixtures per Circuits (16A) | 3@110V - 6@240V |

Compliance & Protection

| | |
|---------------|----------|
| IP Rating | IP 65 |
| Certification | CE, Rohs |

Movement

| | |
|------------|------------------|
| Pan Range | 540° / 630° |
| Tilt Range | 270° |
| Résolution | 8 bits / 16 bits |

Optical

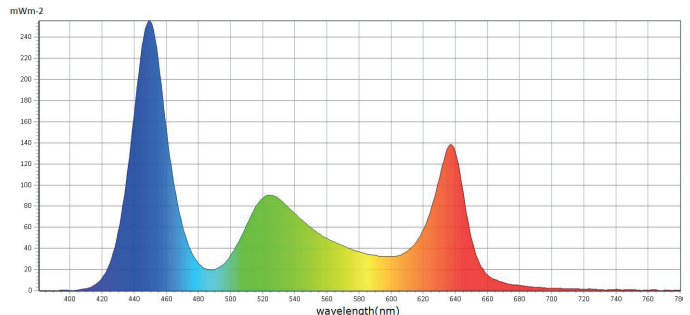
| | |
|---------------|----------|
| Lens Diameter | 202mm |
| Zoom Range | 8° - 51° |
| Zoom Ratio | 6.4 :1 |

Colour System

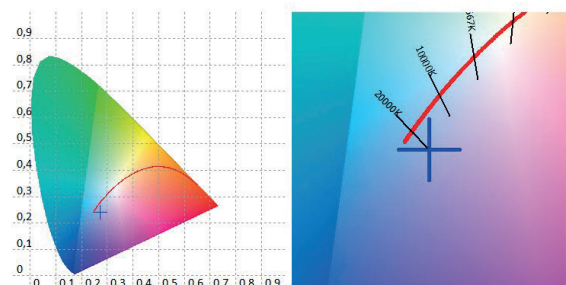
| | |
|---------------|---|
| Colour System | RGBL (Native), X&Y, RGBW (emulation), CYM (emulation) |
| Control | 8 bits / 16 bits |

Performances

| | |
|-----------------------------|---|
| Fixture Luminous Flux (Max) | 9700 lm |
| Fixture Illuminance | Narrow: 15357 lux@5m 8° Medium: 2868 lux@5m 21° Wide: 1275 lux@5m 51° |
| Fixture CCT Output | 1800 - 10000 K |
| CRI | Native: 64,61 @2700k: 82.32 |
| Tm30 | Native: 70.86 @2700k: 82.40 |
| TLCI | Native: 56.25 @2700k: 60.20 |
| CQS | Native: 82.93 @2700k: 84.74 |

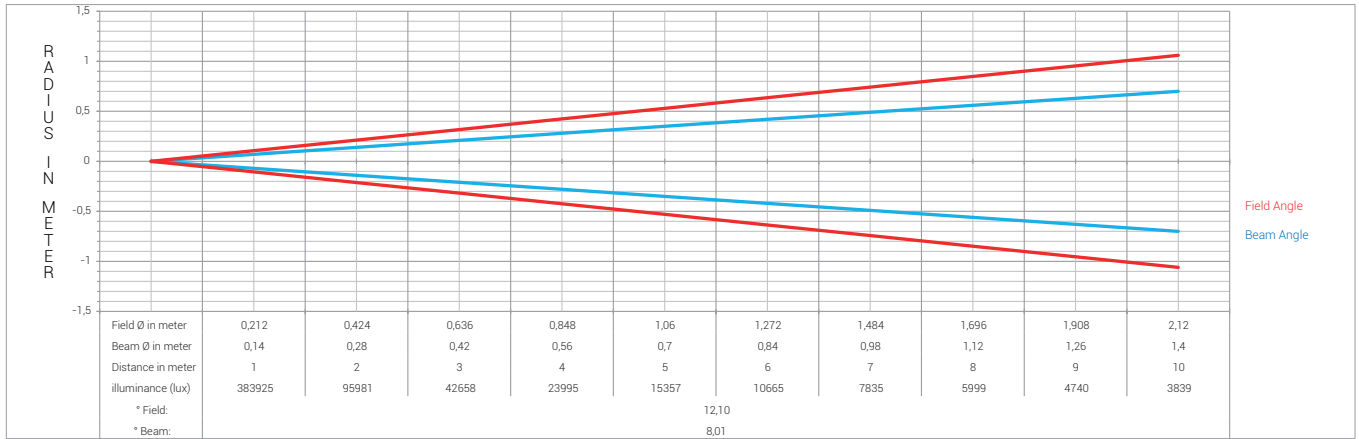


■ CIE1931

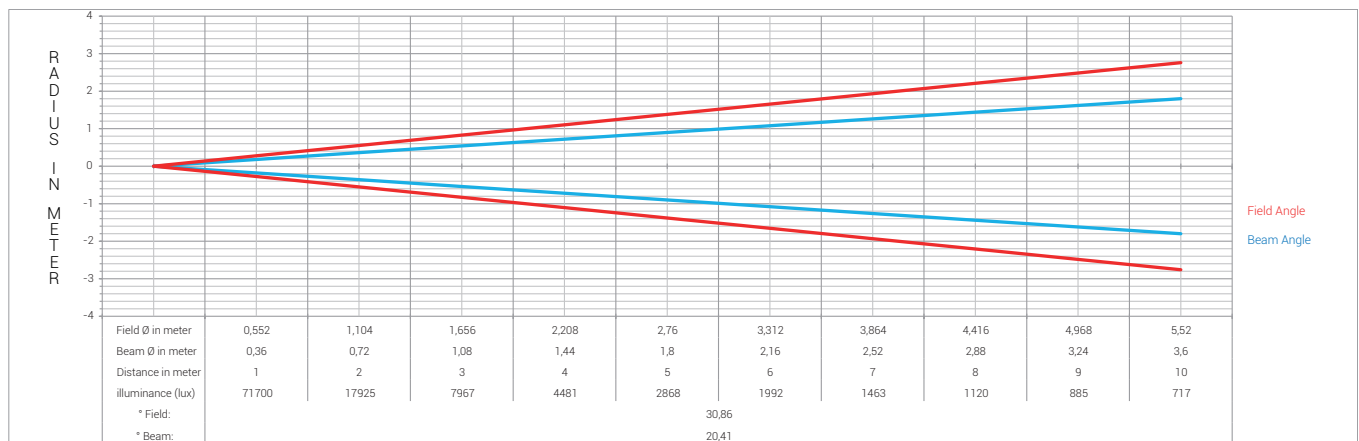


Photometry

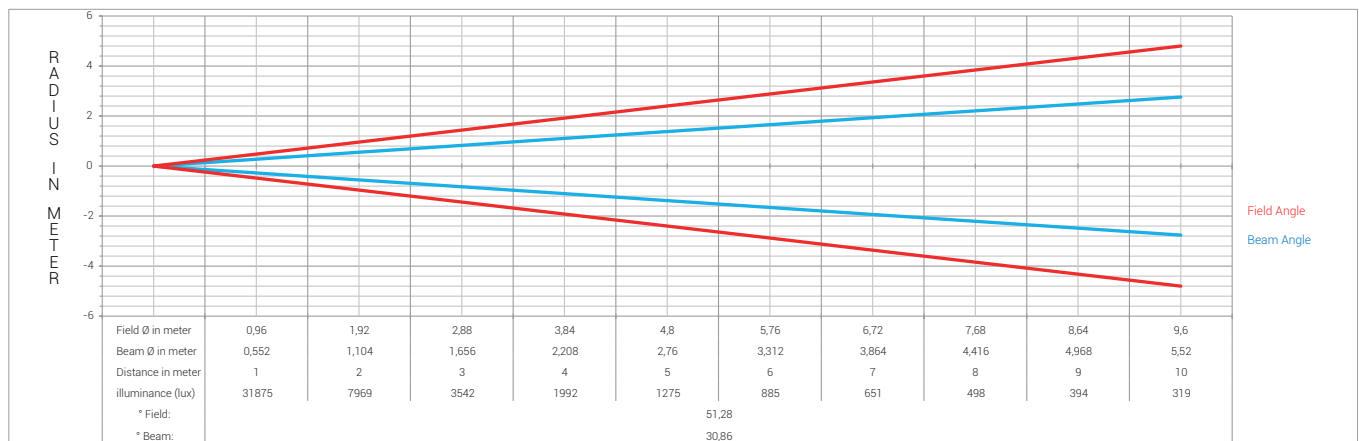
Narrow Angle



Medium Angle



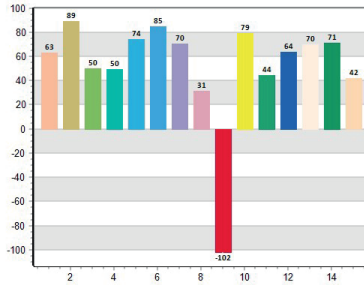
Wide Angle



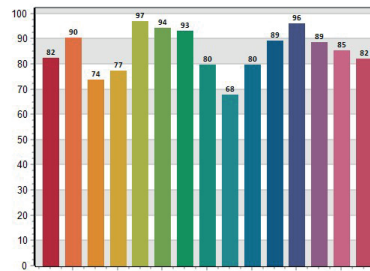
Colorimetry

Native

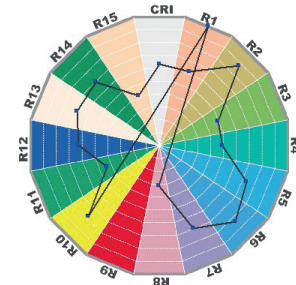
■ CRI: 64,13



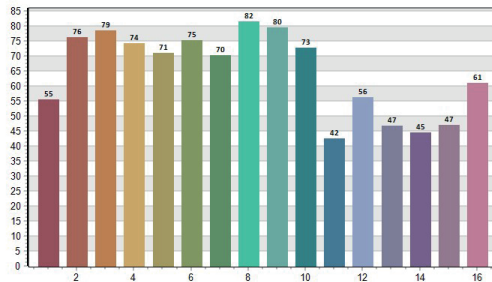
■ CQS: 82,93



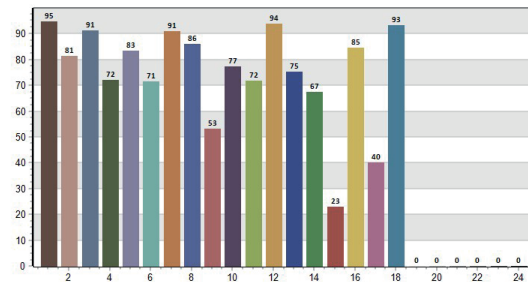
■ CRI-2



■ TM30: 70,86

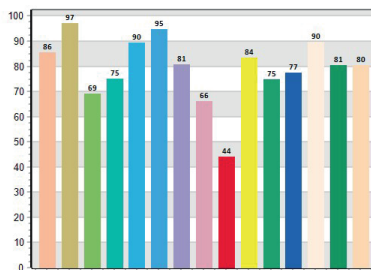


■ TLCI: 56,25

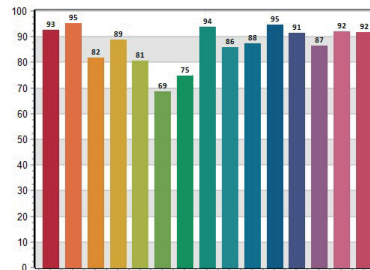


@2700K (Calibrated)

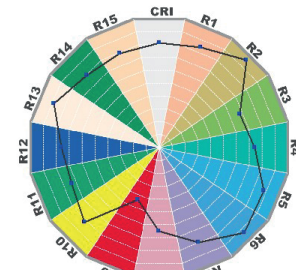
■ CRI: 82,32



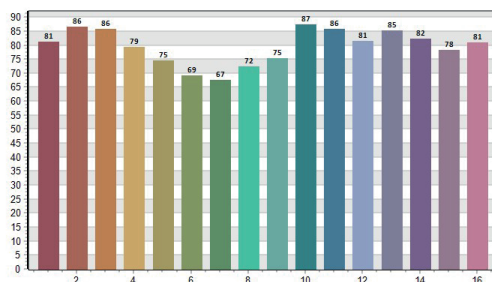
■ CQS: 84,74



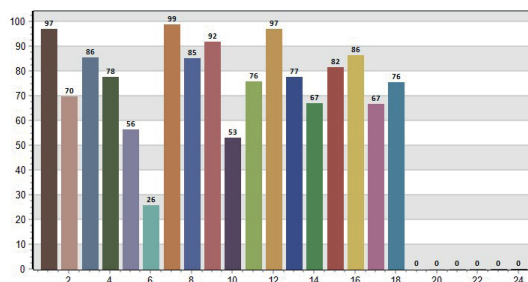
■ CRI-2



■ TM30: 82,40



■ TLCI: 60,20



[Find the complete photometry here :](#)

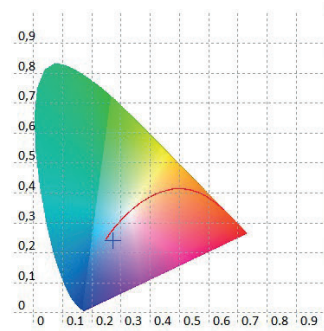


Color & Filters

| | |
|----------------------------|--------------------------------------|
| Red | x: 0.1533 / y: 0.1830 |
| Green | x: 0.2706 / y: 0.0682 |
| Blue | x: 0.4564 / y: 0.5337 |
| Lime | x: 0.4374 / y: 0.4127 |
| Full RGBL | x: 0.6934 / y: 0.3021 |
| 10000 K (calibrated macro) | CCT: 9764 K x: 0.1554 / y: 0.7541 |
| 5600K (calibrated macro) | CCT: 5631 K x: 0.5658 / y: 0.4326 |
| 4000 K (calibrated macro) | CCT: 4179 K x: 0.1521 / y: 0.0383 |
| 2700 K (calibrated macro) | CCT: 2684 K x: 0.5987 / y: 0.3965 |

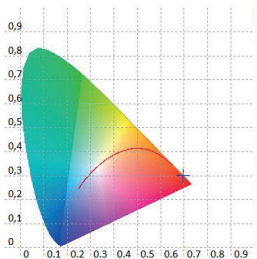
RGBL@ 100%

■ CIE1931



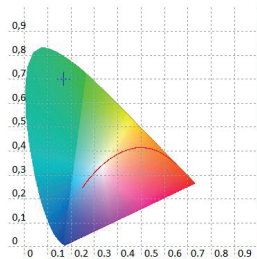
Red @ 100%

■ CIE1931



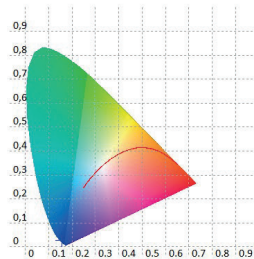
Green @ 100%

■ CIE1931



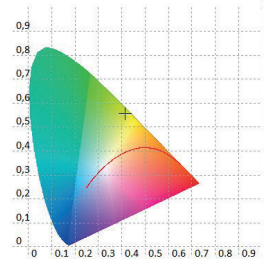
Blue @ 100%

■ CIE1931



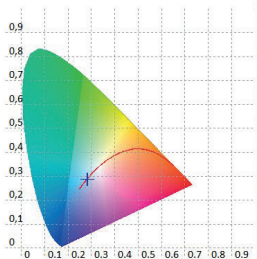
Lime @ 100%

■ CIE1931



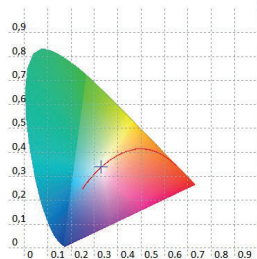
10000 K (calibrated)

■ CIE1931



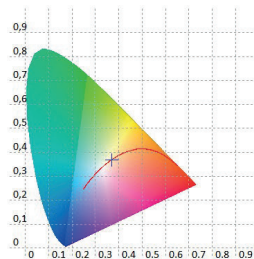
5600 K (calibrated)

■ CIE1931



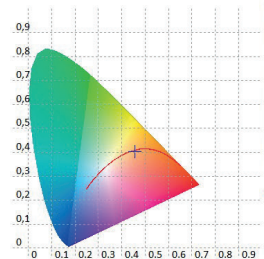
4000 K (calibrated)

■ CIE1931



2700 K (calibrated)

■ CIE1931



Control

| | |
|---------------|---|
| DMX Control | DMX (USITT DMX-512-A) RDM (ANSI/ESTA E1.20) |
| DMX Modes | 7 + 3 User Modes |
| Channel Count | RGBL - 8bit - 17 RGBL - 16bit - 21 CYM - 8bit - 16 CYM - 16bit - 19 RGBW - 8bit - 17 RGBW - 16bit - 21 X&Y (CIE1931) - 16bit - 17 |
| Local Control | Colour LCD panel Navigation buttons |
| RDM Functions | Yes |

Noise Level

| | |
|----------------|-----------|
| Fan Mode Auto | 45dB @ 1m |
| Fan Mode High | 53dB @ 1m |
| Fan Mode Quiet | 43dB @ 1m |

Connectors

| | |
|-------|--------------------------|
| Power | PowerCoN True 1 (In/Out) |
| DMX | XLR 5 Pin (In/Out) |
| USB | Upgrade purpose |

Thermal

| | |
|---|------------------------|
| Cooling System | Forced |
| Cooling Modes | Auto - High - Quiet |
| Max Ambient Temperature (Ta Max) | 45°C |
| Min Ambient Temperature (Ta Min) | -10°C |
| Max Surface Temperature, steady state, at Ta 40° | 68°C |
| Total Heat Dissipation (Calculated +/- 10%) | 1706 BTU/h - 500W@240V |
| Heat Dissipation (standby) (Calculated +/- 10%) | 17.06 BTU/h - 5W@240V |

TECHNICAL DATASHEET

roma wet

Material

Housing Die Cast Aluminium

Physical

Fixture

LxWxH 330mm x 250mm x 395mm

Weight 14.8 Kg

Carton Box

LxWxH 550mm x 480mm x 450mm

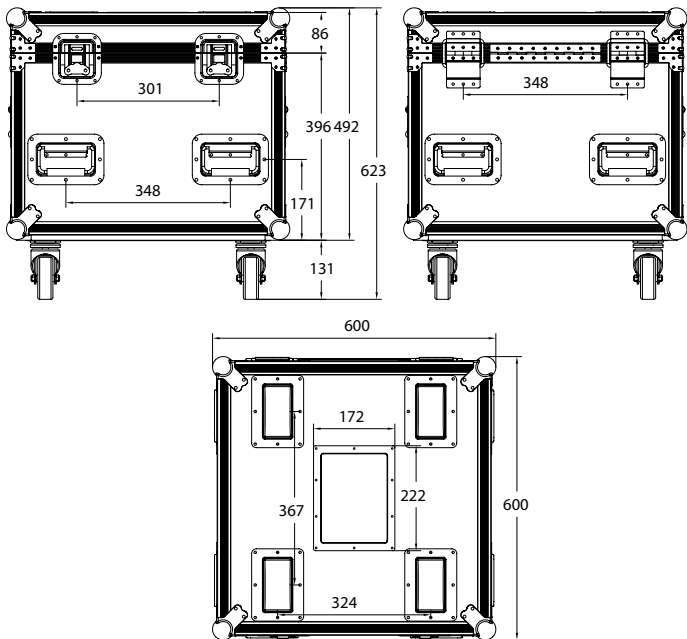
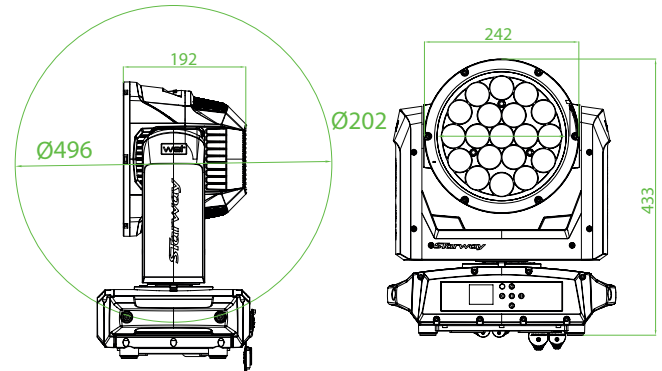
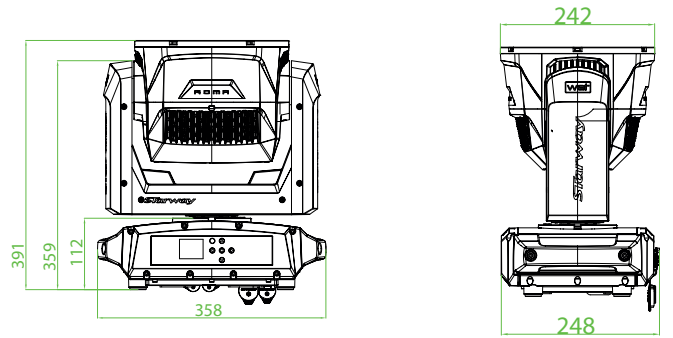
Weight 17 Kg

Flight case of 2 Units

LxWxH 600mm x 600mm x 623mm

Weight (Without Fixture) 30 Kg

Weight (With Fixture & Acc) 60 Kg



Included

| | |
|----------------|-------|
| Omega Brackets | 2 |
| Safety Chain | 1 |
| Powercord | 1.80m |
| Quick Start | Yes |

Download

[Manual](#)



[DMX Chart](#)



[All Downloads](#)



Starway

22 Rue Édouard Buffard
77144 Montevrain
France

starway.eu
