



Enzo WET is equipped with a 600W LED source developing a maximum flux of 28,750 lumens. Enzo WET offers all the tools needed to give free rein to designers' creativity, including: 5.5° to 45° zoom, CMY color mixing, progressive CTO filter, 7-color wheel, 7 rotating gobos, 8 fixed gobos, animation wheel, a 3-facet circular prism, a 6-facet linear prism, iris. One heavy frost, one medium frost, both progressive, and Full curtain framing shutters. Enzo WET packs all these features into a compact case weighing just 35.5 kg. Enzo WET will be the perfect ally for any show or fixed installation where powerful, compact spotlights are essential. It supports DMX, RDM, Art-Net, and sACN protocols, and includes a Wireless DMX Solution® transceiver, ensuring a simplified and efficient setup.

<b>LED 600W</b>	<b>5.5°-45° ZOOM</b>	<b>CMY</b>	<b>CTO</b>	<b>Color Wheel</b> + open	<b>Gobo Wheel</b> rotating + open	<b>Gobo Wheel</b> fixed + open	<b>Prism 3 facet</b>	<b>Linear 5 Prism</b>	<b>Heavy Frost</b>	<b>Medium Frost</b>
<b>IRIS</b>	<b>Framing Shutter</b>	<b>16-bit Dimmer</b>	<b>Flicker Free</b>	<b>540° 630° PAN</b>	<b>RDM</b> Remote Device Management	<b>sACN</b>	<b>ART NET</b> ETHERNET	<b>Wireless DMX</b>	<b>IP 65</b>	

# TECHNICAL DATASHEET

ENZO wet

## Source

Engine	White CW
LED Watts	600W
Engine CCT	7400K
Engine Life (L70)	> 20000 H
Refresh Rate	900 Hz to 25 KHz
Dimming	Electronic - 16 bits
Dimming Curves	Linear, Square, Inv Square, S-curve
Dimming Modes	Dim0 (0s), Dim1 (0.25s), Dim2 (0.5s), Dim3 (0.75s), Dim4 (1s)
Strobe Speed	1 - 20 Hz
Strobe Modes	Standard, Pulse, Random

## Electrical

Max Consumption	900W
Standby Power Consumption	82W
Voltage Range	110V/240V - 50Hz/60Hz
Power Factor	0.96@110V - 0.98@240V
Current (Max)	8.1A@110V - 3.9A@240V
Fuse	T12A@250V
Connector	PowerCON True1 (In/Out)
Battery	ICR14430 3.7V 500MAH 20g
Max Fixtures per Circuits (16A)	1@110V - 3@240V

## Compliance & Protection

IP Rating	IP 65
Certification	CE, Rohs

## Movement

Pan Range	540° / 630°
Tilt Range	270°
Résolution	8 bits / 16 bits

## Optical

Lens Diameter	115mm
Zoom Range	5.5° - 45°
Zoom Ratio	8.2 : 1

## Colour System

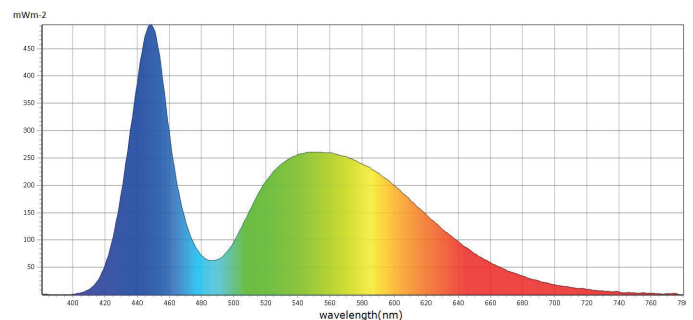
Colour System	Variable CYM, Variable CTO, 5 Colour Wheel + 2 Filters
Control	8 bits / 16 bits

## Image

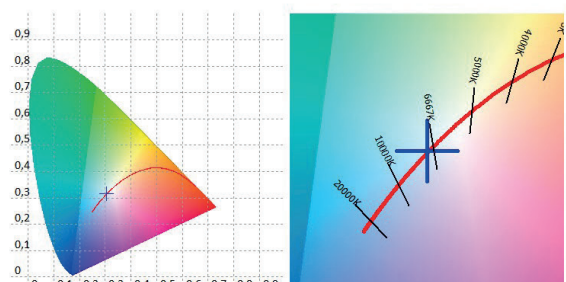
Rotating Gobos	7
Fixed Gobos	8
Prism	2
Animation Wheel	Yes
Iris	Yes
Frost	2
Framing	Yes

## Performances

Fixture Luminous Flux (Max)	13111 lm
Fixture Illuminance	Narrow: 58000 lux@5m 5.5° Medium: 16500 lux@5m 16° Wide: 2800 lux@5m 45°
Fixture CCT Output	7039 K
CRI	Native: 72.34 With High CRI filter: 90.41
Tm30	Native: 72.06 With High CRI filter: 87.88
TLCI	Native: 48.04 With High CRI filter: 77.5
CQS	Native: 70.44 With High CRI filter: 90.08

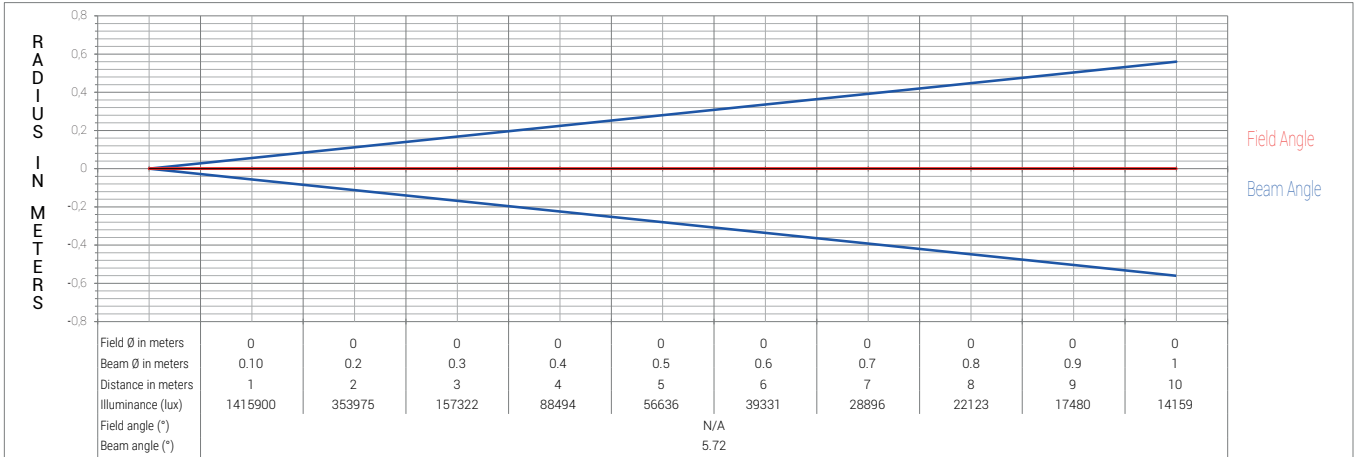


■ CIE1931

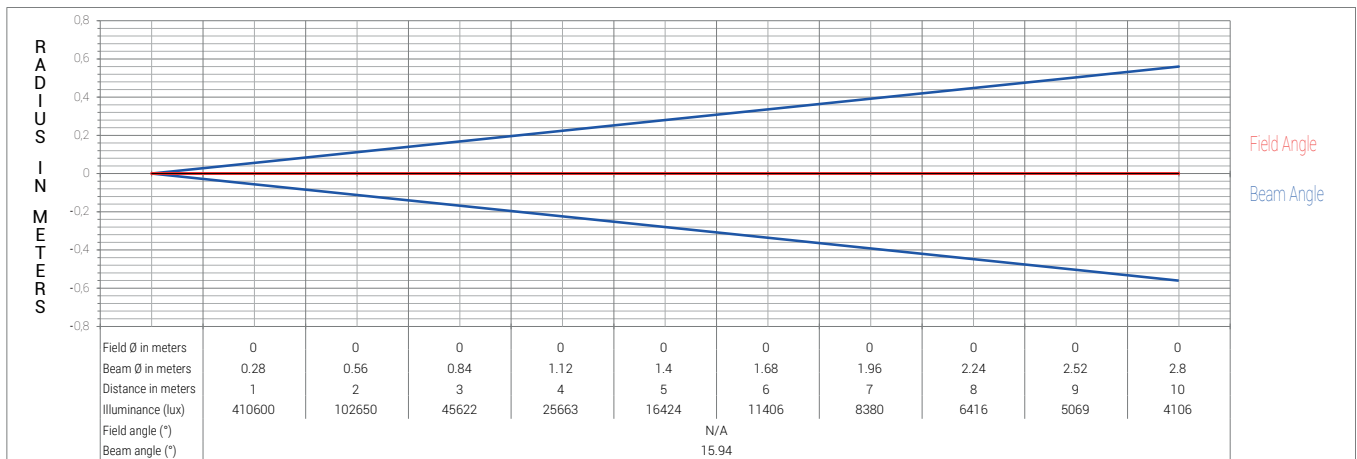


## Photometry

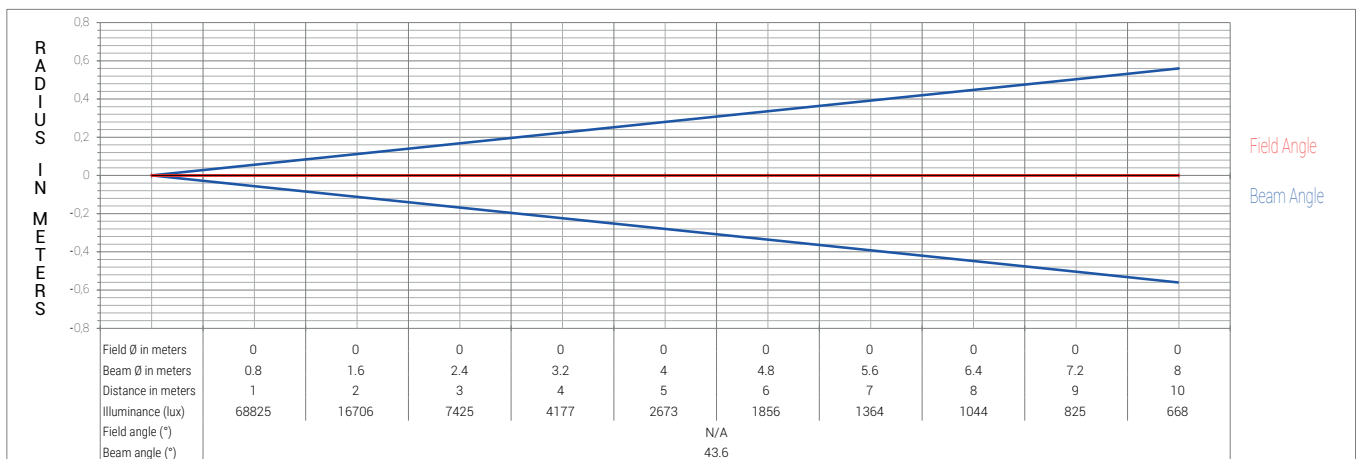
### Narrow Angle



### Medium Angle



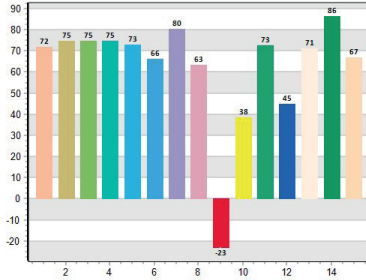
### Wide Angle



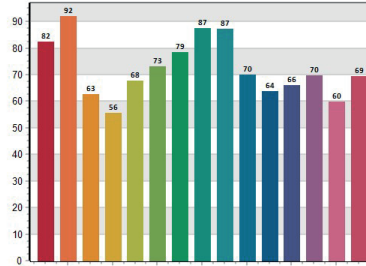
## Colorimetry

### Native

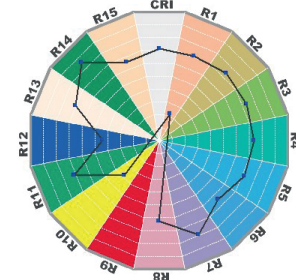
■ CRI: 72,34



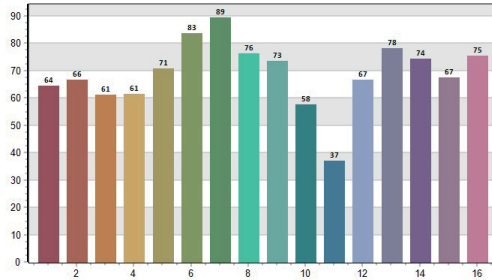
■ CQS: 70,44



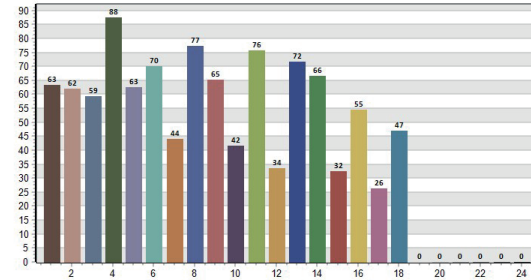
■ CRI-2



■ TM30: 72,06

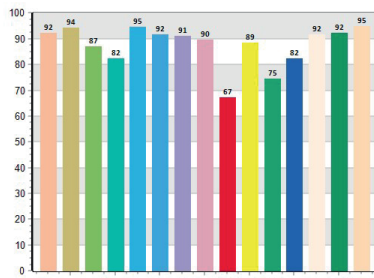


■ TLCI: 48,04

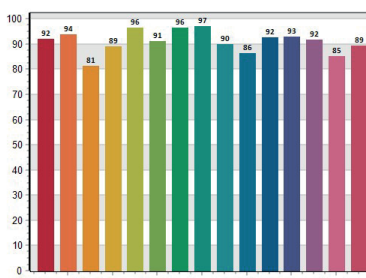


### High IRC Filter

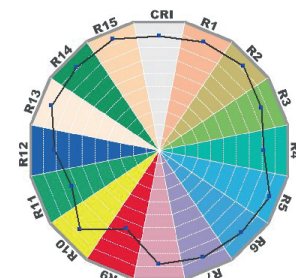
■ CRI: 90,41



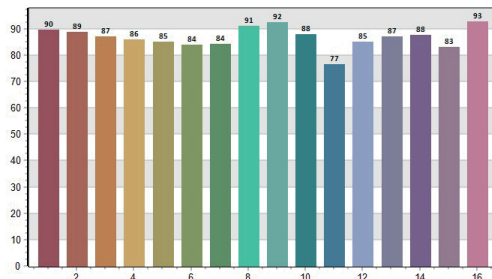
■ CQS: 90,08



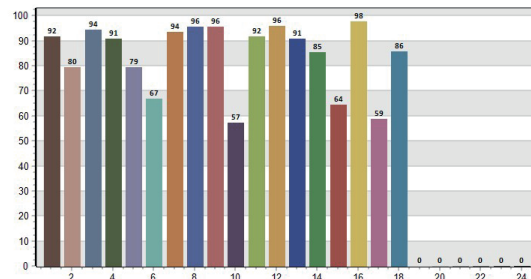
■ CRI-2



■ TM30: 87,98



■ TLCI: 77,50



[Find the complete photometry here :](#)

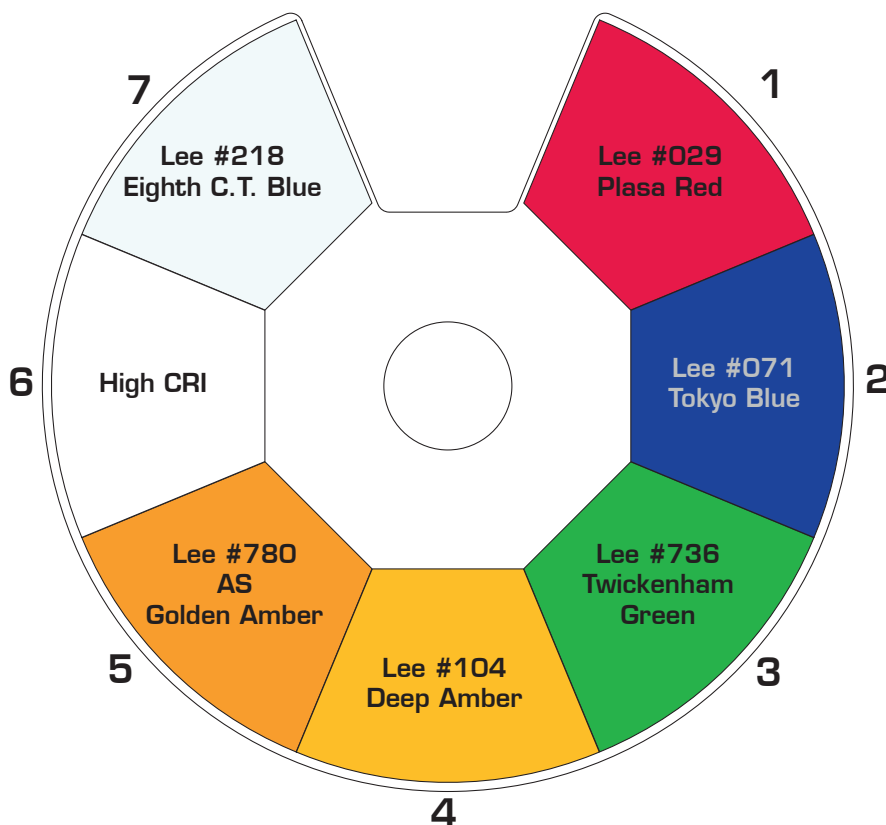


# TECHNICAL DATASHEET

ENZO wet

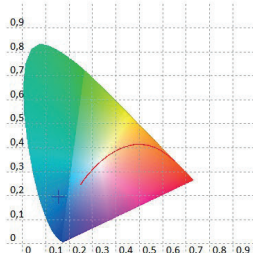
## Color & Filters

Cyan Variable	x: 0.1536 / y: 0.1949
Magenta Variable	x: 0.2105 / y: 0.0424
Yellow Variable	x: 0.4590 / y: 0.5326
CTO Variable	CCT: 4146 K x: 0.4600 / y: 0.4254
Plasa Red (Lee #029)	x: 0.6981 / y: 0.2951
Tokyo Blue (Lee #071)	x: 0.1540 / y: 0.0372
Twickenham Green (Lee #736)	x: 0.1700 / y: 0.7570
Deep Amber (Lee #104)	x: 0.5592 / y: 0.4342
AS Golden Amber (Lee #780)	x: 0.6664 / y: 0.3324
High CRI	CCT: 6688 K x: 0.3130 / y: 0.3067
Eighth CTB (Lee #218)	CCT: 9016 K x: 0.2863 / y: 0.2968



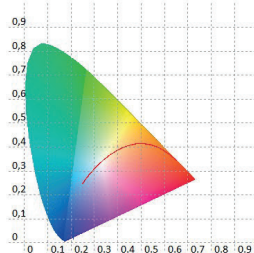
**Cyan @ 100%**

■ CIE1931



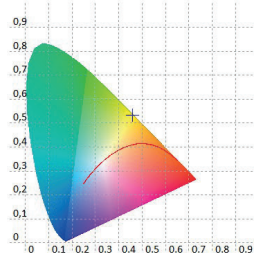
**Magenta @ 100%**

■ CIE1931



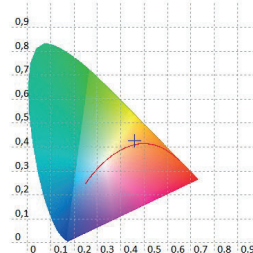
**Yellow @ 100%**

■ CIE1931



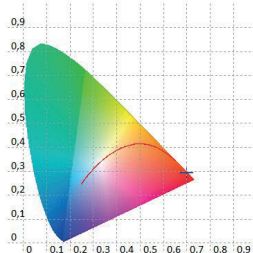
**CTO @ 100%**

■ CIE1931



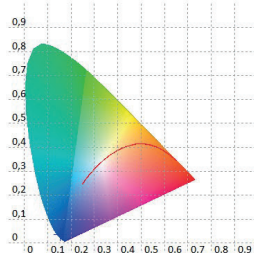
**Plasa Red**

■ CIE1931



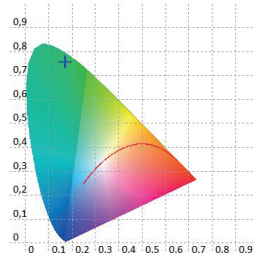
**Tokyo Blue**

■ CIE1931



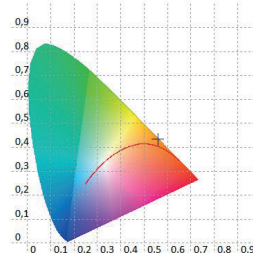
**Twickenham Green**

■ CIE1931



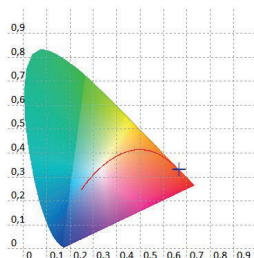
**Deep Amber**

■ CIE1931



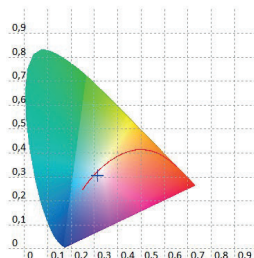
**AS Golden Amber**

■ CIE1931



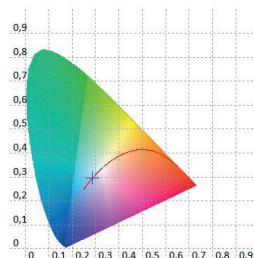
**High CRI**

■ CIE1931



**Eighth C.T. Blue**

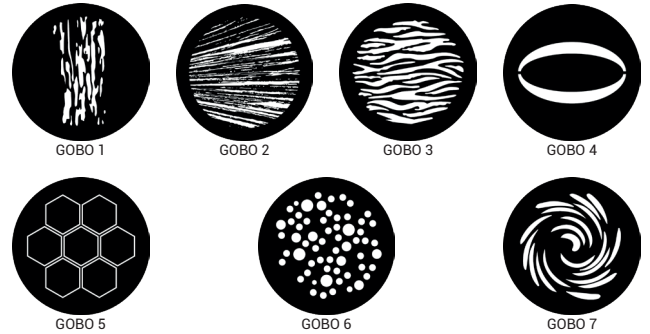
■ CIE1931



# TECHNICAL DATASHEET

ENZO wet

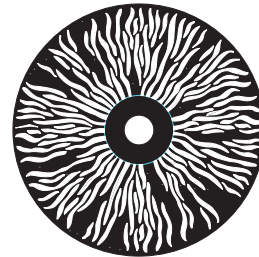
## ROTATING GOBOS



## FIXED GOBOS



## ANIMATION WHEEL



## Gobo

Rotating Gobo Wheel	1
Rotating Gobos	7 Interchangeable (Glass) + Open
Gobo Diameter (Rotating)	23mm
Image Diameter (Rotating)	19mm
Static Gobo Wheel	1
Static Gobo	8 Interchangeable (Glass) + Open
Gobo Thickness (Rotating / Static)	1.1mm 2.4mm on Slot #3

## Effects

Circular Prism	3 facet Index / Continuous Rotation
Linear Prism	5 facet Index / Continuous Rotation
Animation Wheel	Index - CW - CCW
Frost	Heavy Frost Medium Frost
Iris	15 Blades 13% to 100% (Open)
Framing	4 Blades - Full Curtain
Framing Rotation	+/- 45°

## Control

DMX Control	DMX (USITT DMX-512-A) RDM (ANSI/ESTA E1.20)
DMX Modes	2 Enzo Wet Modes + 4 Enzo Compatible Modes
Enzo Wet Channel Count	Standard - 40 Enhanced - 54
Enzo Compatible Channel Count	Basic - 36 Standard - 39 Extended - 45 Enhanced - 53
Network	ArtNet - sACN
Local Control	Colour LCD panel Navigation buttons
Wireless DMX	WDMX Compatible
RDM Functions	Yes

## Noise Level

Fan Mode Auto	45dB @ 1m
Fan Mode High	47dB @ 1m
Fan Mode Quiet	40dB @ 1m

## Connectors

Power	PowerCoN True 1 (In/Out)
DMX	XLR 5 Pin (In/Out)
Network	RJ45 (In/Out)
USB	Upgrade purpose

## Thermal

Cooling System	Forced
Cooling Modes	Auto - High - Quiet
Max Ambient Temperature (Ta Max)	45°C
Min Ambient Temperature (Ta Min)	-10°C
Max Surface Temperature, steady state, at Ta 40°	65°C
Total Heat Dissipation (Calculated +/- 10%)	3078 BTU/h - 900W@240V
Heat Dissipation (standby) (Calculated +/- 10%)	279 BTU/h - 82W@240V

# TECHNICAL DATASHEET

ENZO wet

## Material

Housing Die Cast Aluminium

## Physical

### Fixture

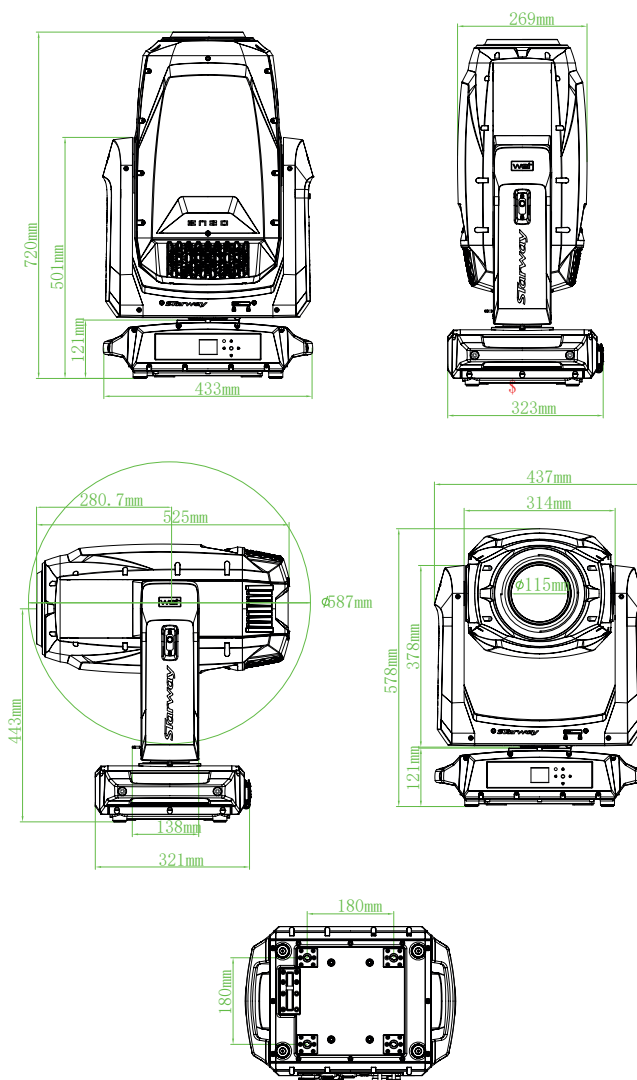
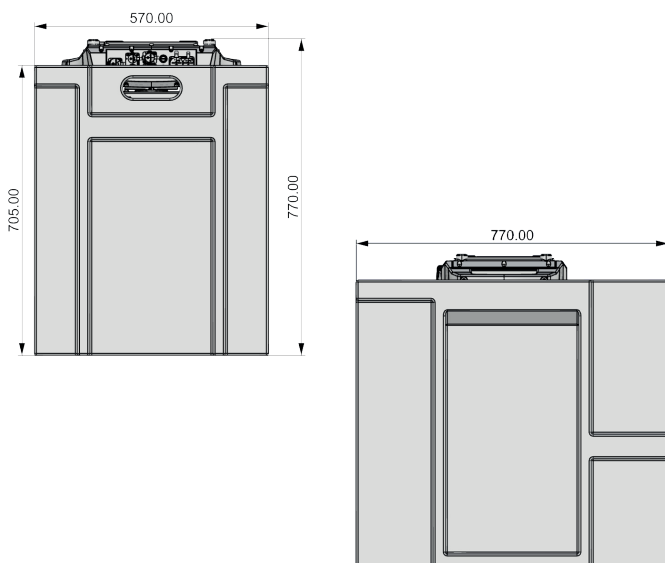
LxWxH 437mm x 323mm x 720mm  
Weight 35.5 Kg

### Carton Box

LxWxH 800mm x 615mm x 890mm  
Weight 61.7 Kg

### Molded Foam Insert

LxWxH (Without Fixture) 770mm x 570mm x 705mm  
Weight (Without Fixture) 18.2 Kg  
LxWxH (With Fixture) 770mm x 570mm x 770mm  
Weight (With Fixture & Acc) 53.7 Kg



## Download

[Manual](#)



[DMX Map](#)



[All download](#)



---

# *Starway*

22 Rue Édouard Buffard  
77144 Montevrain  
**France**

[starway.eu](http://starway.eu)

---