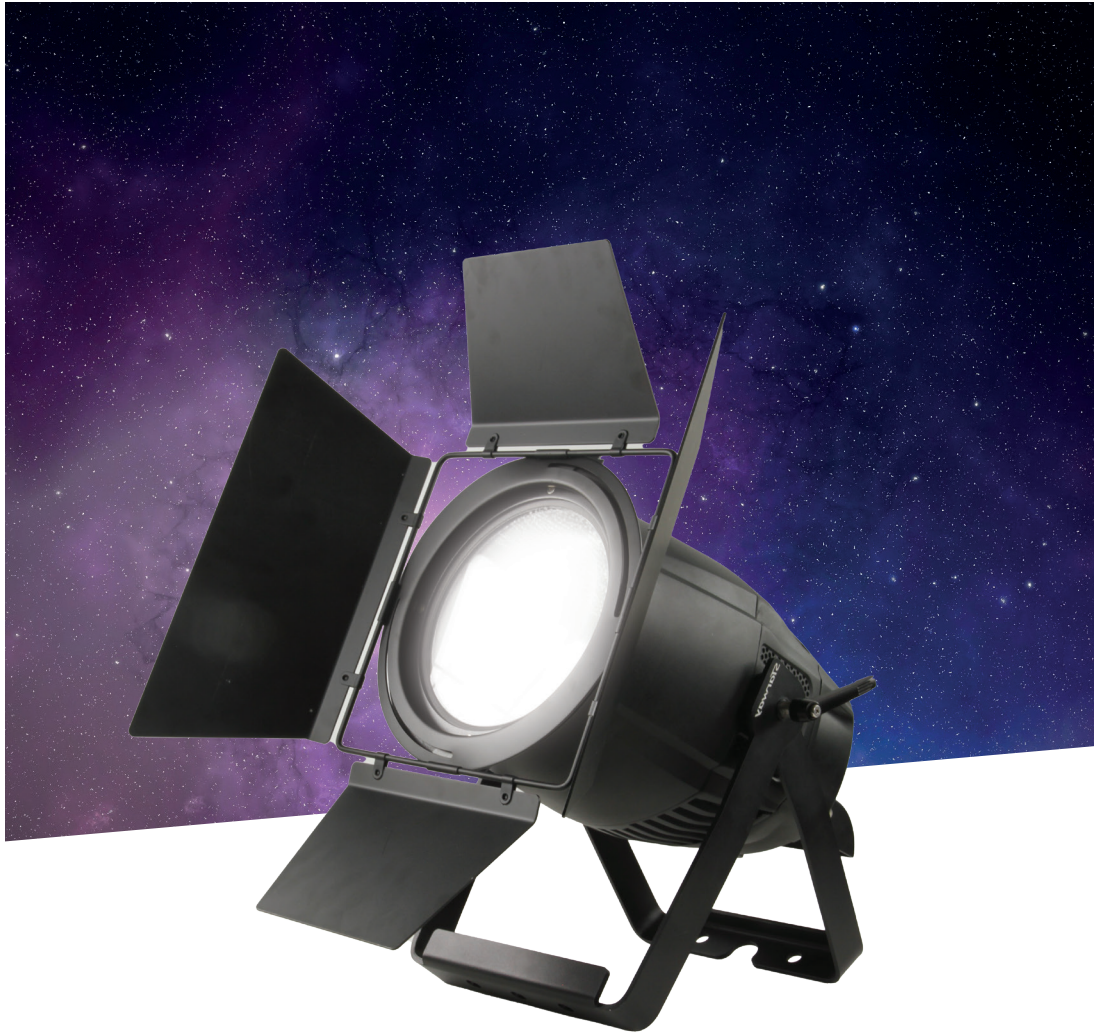


PHOTOMETRY

ParKolor 200DW



The Swiss army knife of white LED projectors. The **ParKolor 200DW** is equipped with a 400W CW + WW COB LED and allows a variation of white, without derating in regulated modes, from 2,700°K to 6,500°K with an exceptional CRI of 97 for a maximum flux of 18000 lumen. **ParKolor 200DW** has a motorized zoom range from 10° to 60°. Its design, in die-cast aluminum, designed for maximum heat exchange and the addition of 2 fans allow permanent operation without loss of flux at the power of 250W. A "Silent" mode without ventilation is also available.

Thanks to its IP65 rating and its removable connector protection cap, this projector allows versatile use both indoors and outdoors.



T *able of Contents*

Specifications	3
Power Regulated Mode	4
Photometric Data Narrow Zoom.....	5
Photometric Data Medium Zoom	6
Photometric Data Wide Zoom.....	7
Cool White + Warm White @100% Spectrum Test Report	8
Cool White @100% Spectrum Test Report	10
Warm White @100% Spectrum Test Report.....	12
3200°K Spectrum Test Report	14
4000°K Spectrum Test Report	16
4500°K Spectrum Test Report	18
5600°K Spectrum Test Report	20
6500°K Spectrum Test Report	22

Source

Engine	COB Cool White+Warm White
LED Watts	400W
Engine CCT	Dynamic White
Engine Life (L70)	> 55000 H
Refresh Rate	1200Hz
Dimming	Electronic - 16 bits
Dimming Curves	Linear, Square, Inv Square, S-curve
Dimming Modes	Dim0 (0s), Dim1 (0.25s), Dim2 (0.5s), Dim3 (0.75s), Dim4 (1s)
Strobe Speed	1 - 20 Hz
Strobe Modes	Standard, Sync Random, Random

Performances

Fixture Luminous Flux (Max)	18361 lm
Fixture Illuminance	Narrow: 9100 lux@5m 10° Medium: 3210 lux@5m 25° Wide: 1209 lux@5m 60°
Fixture CCT Output	≈2700 - ≈6500 K
CRI	@6500K: 94.64 @2700K: 97.74
Tm30	@6500K: 93.01 @2700K: 96.34
TLCI	@6500K: 98.13 @2700K: 96.91
CQS	@6500K: 94.66 @2700K: 94.50

Optical

Lens Diameter	178 mm
Zoom Range	10° - 62°
Zoom Ratio	6.2 :1

Colour System

Colour System	Cool White + Warm White
Control	8 bits / 16 bits

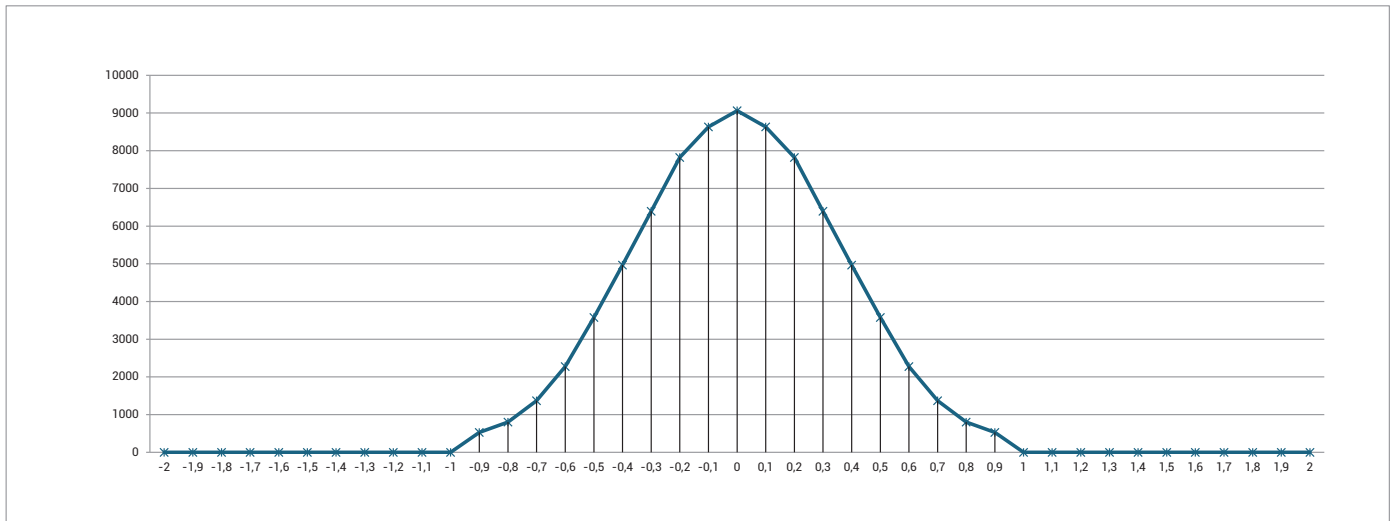
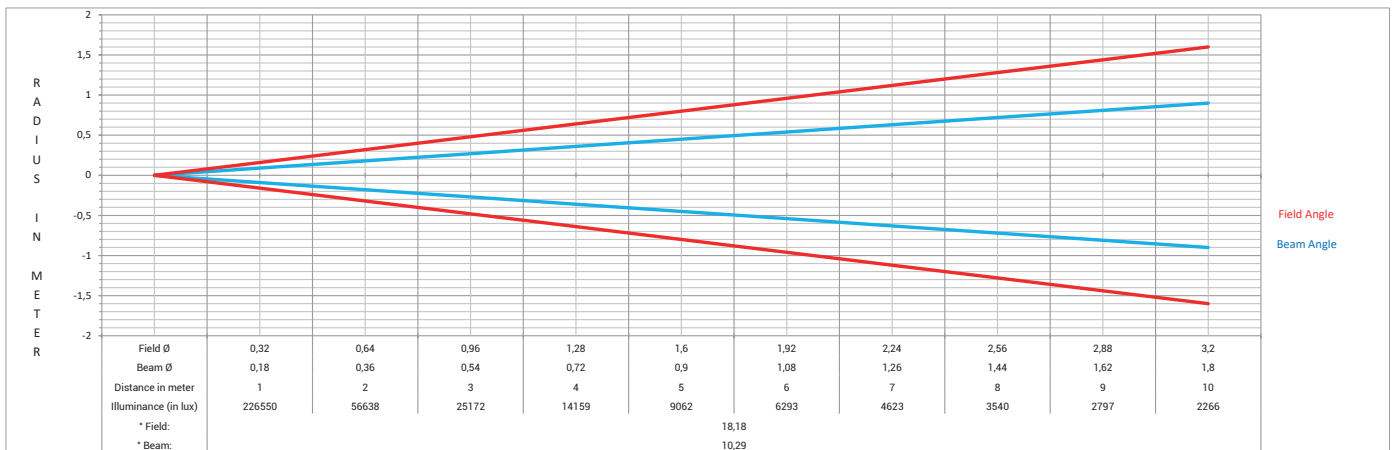
Power Regulated Mode

POWER MEASUREMENT ACCORDING TO COLOR TEMPERATURE											
	COLOR TEMP	2700K	3000K	3200K	3500K	4000K	4500K	5000K	5600K	6000K	6500K
REGULATED POWER ON	ALL FAN MODES	206W	236W	258W	300W	390W	331W	243W	234W	214W	202W
REGULATED POWER ON	FAN AUTO/HIGH	206W	236W	243W	243W	250W	244W	243W	236W	213W	202W
	FAN QUIET	204W	232W	232W	232W	235W	233W	232W	232W	214W	202W
	FAN OFF	170W	170W	169W	169W	172W	169W	169W	168W	168W	168W

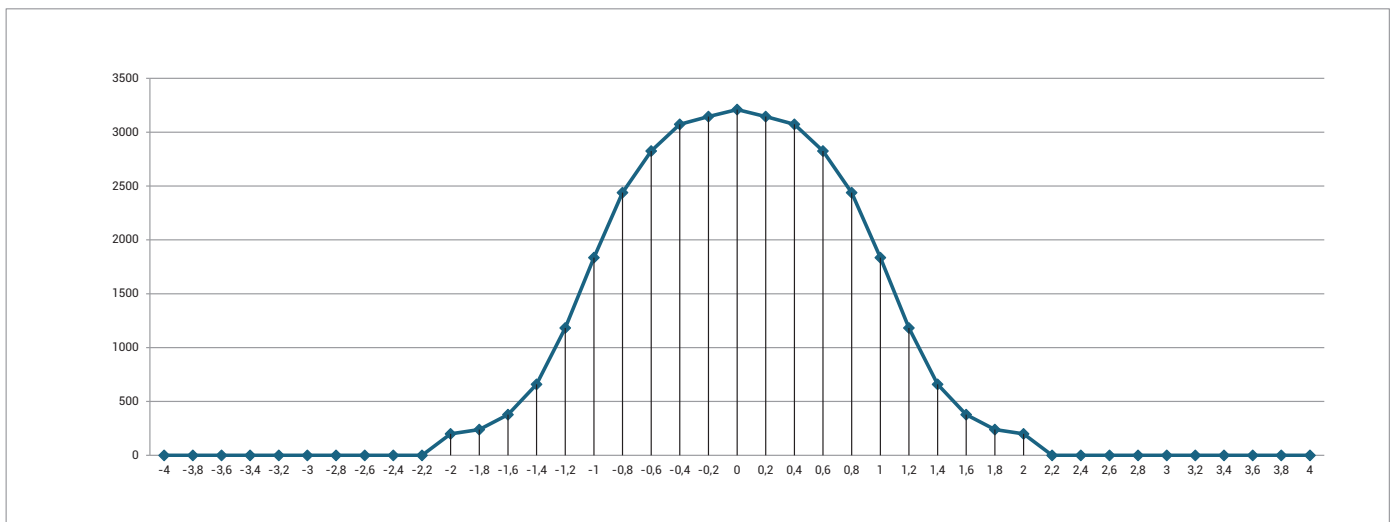
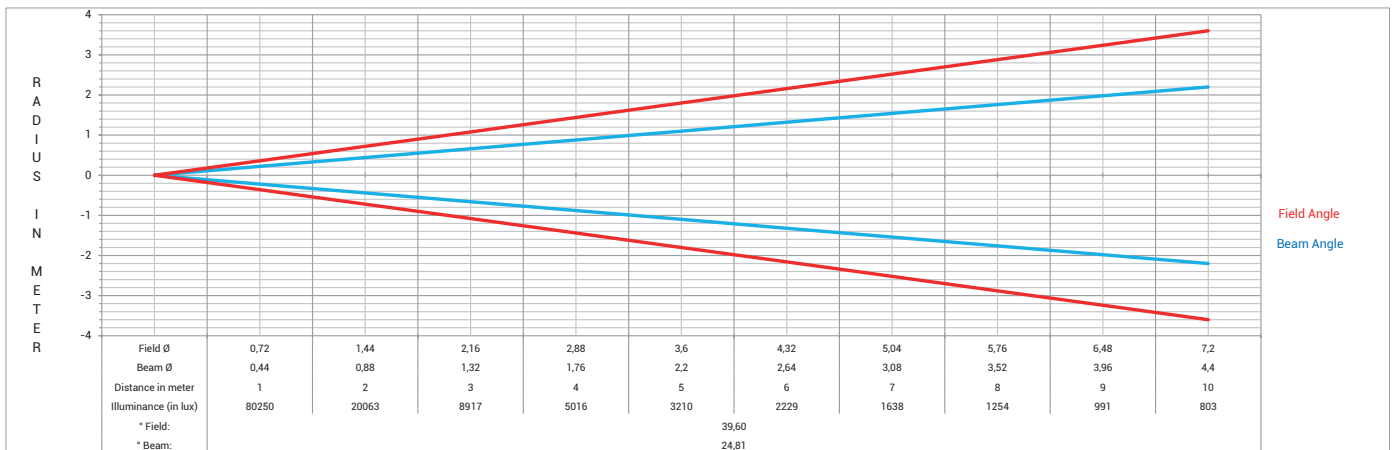
COLOR RENDERING INDEX											
COLOR TEMPERATURE	2700K	3000K	3200K	3500K	4000K	4500K	5000K	5600K	6000K	6500K	
CRI	97.7	97.9	97.7	97.6	97.7	98.2	97.7	97.1	95.2	94.6	

PHOTOMETRIC MEASUREMENTS			REGULATED POWER OFF		REGULATED POWER ON					
			ALL FAN MODE		FAN MODE AUTO/HIGH		FAN MODE QUIET		SILENT MODE FAN OFF	
	BEAM ANGLE	FIELD ANGLE	LUX	LUMEN	LUX	LUMEN	LUX	LUMEN	LUX	LUMEN
NARROW ZOOM	10°	18°	9062	7330	5699	5300	5375	4400	3890	3541
MEDIUM ZOOM	24°	39°	3210	14000	2072	9345	1941	8600	1404	6100
WIDE ZOOM	47°	61°	1209	18000	768	11500	729	11000	527	8000

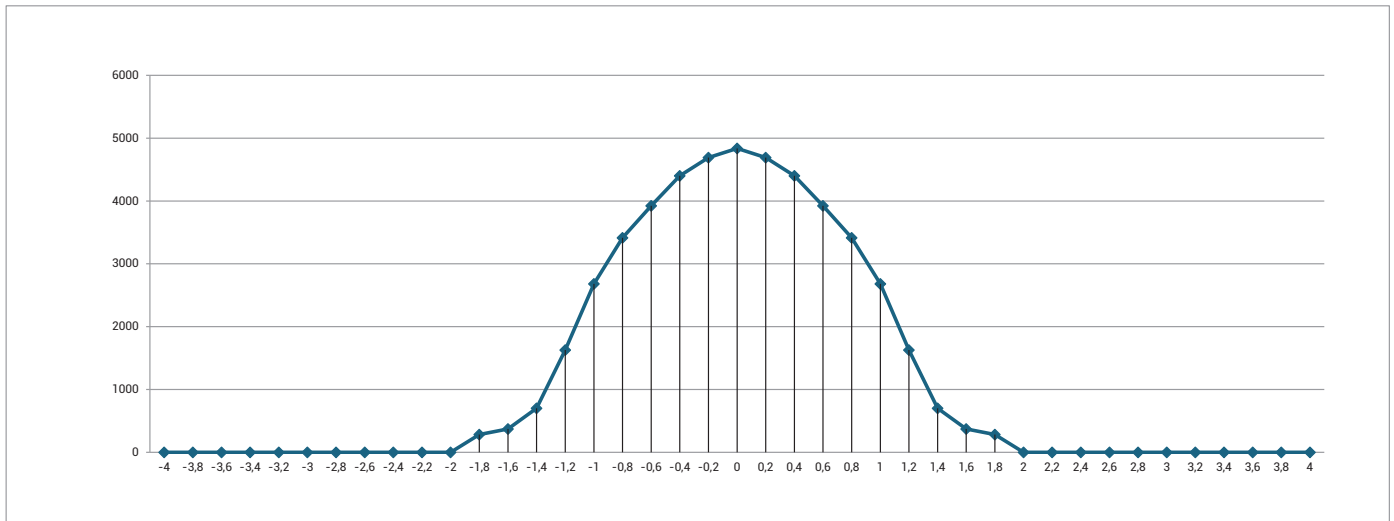
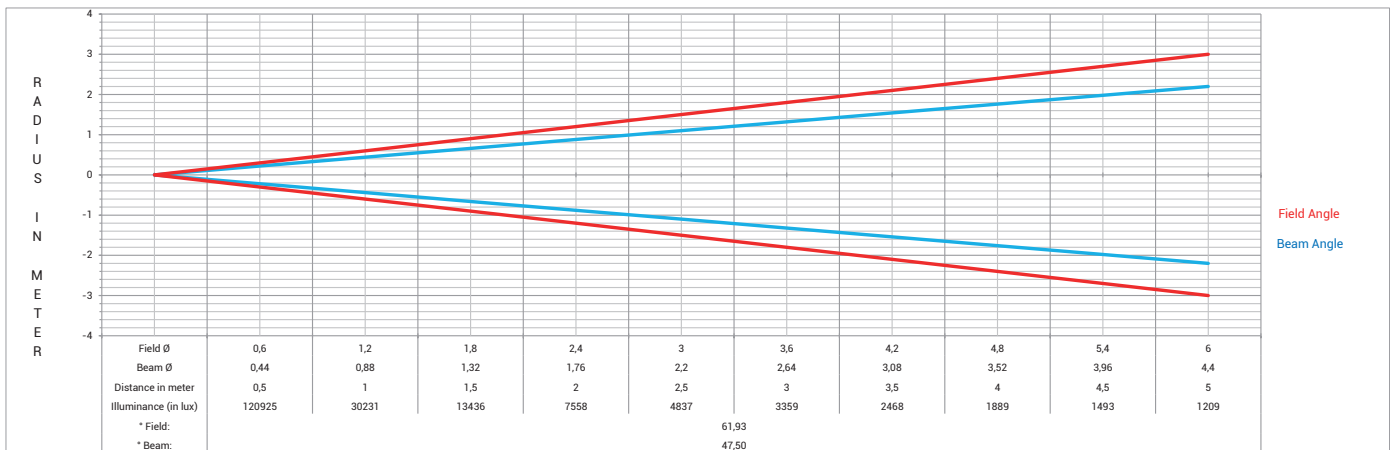
Photometric Data - Narrow Zoom



Photometric Data - Medium Zoom



Photometric Data - Wide Zoom



Cool White + Warm White @100% Spectrum Test Report

Medium Zoom @ 5m



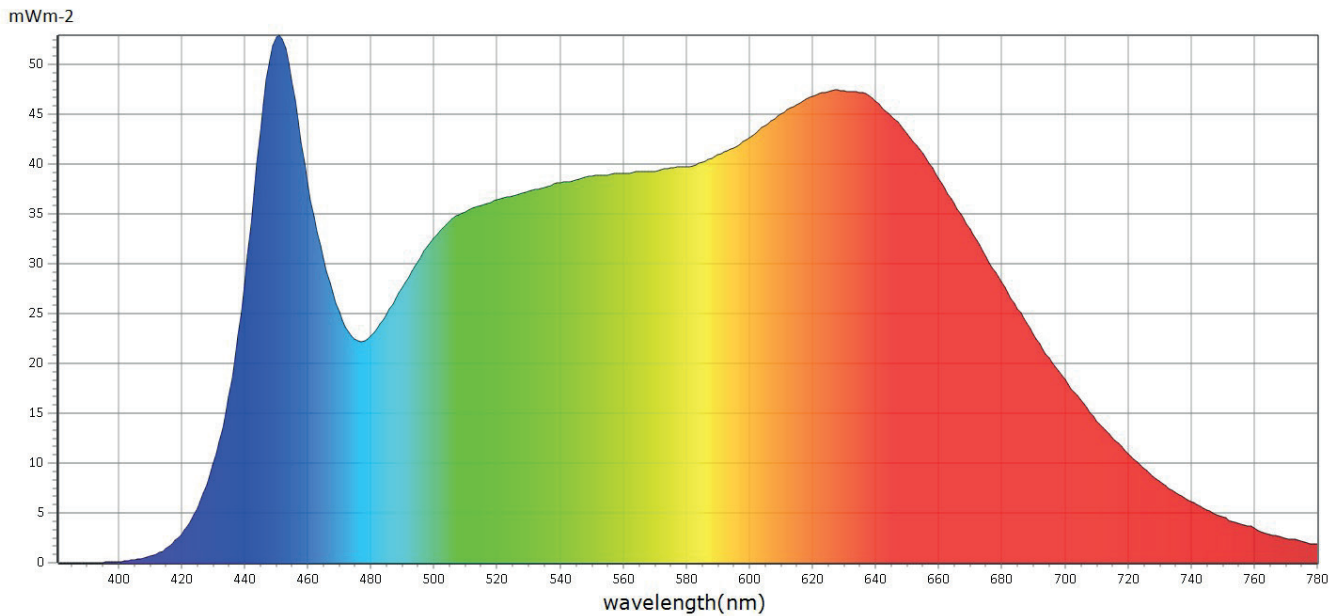
Information

User :	Measure Time :12:15:49
Model NO. : MK350S PREMIUM	Light Source :
Memo :	
Zoom 127 - Fan Auto - Regulation OFF - CW+WW	

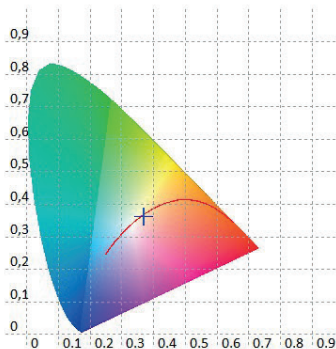
BASIC

CRI	: 97,7
X	: 0,3689
Y	: 0,3620
CCT	: 4230
LUX	: 2849

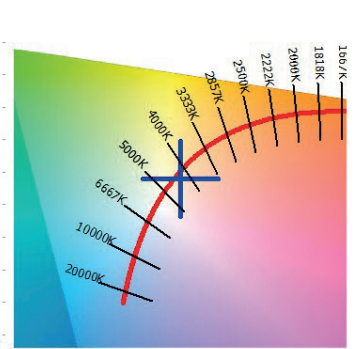
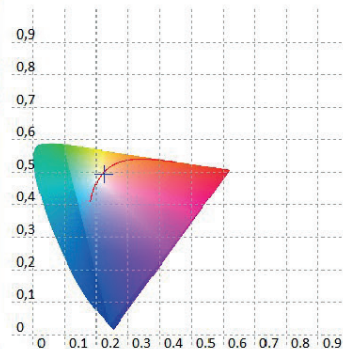
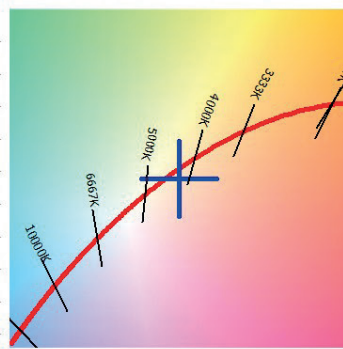
Spectrum



CIE1931



CIE1976



Cool White + Warm White @100% Spectrum Test Report

Medium Zoom @ 5m



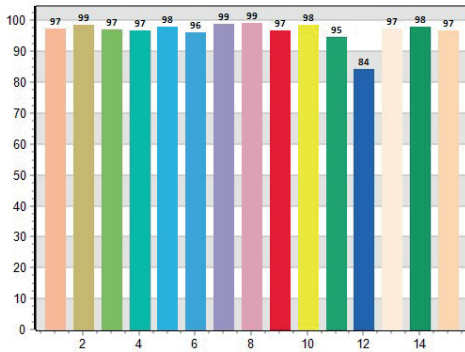
Information

User :	Measure Time :12:15:49
Model NO. : MK350S PREMIUM	Light Source :
Memo :	
Zoom 127 - Fan Auto - Regulation OFF - CW+WW	

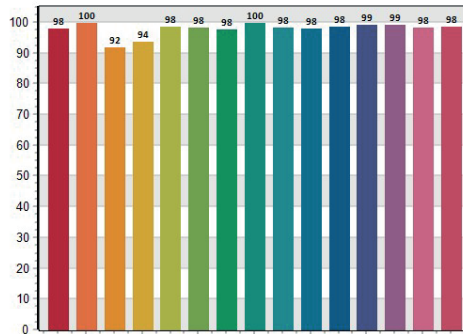
BASIC

CRI	: 97,7
X	: 0,3689
Y	: 0,3620
CCT	: 4230
LUX	: 2849

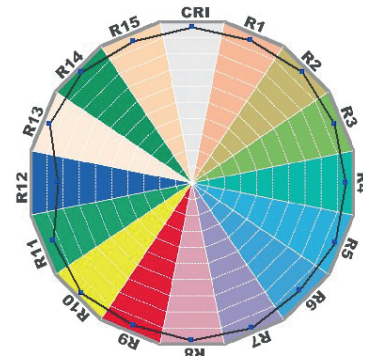
CRI: 97,74



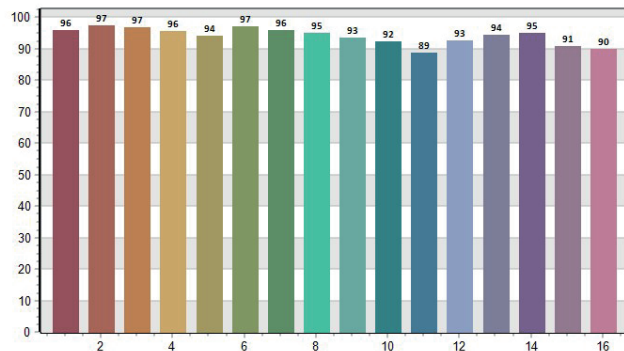
CQS: 96,89



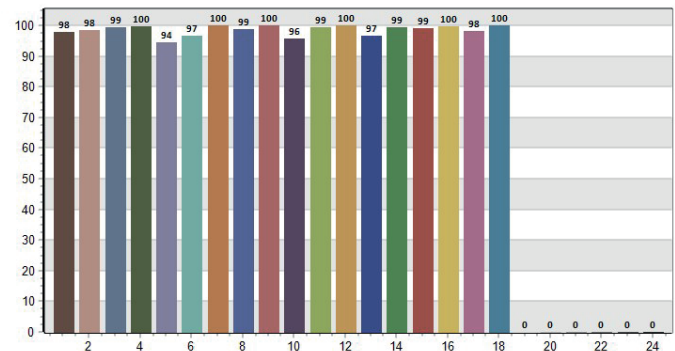
CRI-2



TM30: 94,64



TLCI: 97,96



CRI values, only R1-R8 are used to calculate final CRI

R1	R2	R3	R4	R5	R6	R7	R8	R9	R10	R11	R12	R13	R14	R15
97,2	98,7	97,2	96,8	97,9	96,0	98,9	99,2	96,8	98,4	94,5	84,1	97,3	97,9	96,7

TM30 C values, 16 binned values out of total of 99 C values

C1	C2	C3	C4	C5	C6	C7	C8	C9	C10	C11	C12	C13	C14	C15	C16
95,7	97,3	96,8	95,6	94,0	96,9	95,9	94,9	93,4	92,2	88,7	92,7	94,4	95,0	90,9	89,8

CQS Q values

Q1	Q2	Q3	Q4	Q5	Q6	Q7	Q8	Q9	Q10	Q11	Q12	Q13	Q14	Q15
97,9	99,7	91,7	93,6	98,5	98,0	97,5	99,6	98,2	97,9	98,4	98,9	99,0	98,2	98,3

Cool White @100% Spectrum Test Report

Medium Zoom @ 5m



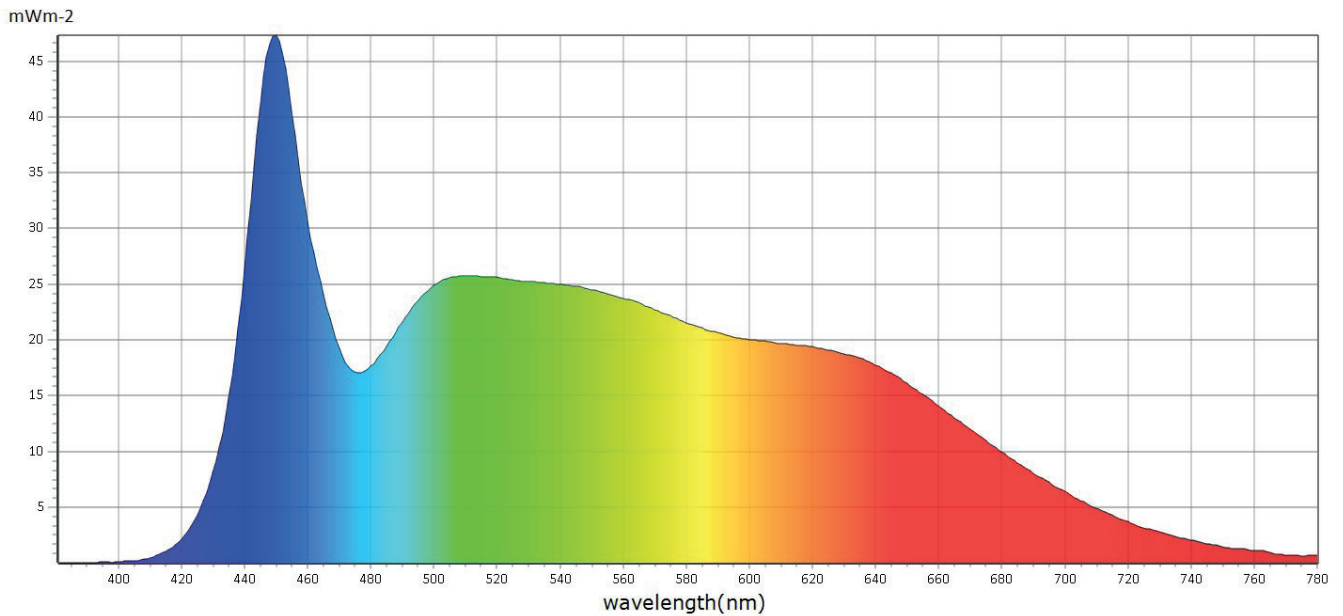
Information

User :	Measure Time :12:15:44
Model NO. : MK350S PREMIUM	Light Source :
Memo :	
Zoom 127 - Fan Auto - Regulation OFF - CW	

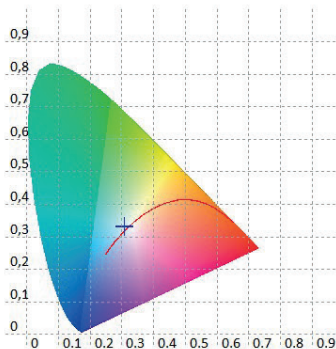
BASIC

CRI	: 93,9
X	: 0,3092
Y	: 0,3325
CCT	: 6663
LUX	: 1656

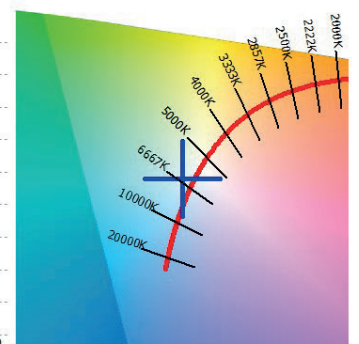
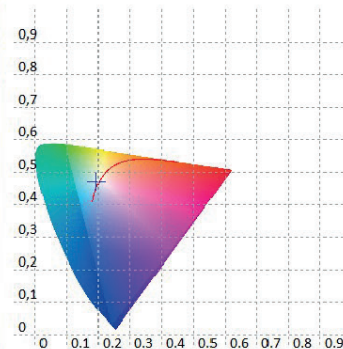
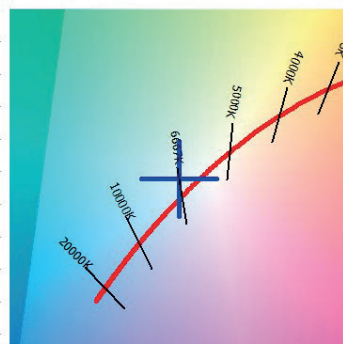
Spectrum



CIE1931



CIE1976



Cool White @100% Spectrum Test Report

Medium Zoom @ 5m



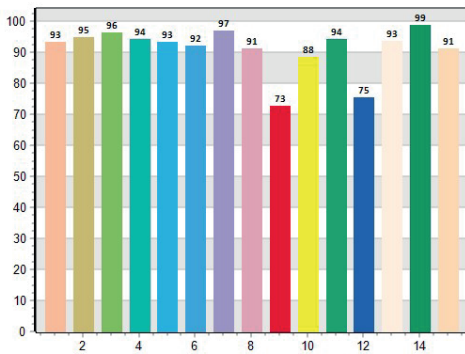
Information

User :	Measure Time :12:15:44
Model NO. : MK350S PREMIUM	Light Source :
Memo :	
Zoom 127 - Fan Auto - Regulation OFF - CW	

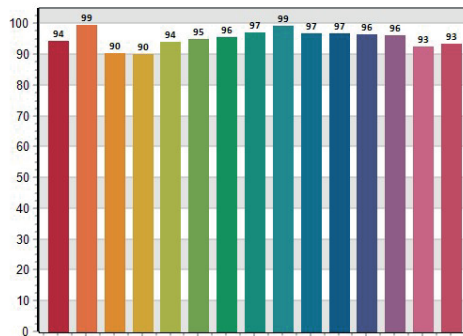
BASIC

CRI	: 93,9
X	: 0,3092
Y	: 0,3325
CCT	: 6663
LUX	: 1656

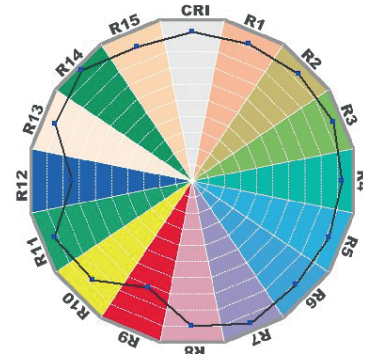
CRI: 93,93



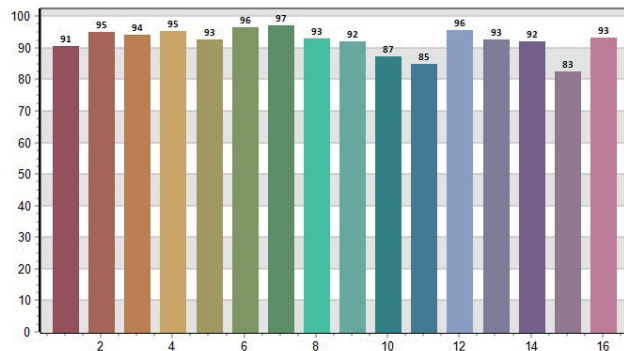
CQS: 94,43



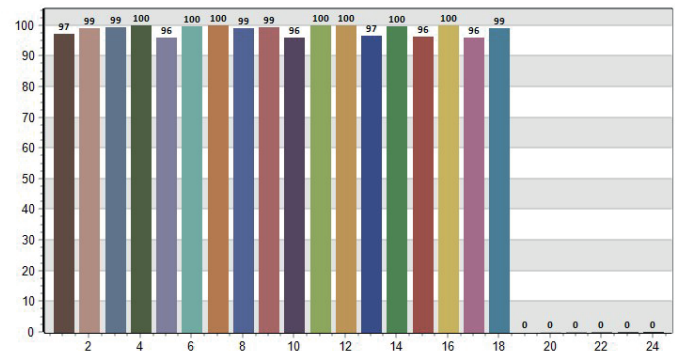
CRI-2



TM30: 92,85



TLCI: 97,96



CRI values, only R1-R8 are used to calculate final CRI

R1	R2	R3	R4	R5	R6	R7	R8	R9	R10	R11	R12	R13	R14	R15
93,1	94,7	96,1	94,2	93,2	92,1	96,9	91,1	72,6	88,3	94,1	75,3	93,4	98,7	91,0

TM30 C values, 16 binned values out of total of 99 C values

C1	C2	C3	C4	C5	C6	C7	C8	C9	C10	C11	C12	C13	C14	C15	C16
90,6	94,9	94,1	95,1	92,7	96,5	97,1	93,0	92,0	87,4	84,7	95,5	92,7	92,1	82,6	93,3

CQS Q values

Q1	Q2	Q3	Q4	Q5	Q6	Q7	Q8	Q9	Q10	Q11	Q12	Q13	Q14	Q15
94,2	99,5	90,3	90,1	94,0	94,9	95,6	97,1	99,2	96,7	96,7	96,5	96,2	92,5	93,4

Warm White @100% Spectrum Test Report

Medium Zoom @ 5m



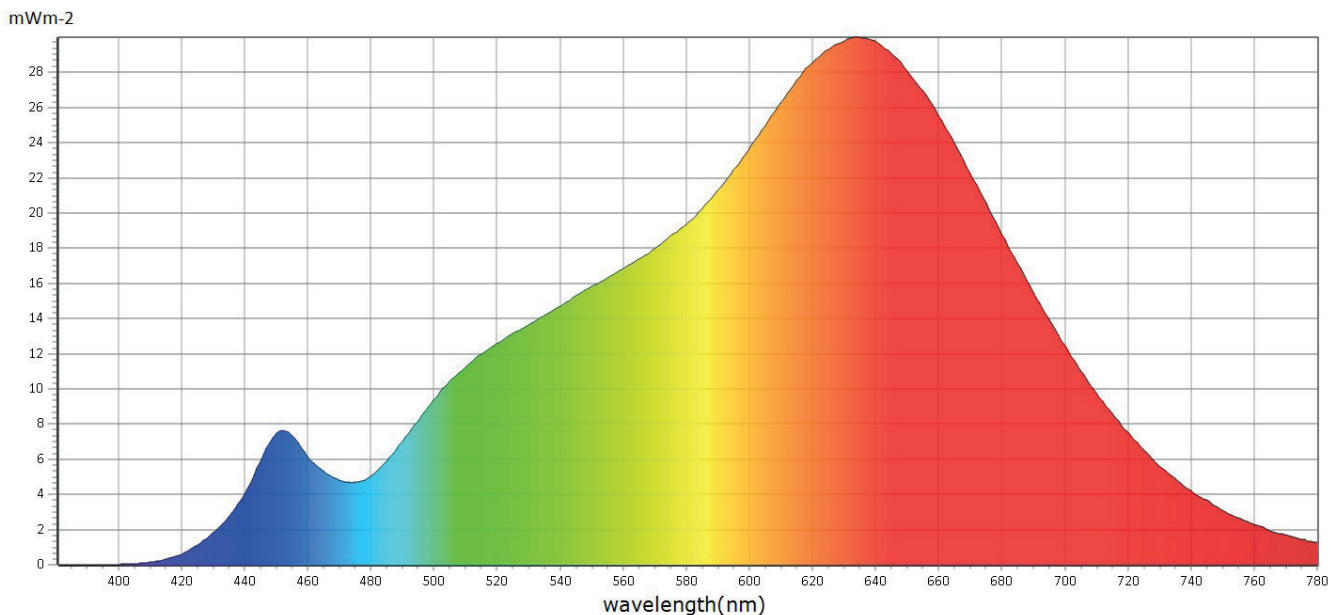
Information

User :	Measure Time :12:15:52
Model NO. : MK350S PREMIUM	Light Source :
Memo :	
Zoom 127 - Fan Auto - Regulation OFF - WW	

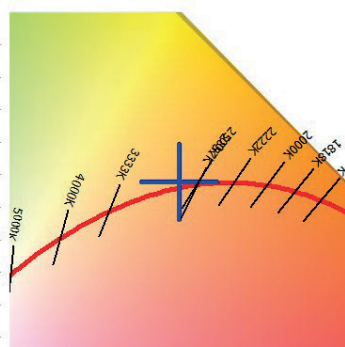
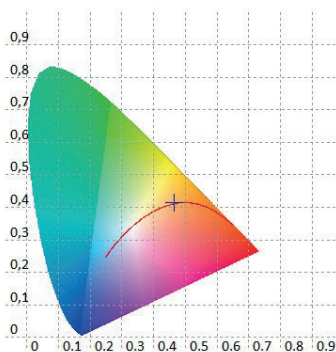
BASIC

CRI	: 97,7
X	: 0,4643
Y	: 0,4154
CCT	: 2676
LUX	: 1289

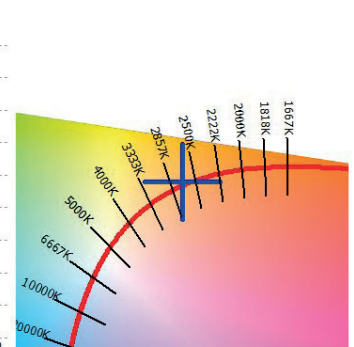
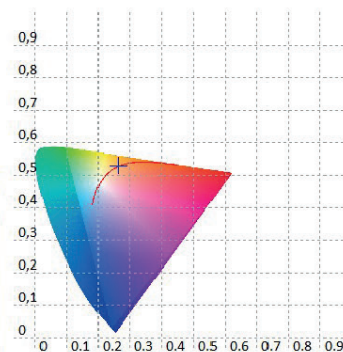
Spectrum



CIE1931



CIE1976



Warm White @100% Spectrum Test Report

Medium Zoom @ 5m



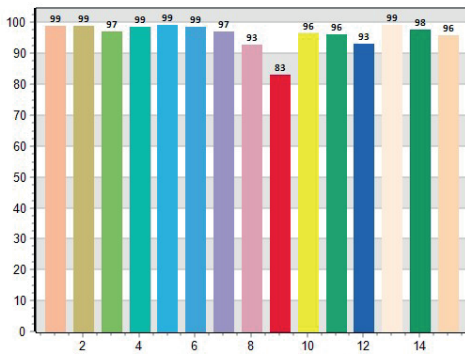
Information

User :	Measure Time :12:15:52
Model NO. : MK350S PREMIUM	Light Source :
Memo :	
Zoom 127 - Fan Auto - Regulation OFF - WW	

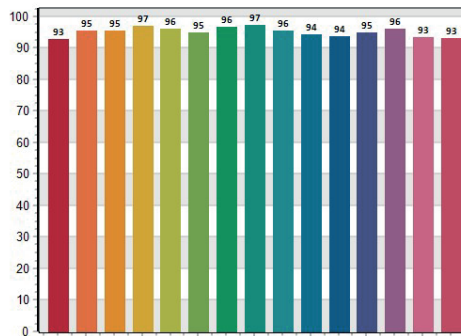
BASIC

CRI	: 97,7
X	: 0,4643
Y	: 0,4154
CCT	: 2676
LUX	: 1289

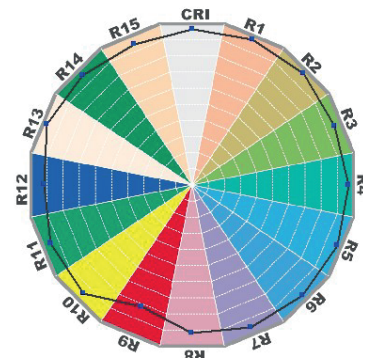
CRI: 97,74



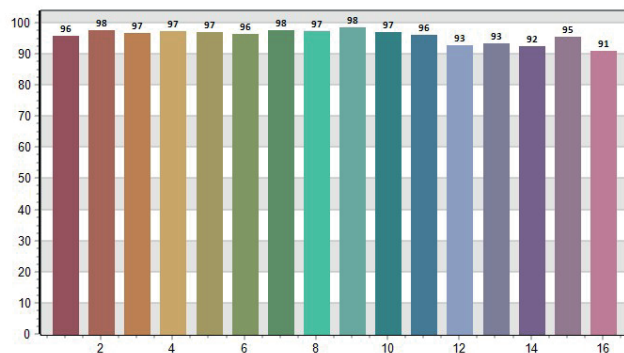
CQS: 94,68



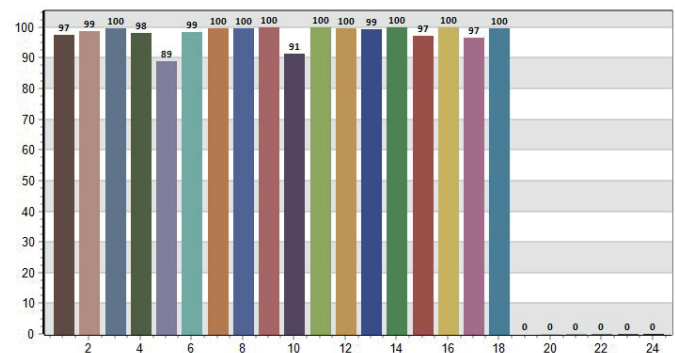
CRI-2



TM30: 96,35



TLCI: 96,78



CRI values, only R1-R8 are used to calculate final CRI

R1	R2	R3	R4	R5	R6	R7	R8	R9	R10	R11	R12	R13	R14	R15
99,1	98,8	97,2	98,7	99,2	98,7	97,2	93,0	83,2	96,5	96,1	93,3	99,2	97,6	95,8

TM30 C values, 16 binned values out of total of 99 C values

C1	C2	C3	C4	C5	C6	C7	C8	C9	C10	C11	C12	C13	C14	C15	C16
95,8	97,6	96,7	97,2	96,9	96,3	97,7	97,3	98,4	97,0	96,0	92,8	93,4	92,4	95,3	91,0

CQS Q values

Q1	Q2	Q3	Q4	Q5	Q6	Q7	Q8	Q9	Q10	Q11	Q12	Q13	Q14	Q15
92,8	95,5	95,3	96,9	95,9	94,9	96,5	97,2	95,5	94,1	93,7	94,7	96,1	93,2	93,1

3200° K - Spectrum Test Report

Medium Zoom @ 5m



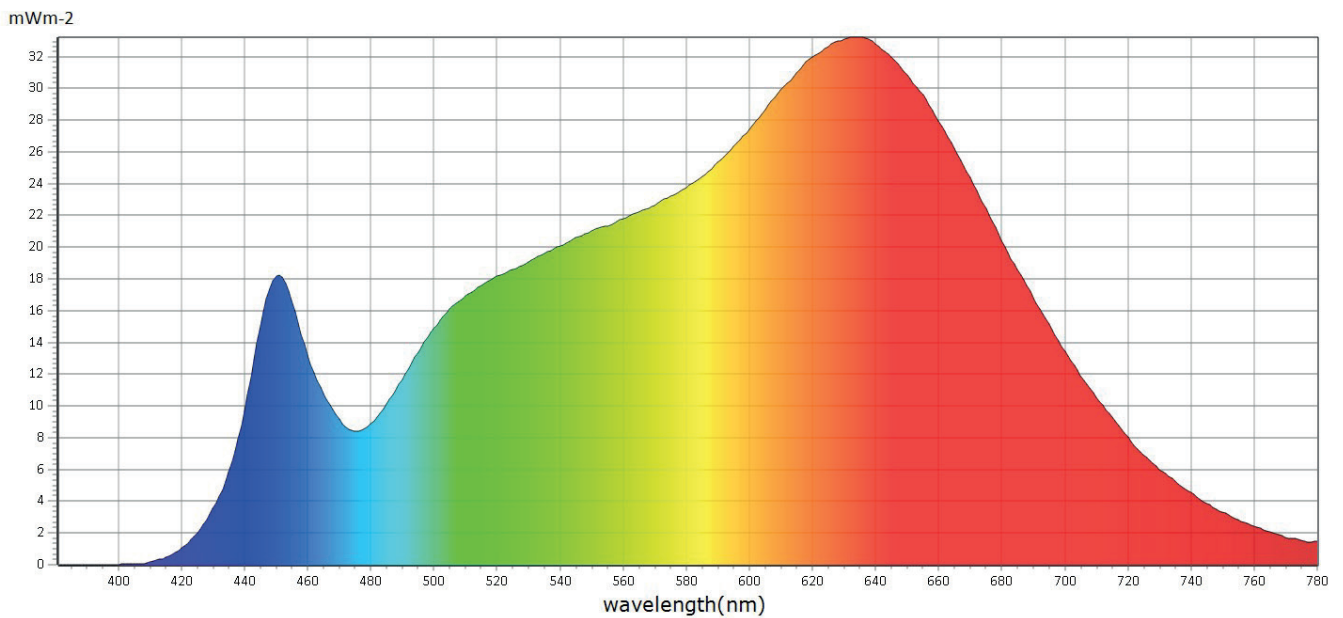
Information

User :	Measure Time :14:42:05
Model NO. : MK350S PREMIUM	Light Source :
Memo :	
3200	

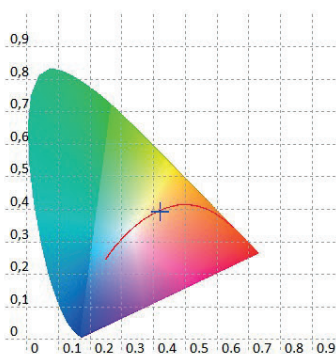
BASIC

CRI	: 97,7
X	: 0,4211
Y	: 0,3931
CCT	: 3193
LUX	: 1630

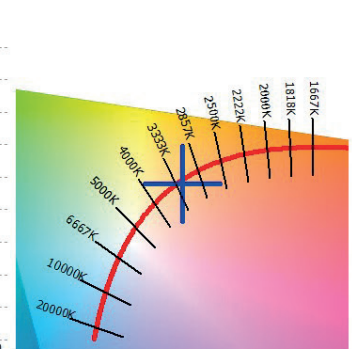
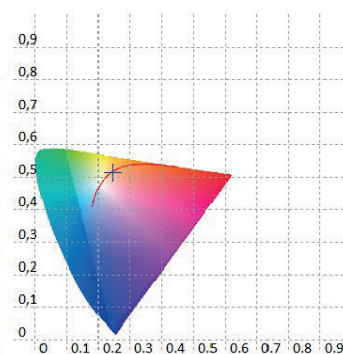
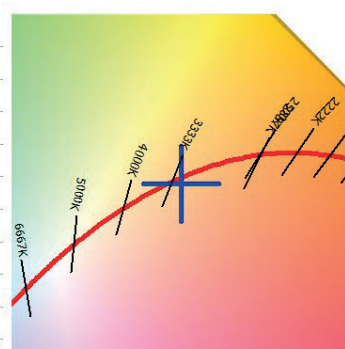
Spectrum



CIE1931



CIE1976



3200° K - Spectrum Test Report

Medium Zoom @ 5m



Information

BASIC

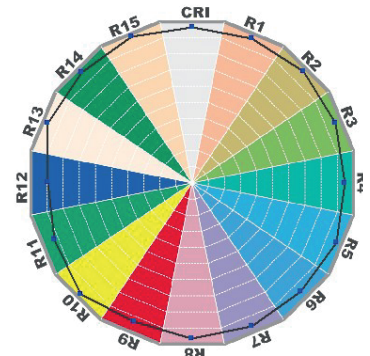
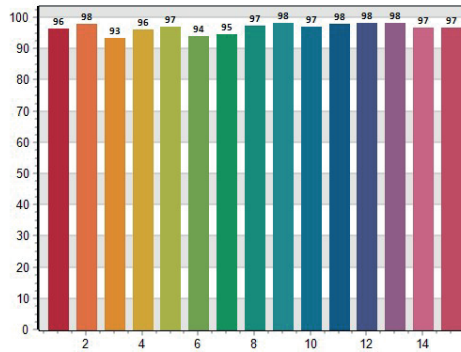
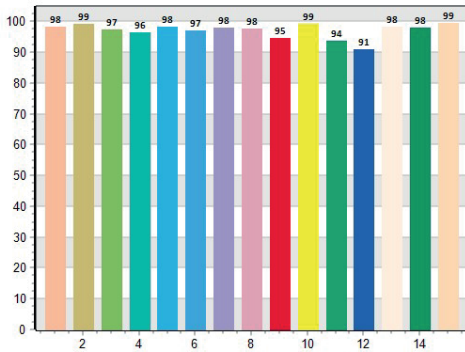
User :	Measure Time :14:42:05
Model NO. : MK350S PREMIUM	Light Source :
Memo :	
3200	

CRI	: 97,7
X	: 0,4211
Y	: 0,3931
CCT	: 3193
LUX	: 1630

CRI: 97,73

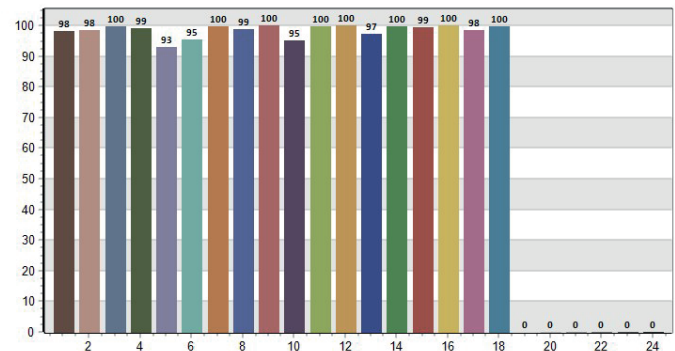
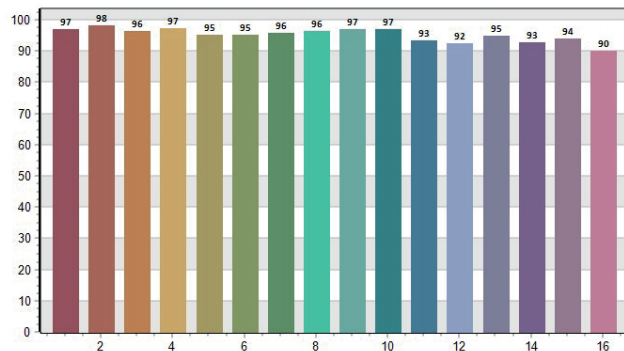
CQS: 96,17

CRI-2



TM30: 95,93

TLCI: 97,69



CRI values, only R1-R8 are used to calculate final CRI

R1	R2	R3	R4	R5	R6	R7	R8	R9	R10	R11	R12	R13	R14	R15
98,3	99,2	97,4	96,3	98,3	96,9	97,8	97,6	94,7	99,1	93,8	91,0	98,2	97,9	99,5

TM30 C values, 16 binned values out of total of 99 C values

C1	C2	C3	C4	C5	C6	C7	C8	C9	C10	C11	C12	C13	C14	C15	C16
97,1	98,2	96,3	97,4	95,3	95,1	95,8	96,4	96,9	96,9	93,5	92,3	95,0	92,6	94,0	89,9

CQS Q values

Q1	Q2	Q3	Q4	Q5	Q6	Q7	Q8	Q9	Q10	Q11	Q12	Q13	Q14	Q15
96,3	98,0	93,3	96,1	97,1	94,0	94,7	97,3	98,1	97,0	97,9	98,2	98,1	96,7	96,7

4000° K - Spectrum Test Report

Medium Zoom @ 5m



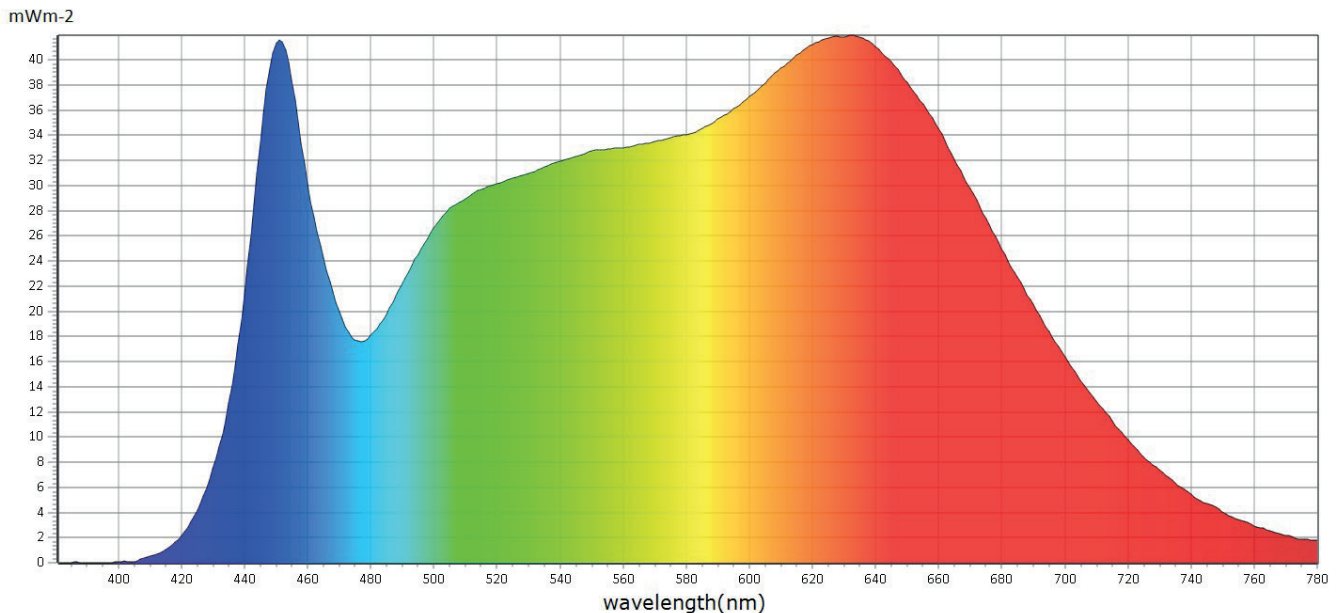
Information

User :	Measure Time :14:42:27
Model NO. : MK350S PREMIUM	Light Source :
Memo :	
4000	

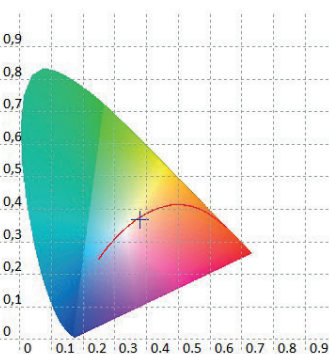
BASIC

CRI	: 97,7
X	: 0,3784
Y	: 0,3682
CCT	: 3993
LUX	: 2420

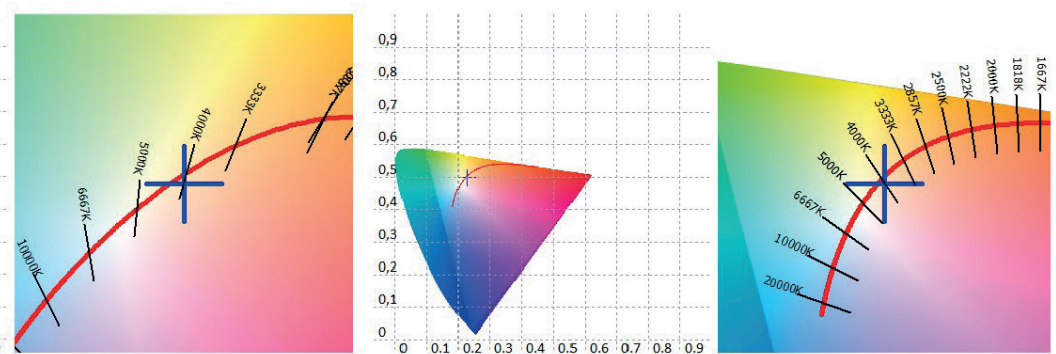
Spectrum



CIE1931



CIE1976



4000° K - Spectrum Test Report

Medium Zoom @ 5m



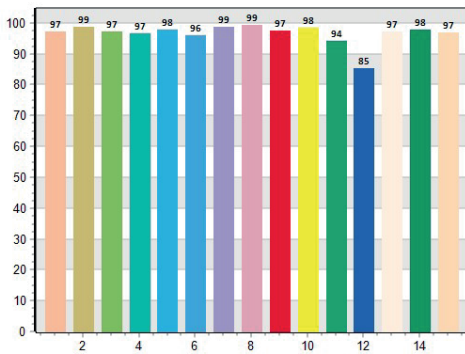
Information

User :	Measure Time :14:42:27
Model NO. : MK350S PREMIUM	Light Source :
Memo :	
4000	

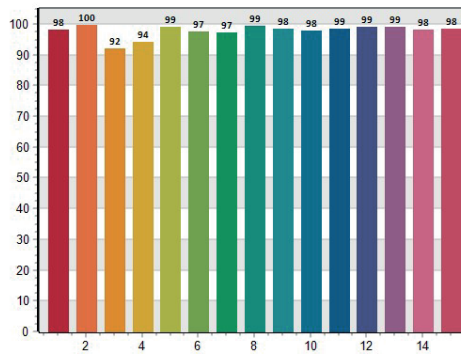
BASIC

CRI	: 97,7
X	: 0,3784
Y	: 0,3682
CCT	: 3993
LUX	: 2420

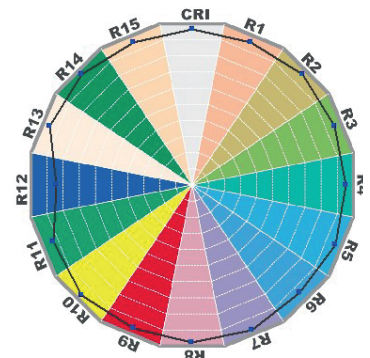
CRI: 97,73



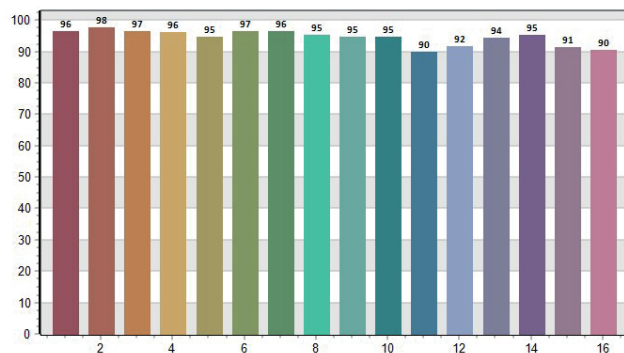
CQS: 97,04



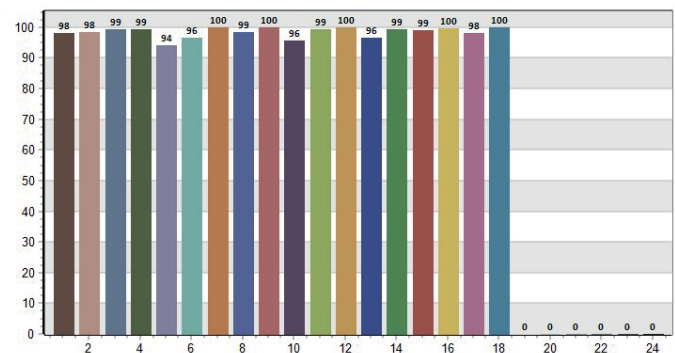
CRI-2



TM30: 95,14



TLCI: 97,91



CRI values, only R1-R8 are used to calculate final CRI

R1	R2	R3	R4	R5	R6	R7	R8	R9	R10	R11	R12	R13	R14	R15
97,3	98,7	97,2	96,6	97,9	96,1	98,7	99,3	97,4	98,4	94,2	85,2	97,3	97,9	96,9

TM30 C values, 16 binned values out of total of 99 C values

C1	C2	C3	C4	C5	C6	C7	C8	C9	C10	C11	C12	C13	C14	C15	C16
96,5	97,6	96,6	96,3	94,8	96,5	96,3	95,3	94,6	94,5	89,7	91,7	94,4	95,1	91,4	90,5

CQS Q values

Q1	Q2	Q3	Q4	Q5	Q6	Q7	Q8	Q9	Q10	Q11	Q12	Q13	Q14	Q15
98,1	99,7	92,1	94,3	99,0	97,5	97,2	99,4	98,3	97,9	98,6	99,0	99,1	98,1	98,4

4500° K - Spectrum Test Report

Medium Zoom @ 5m



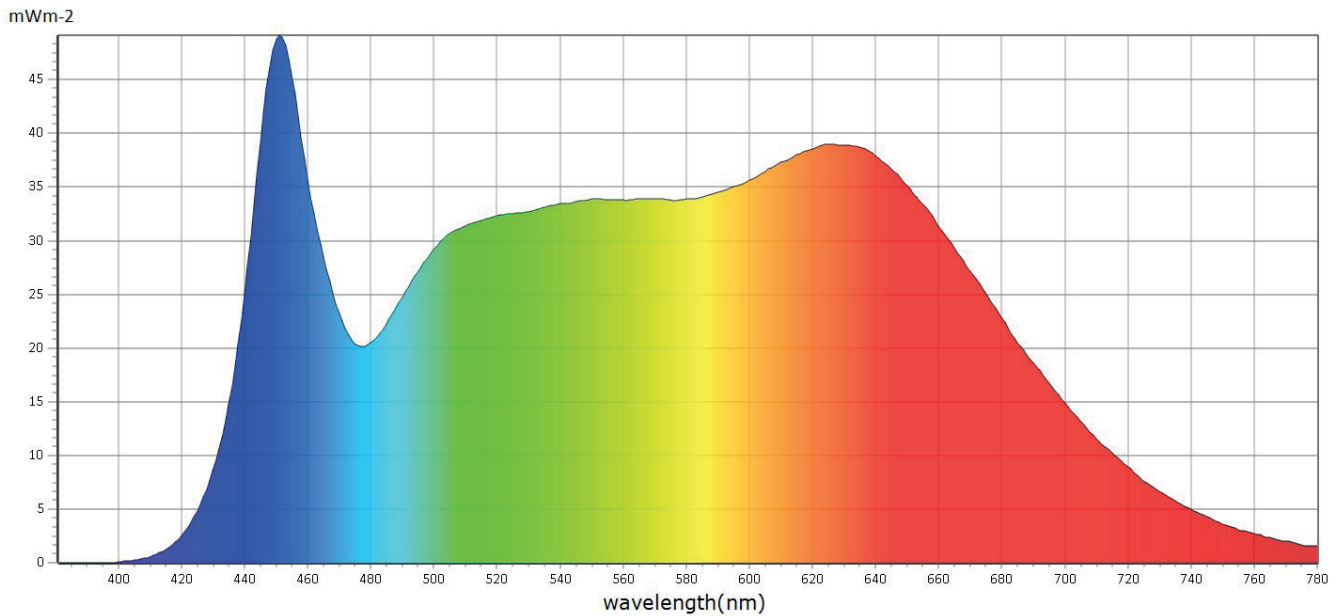
Information

User :	Measure Time :14:42:39
Model NO. : MK350S PREMIUM	Light Source :
Memo :	
4500	

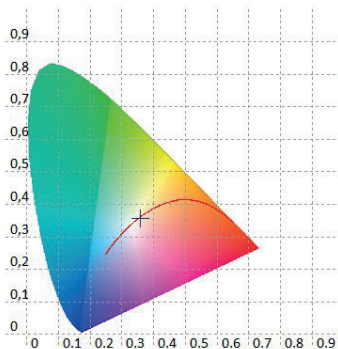
BASIC

CRI	: 98,2
X	: 0,3596
Y	: 0,3576
CCT	: 4504
LUX	: 2451

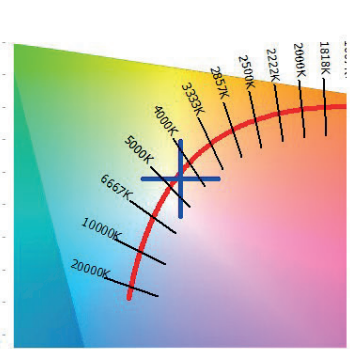
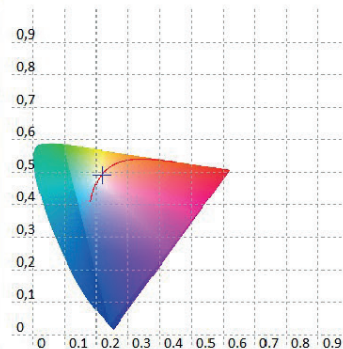
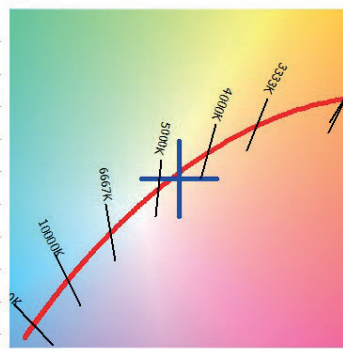
Spectrum



CIE1931



CIE1976



4500° K - Spectrum Test Report

Medium Zoom @ 5m



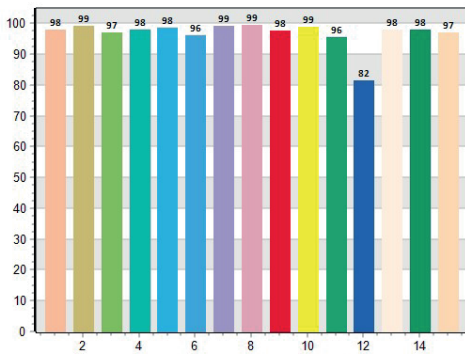
Information

User :	Measure Time :14:42:39
Model NO. : MK350S PREMIUM	Light Source :
Memo :	
4500	

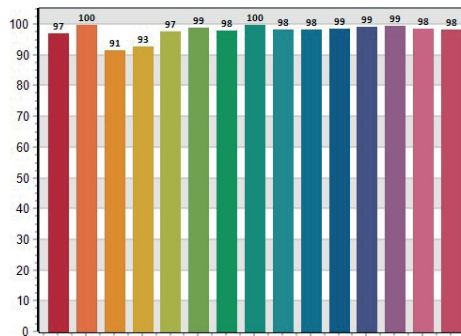
BASIC

CRI	: 98,2
X	: 0,3596
Y	: 0,3576
CCT	: 4504
LUX	: 2451

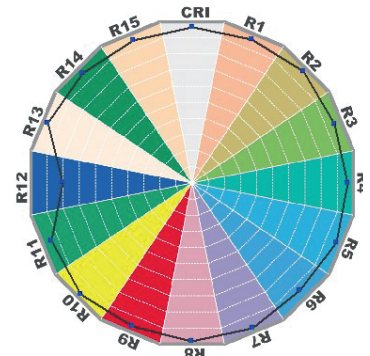
CRI: 98,15



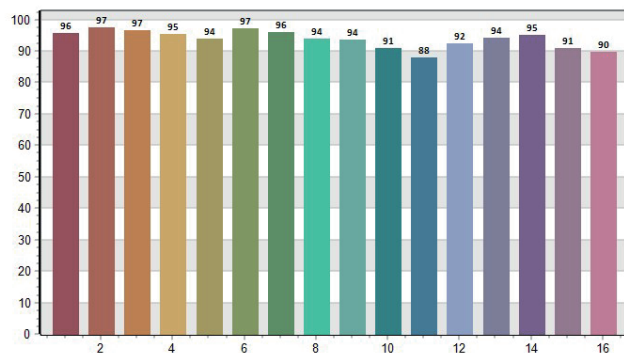
CQS: 96,69



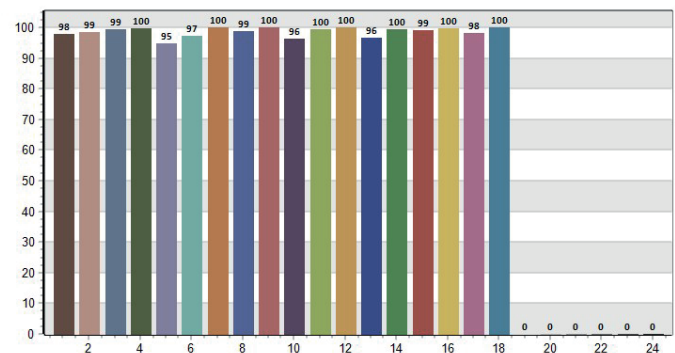
CRI-2



TM30: 94,51



TLCI: 98,13



CRI values, only R1-R8 are used to calculate final CRI

R1	R2	R3	R4	R5	R6	R7	R8	R9	R10	R11	R12	R13	R14	R15
97,9	99,2	97,1	97,9	98,5	96,0	99,2	99,5	97,6	98,9	95,5	81,5	98,0	97,9	97,0

TM30 C values, 16 binned values out of total of 99 C values

C1	C2	C3	C4	C5	C6	C7	C8	C9	C10	C11	C12	C13	C14	C15	C16
95,7	97,5	96,6	95,3	93,9	97,0	96,1	93,8	93,5	90,9	88,0	92,4	94,3	95,1	90,8	89,8

CQS Q values

Q1	Q2	Q3	Q4	Q5	Q6	Q7	Q8	Q9	Q10	Q11	Q12	Q13	Q14	Q15
97,0	99,7	91,4	92,7	97,4	98,9	97,9	99,6	98,2	98,1	98,6	99,2	99,3	98,4	98,0

5600° K - Spectrum Test Report

Medium Zoom @ 5m



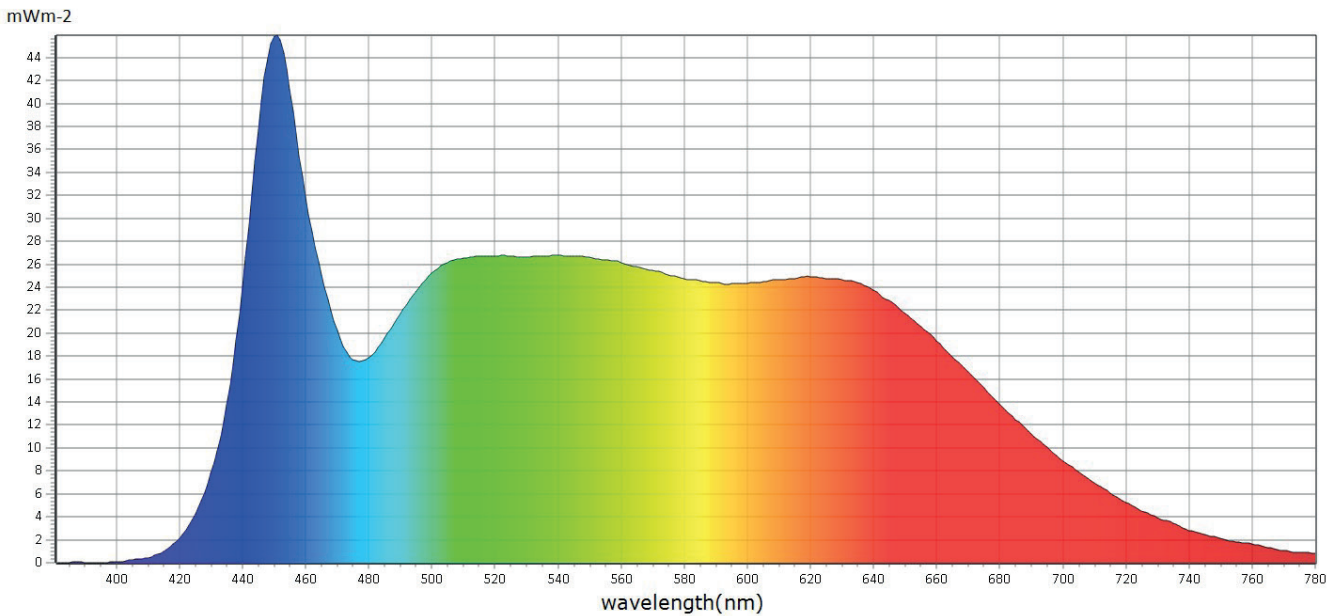
Information

User :	Measure Time :14:43:04
Model NO. : MK350S PREMIUM	Light Source :
Memo :	
5600	

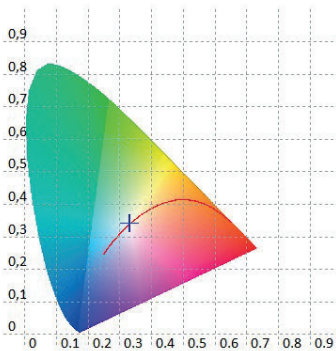
BASIC

CRI	: 97,1
X	: 0,3303
Y	: 0,3431
CCT	: 5593
LUX	: 1851

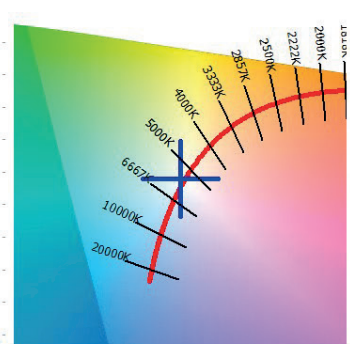
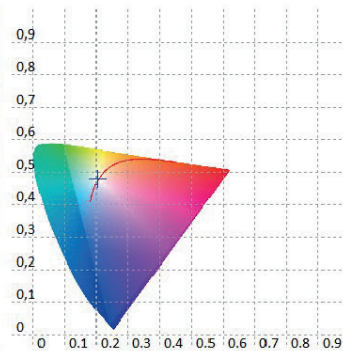
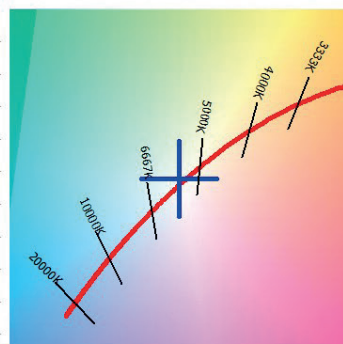
Spectrum



CIE1931



CIE1976



5600° K - Spectrum Test Report

Medium Zoom @ 5m



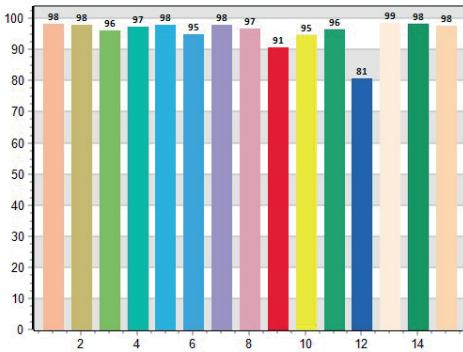
Information

User :	Measure Time :14:43:04
Model NO. : MK350S PREMIUM	Light Source :
Memo :	
5600	

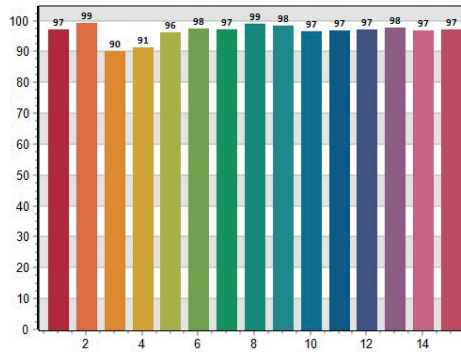
BASIC

CRI	: 97,1
X	: 0,3303
Y	: 0,3431
CCT	: 5593
LUX	: 1851

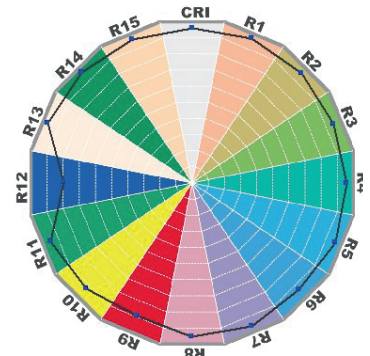
CRI: 97,11



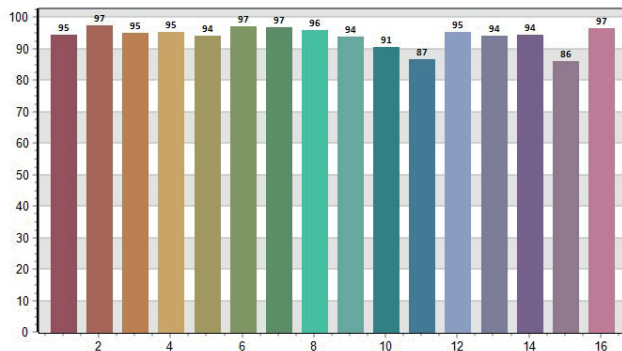
CQS: 95,79



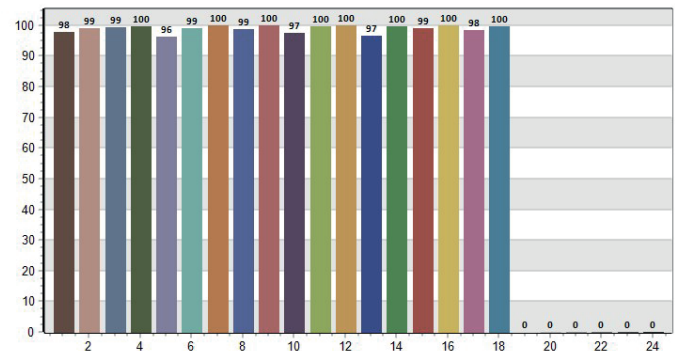
CRI-2



TM30: 94,47



TLCI: 98,56



CRI values, only R1-R8 are used to calculate final CRI

R1	R2	R3	R4	R5	R6	R7	R8	R9	R10	R11	R12	R13	R14	R15
98,2	97,9	96,2	97,4	97,8	94,9	97,8	96,7	90,7	94,5	96,3	80,7	98,5	98,1	97,6

TM30 C values, 16 binned values out of total of 99 C values

C1	C2	C3	C4	C5	C6	C7	C8	C9	C10	C11	C12	C13	C14	C15	C16
94,5	97,4	95,1	95,4	94,1	97,2	97,0	95,8	93,8	90,6	86,6	95,3	94,2	94,5	86,2	96,6

CQS Q values

Q1	Q2	Q3	Q4	Q5	Q6	Q7	Q8	Q9	Q10	Q11	Q12	Q13	Q14	Q15
97,1	99,3	90,2	91,5	96,2	97,5	97,0	98,8	98,3	96,6	96,8	97,2	97,7	96,8	97,0

6500° K - Spectrum Test Report

Medium Zoom @ 5m



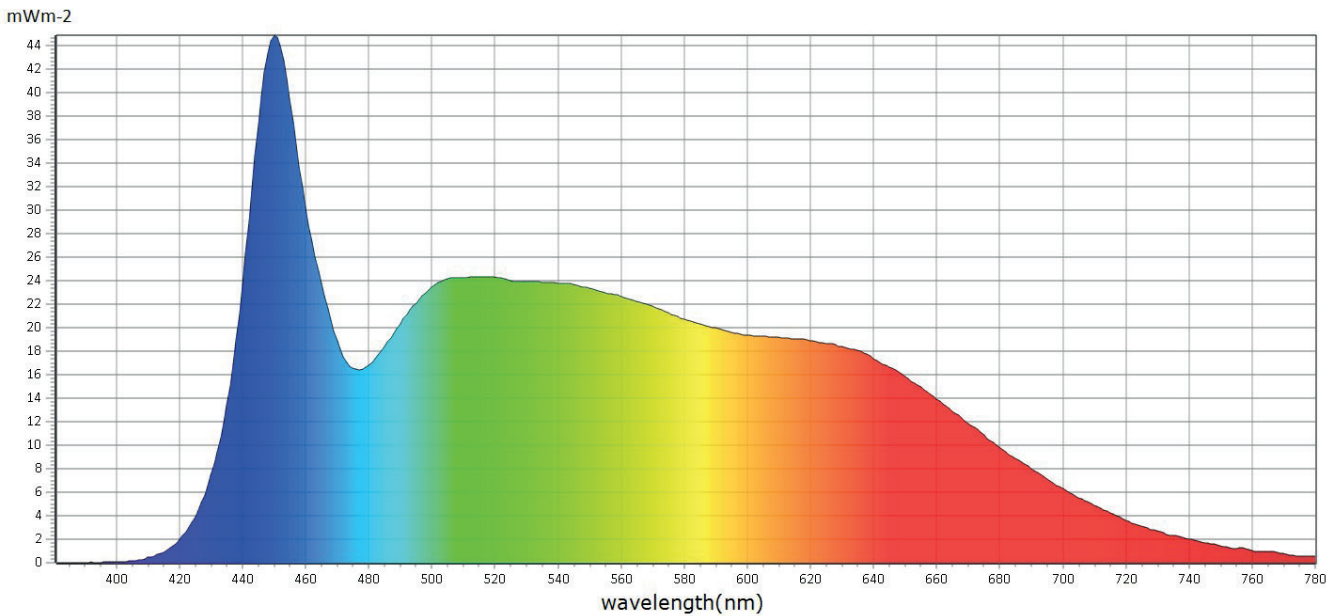
Information

BASIC

User :	Measure Time :14:43:22
Model NO. : MK350S PREMIUM	Light Source :
Memo :	
6500	

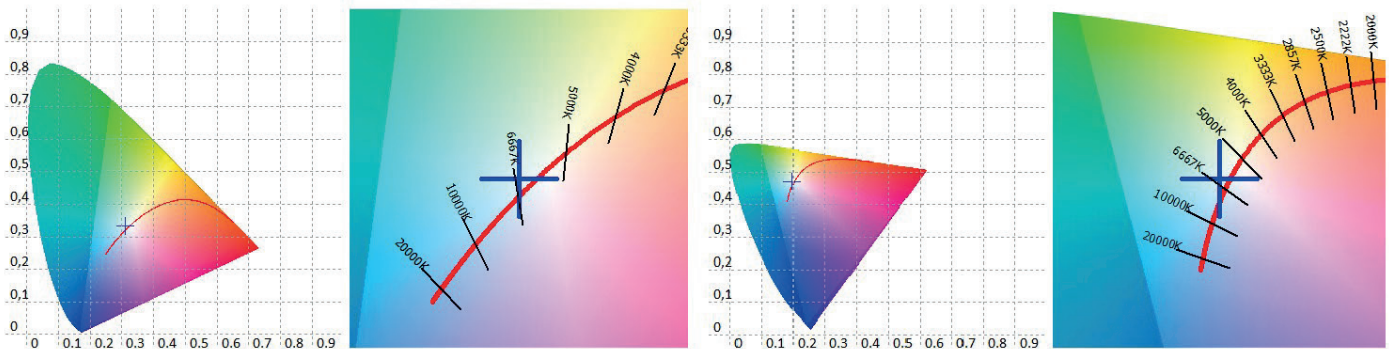
CRI	: 94,6
X	: 0,3116
Y	: 0,3333
CCT	: 6531
LUX	: 1586

Spectrum



CIE1931

CIE1976



6500° K - Spectrum Test Report

Medium Zoom @ 5m



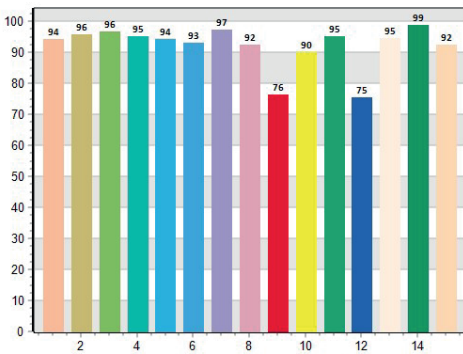
Information

User :	Measure Time :14:43:22
Model NO. : MK350S PREMIUM	Light Source :
Memo :	
6500	

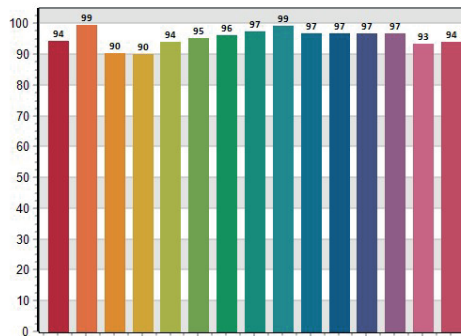
BASIC

CRI	: 94,6
X	: 0,3116
Y	: 0,3333
CCT	: 6531
LUX	: 1586

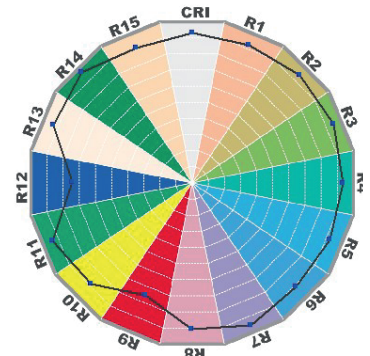
CRI: 94,64



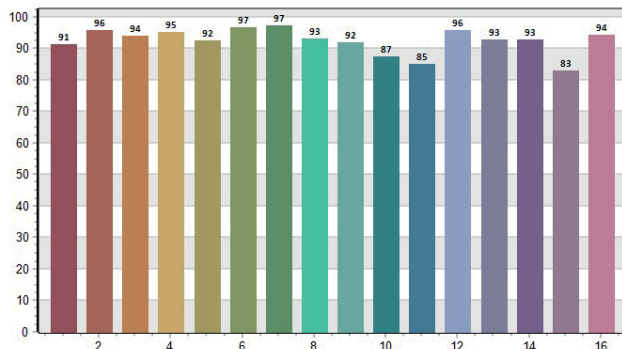
CQS: 94,66



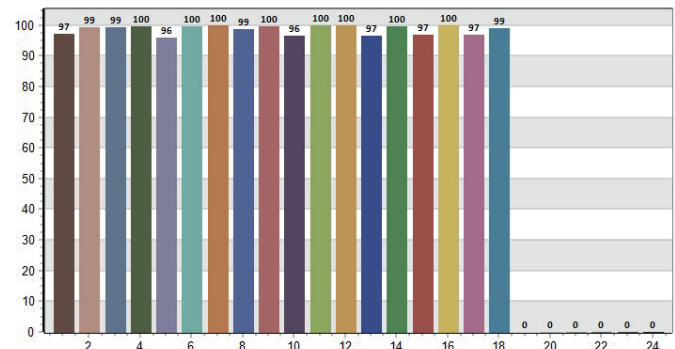
CRI-2



TM30: 93,01



TLCI: 98,13



CRI values, only R1-R8 are used to calculate final CRI

R1	R2	R3	R4	R5	R6	R7	R8	R9	R10	R11	R12	R13	R14	R15
94,1	95,5	96,4	95,0	94,0	92,7	97,2	92,2	76,3	89,8	94,9	75,5	94,5	98,6	92,2

TM30 C values, 16 binned values out of total of 99 C values

C1	C2	C3	C4	C5	C6	C7	C8	C9	C10	C11	C12	C13	C14	C15	C16
91,2	95,8	94,0	95,2	92,3	96,5	97,2	93,1	91,8	87,2	85,0	95,6	92,8	92,7	82,9	94,1

CQS Q values

Q1	Q2	Q3	Q4	Q5	Q6	Q7	Q8	Q9	Q10	Q11	Q12	Q13	Q14	Q15
94,3	99,5	90,2	90,0	94,0	95,3	96,0	97,4	99,2	96,9	96,8	96,8	96,7	93,4	94,1