

The Swiss army knife of white LED projectors. The **ParKolor 200DW** is equipped with a 400W CW + WW COB LED and allows a variation of white, without derating in regulated modes, from 2,700°K to 6,500°K with an exceptional CRI of 97 for a maximum flux of 18000 lumen. **ParKolor 200DW** has a motorized zoom range from 10° to 60°. Its design, in die-cast aluminum, designed for maximum heat exchange and the addition of 2 fans allow permanent operation without loss of flux at the power of 250W. A "Silent" mode without ventilation is also available.

Thanks to its IP65 rating and its removable connector protection cap, this projector allows versatile use both indoors and outdoors.



## Source

Engine	COB Cool White+Warm White
LED Watts	400W
Engine CCT	Dynamic White
Engine Life (L70)	> 55000 H
Refresh Rate	1200Hz
Dimming	Electronic - 16 bits
Dimming Curves	Linear, Square, Inv Square, S-curve
Dimming Modes	Dim0 (0s), Dim1 (0.25s), Dim2 (0.5s), Dim3 (0.75s), Dim4 (1s)
Strobe Speed	1 - 20 Hz
Strobe Modes	Standard, Sync Random, Random

## Electrical

Max Consumption	400W
Standby Power Consumption	10W
Voltage Range	110V/240V - 50Hz/60Hz
Power Factor	0.87@110V - 0.86@240V
Current (Max)	3.8A@110V - 1.74A@240V
Fuse	T4A@250V
Connector	PowerCON True1 (In/Out)
Max Fixtures per Circuits (16A)	3@110V - 7@240V

## Compliance & Protection

IP Rating	IP 65
Certification	CE, Rohs

## Optical

Lens Diameter	178 mm
Zoom Range	10° - 62°
Zoom Ratio	6.2 : 1

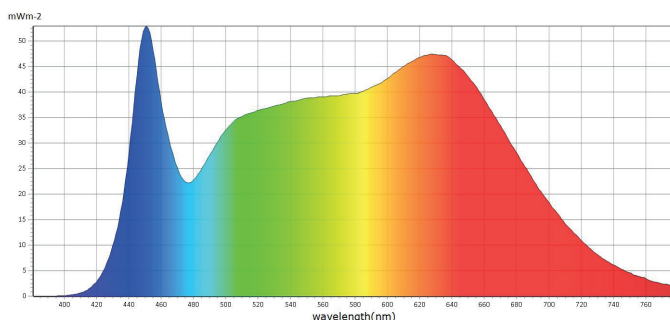
## Colour System

Colour System	Cool White + Warm White
Control	8 bits / 16 bits

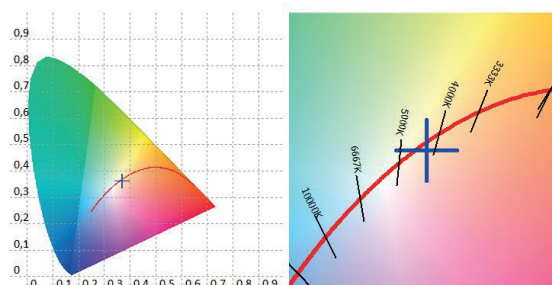
## Performances

Fixture Luminous Flux (Max)	18361 lm
Fixture Illuminance	Narrow: 9100 lux@5m 10° Medium: 3210 lux@5m 25° Wide: 1209 lux@5m 60°
Fixture CCT Output	≈2700 - ≈6500 K
CRI	@6500K: 94.64 @2700K: 97.74
Tm30	@6500K: 93.01 @2700K: 96.34
TLCI	@6500K: 98.13 @2700K: 96.91
CQS	@6500K: 94.66 @2700K: 94.50

## CW + WW @100% 4230°K (regulated mode OFF)

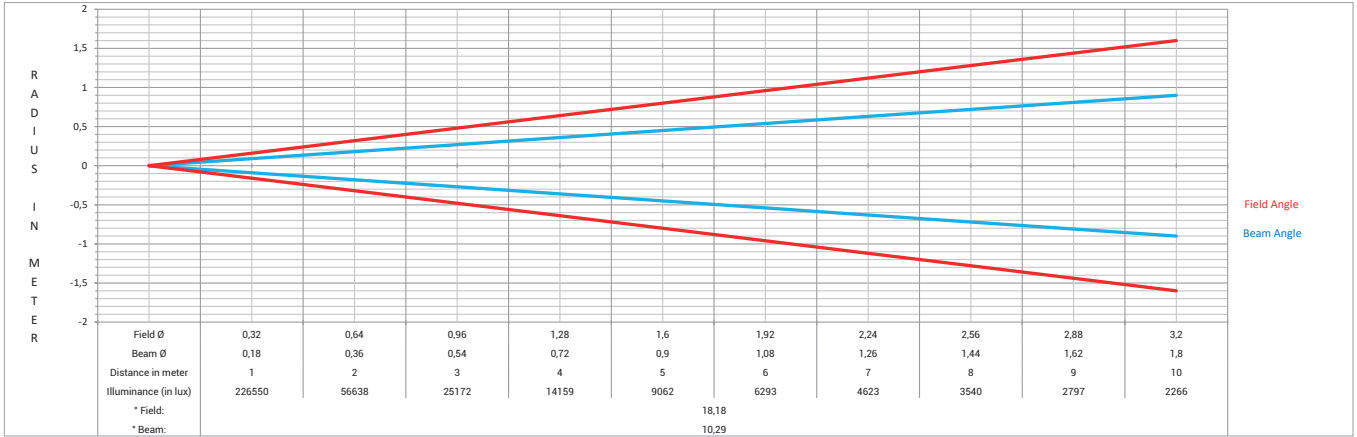


## CIE1931

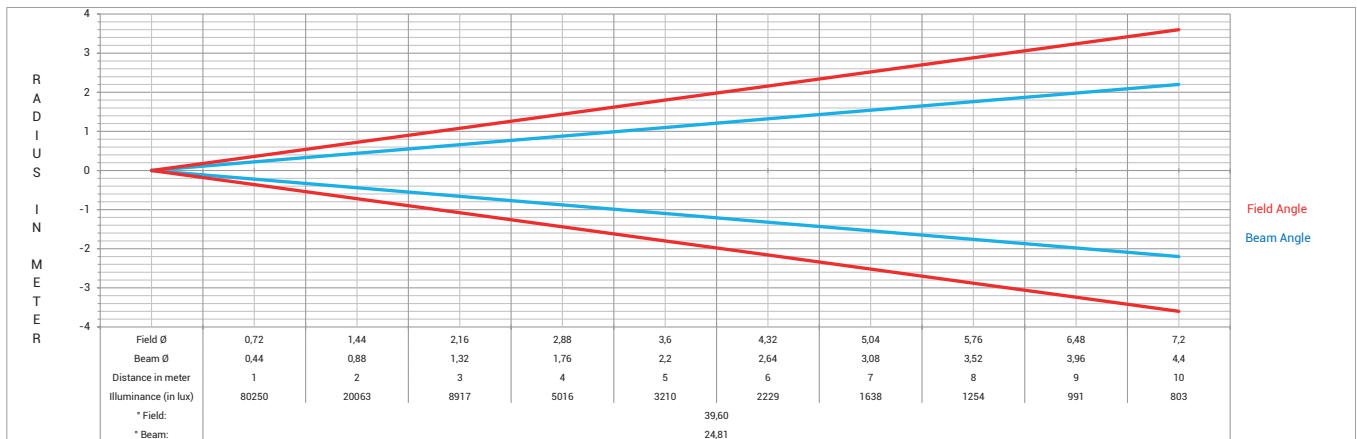


## Photometry

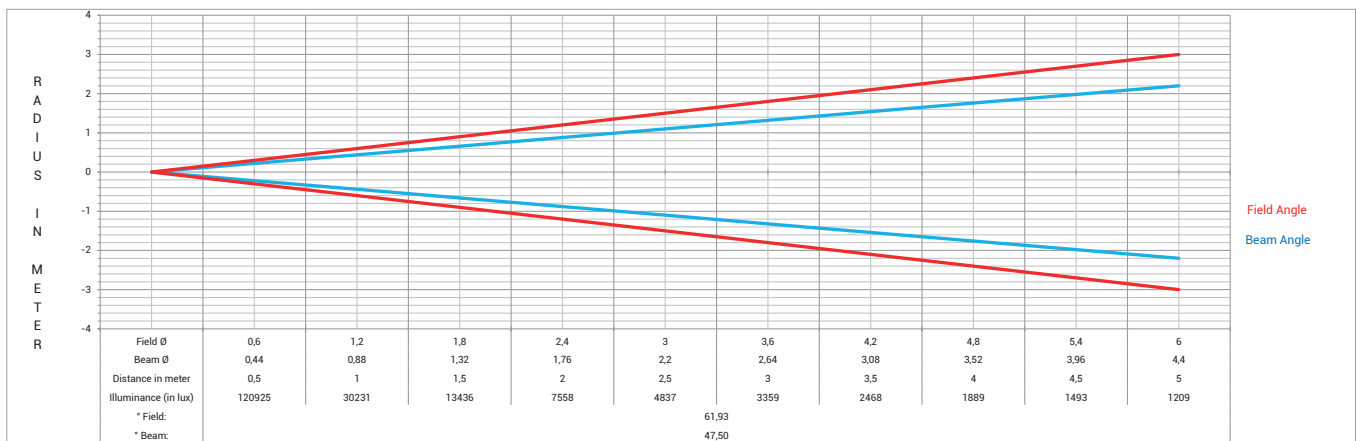
### Narrow Angle



### Medium Angle



### Wide Angle



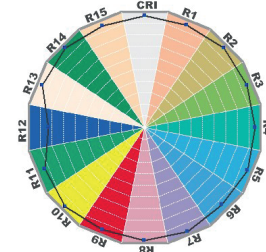
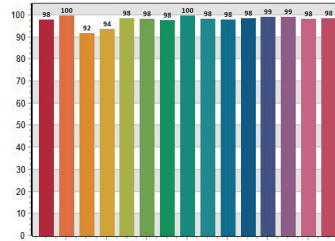
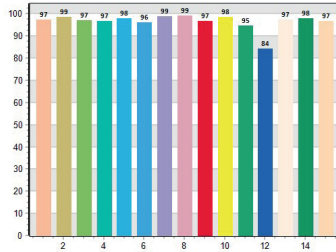
## Colorimetry

**CW + WW @100% 4230°K (regulated power mode OFF)**

■ CRI: 97,74

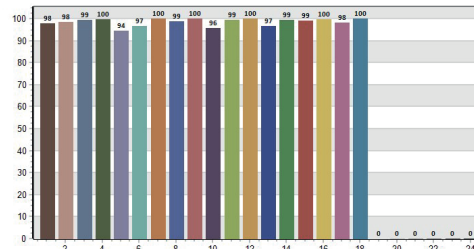
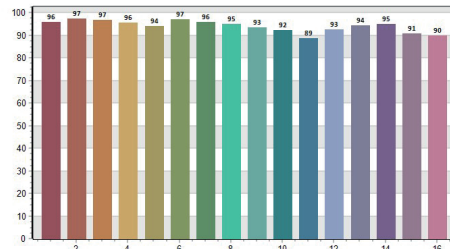
■ CQS: 96,89

■ CRI-2



■ TM30: 94,64

■ TLCI: 97,96

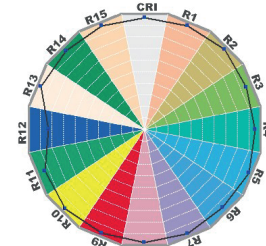
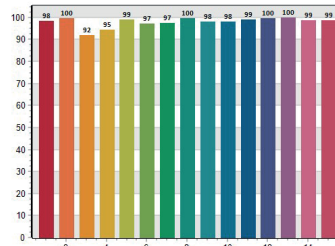
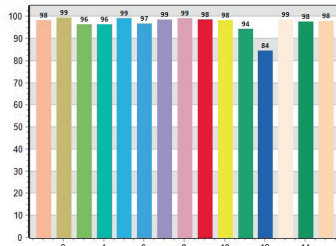


**CW + WW @100% 4230°K (regulated power mode ON)**

■ CRI: 98,02

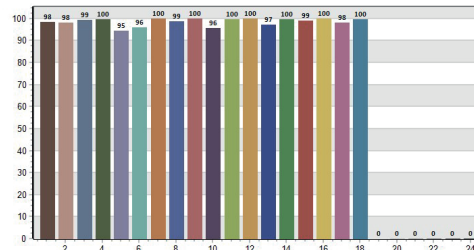
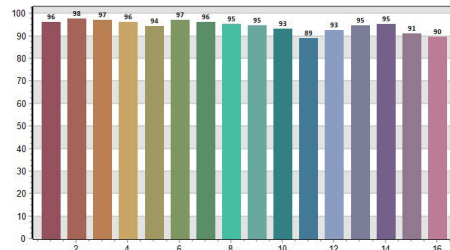
■ CQS: 97,16

■ CRI-2



■ TM30: 95,04

■ TLCI: 97,97

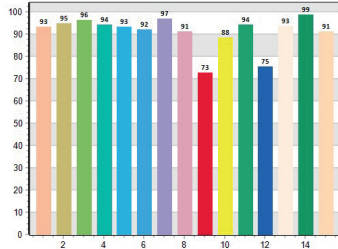


[Find the complete photometry here :](#)

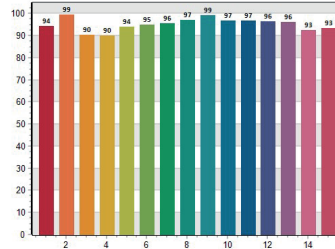


**CW @100% 6663°K (regulated power mode OFF)**

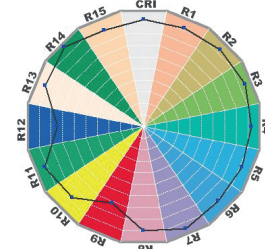
■ CRI: 93,93



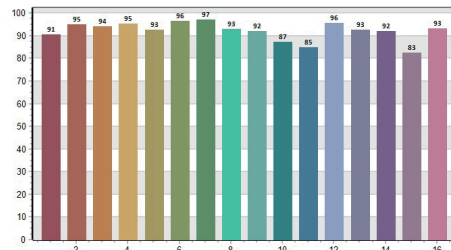
■ CQS: 94,43



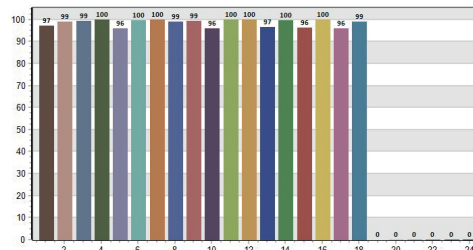
■ CRI-2



■ TM30: 92,85

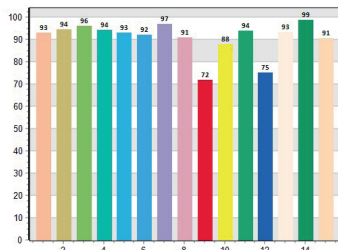


■ TLCI: 97,96

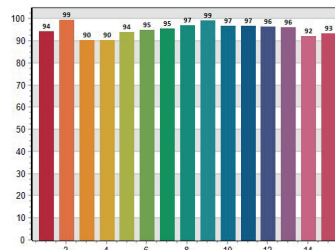


**CW @100% 6656°K (regulated power mode ON)**

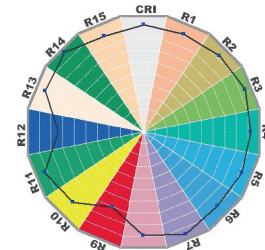
■ CRI: 93,73



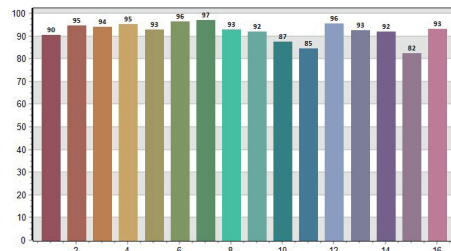
■ CQS: 94,37



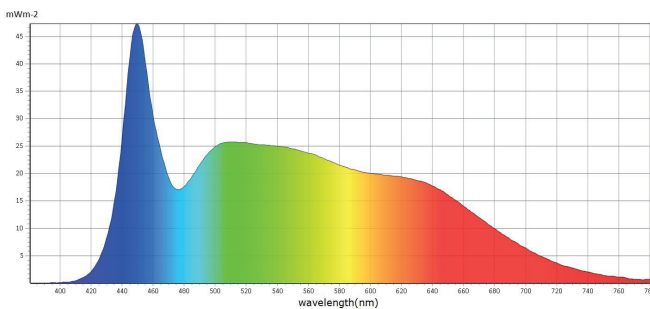
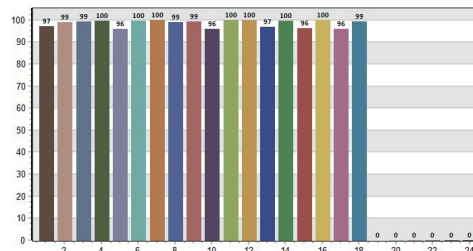
■ CRI-2



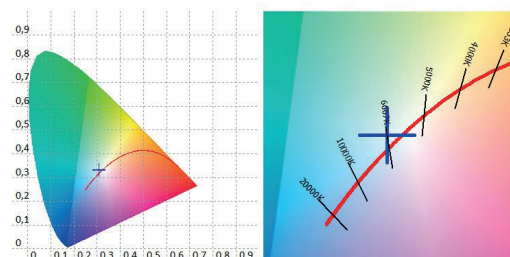
■ TM30: 92,80



■ TLCI: 97,92



■ CIE1931

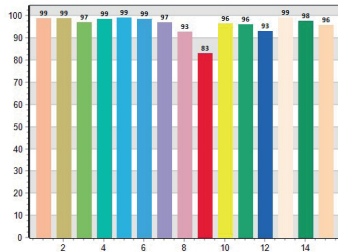


# TECHNICAL DATASHEET

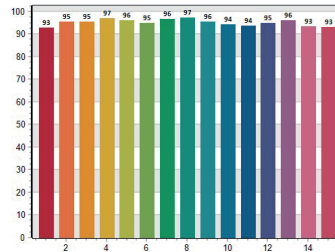
# ParKolor 200DW

**WW @100% 2676°K (regulated power mode OFF)**

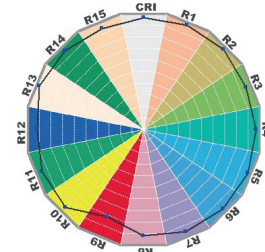
■ CRI: 97,74



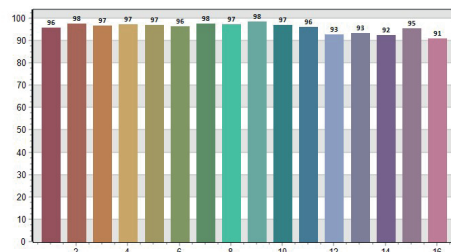
■ CQS: 94,68



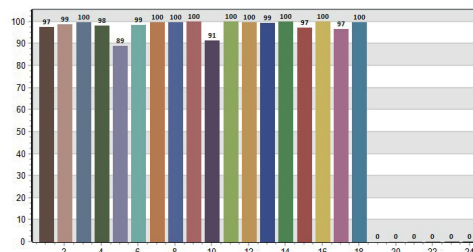
■ CRI-2



■ TM30: 96,35

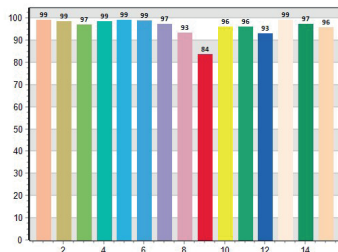


■ TLCI: 96,78

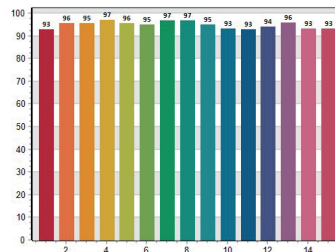


**WW @100% 2683°K (regulated power mode ON)**

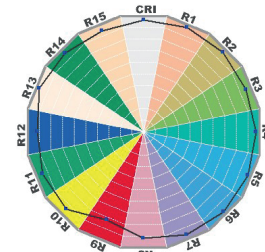
■ CRI: 97,75



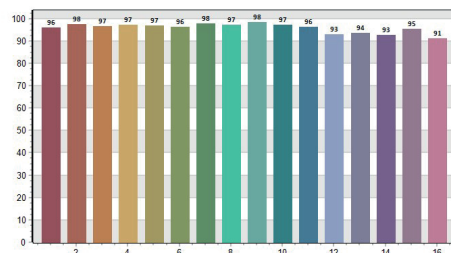
■ CQS: 94,49



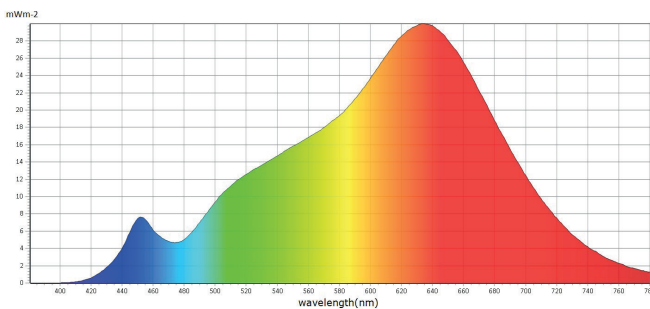
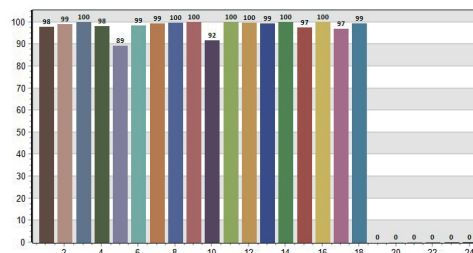
■ CRI-2



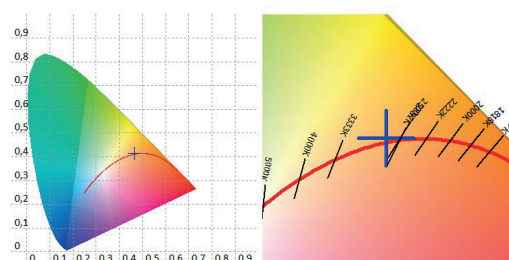
■ TM30: 96,40



■ TLCI: 96,87



■ CIE1931



POWER MEASUREMENT ACCORDING TO COLOR TEMPERATURE											
	COLOR TEMP	2700K	3000K	3200K	3500K	4000K	4500K	5000K	5600K	6000K	6500K
REGULATED POWER ON	ALL FAN MODES	206W	236W	258W	300W	390W	331W	243W	234W	214W	202W
REGULATED POWER ON	FAN AUTO/HIGH	206W	236W	243W	243W	250W	244W	243W	236W	213W	202W
	FAN QUIET	204W	232W	232W	232W	235W	233W	232W	232W	214W	202W
	FAN OFF	170W	170W	169W	169W	172W	169W	169W	168W	168W	168W

COLOR RENDERING INDEX											
COLOR TEMPERATURE	2700K	3000K	3200K	3500K	4000K	4500K	5000K	5600K	6000K	6500K	
CRI	97.7	97.9	97.7	97.6	97.7	98.2	97.7	97.1	95.2	94.6	

PHOTOMETRIC MEASUREMENTS			REGULATED POWER OFF		REGULATED POWER ON					
			ALL FAN MODE		FAN MODE AUTO/HIGH		FAN MODE QUIET		SILENT MODE FAN OFF	
	BEAM ANGLE	FIELD ANGLE	LUX	LUMEN	LUX	LUMEN	LUX	LUMEN	LUX	LUMEN
NARROW ZOOM	10°	18°	9062	7330	5699	5300	5375	4400	3890	3541
MEDIUM ZOOM	24°	39°	3210	14000	2072	9345	1941	8600	1404	6100
WIDE ZOOM	47°	61°	1209	18000	768	11500	729	11000	527	8000

## Control

DMX Control	DMX (USITT DMX-512-A) RDM (ANSI/ESTA E1.20)
DMX Modes	9 User Modes
Channel Count	Solo - Dim 8bit - 1 Solo - Dim 16bit - 2 CCT - Dim 8bit - 3 CCT + Zoom - Dim 8bit - 4 CCT + Zoom - Dim 16bit - 6 CW+WW - Dim 8bit - 4 CW+WW + Zoom - Dim 8bit - 5 CW+WW + Zoom - Dim 16bit - 6 Full - 16bit - 9
Local Control	OLED panel Navigation buttons
RDM Functions	Yes

## Noise Level

Fan Mode Auto	41dB @ 1m
Fan Mode High	45dB @ 1m
Fan Mode Quiet	34dB @ 1m
Fan Mode Silent	N/A (Fan OFF)

## Connectors

Power	PowerCoN True 1 (In/Out)
DMX	XLR 5 Pin (In/Out)

## Thermal

Cooling System	Forced & Passive
Cooling Modes	Auto - High - Quiet - Silent
Max Ambient Temperature (Ta Max)	45°C
Min Ambient Temperature (Ta Min)	-10°C
Max Surface Temperature, steady state, at Ta 40°	67°C
Total Heat Dissipation (Calculated +/- 10%)	1365 BTU/h - 400W@240V
Heat Dissipation (standby) (Calculated +/- 10%)	34 BTU/h - 10W@240V

# TECHNICAL DATASHEET

# ParKolor 200DW

## Material

Housing Die Cast Aluminium

## Physical

### Fixture

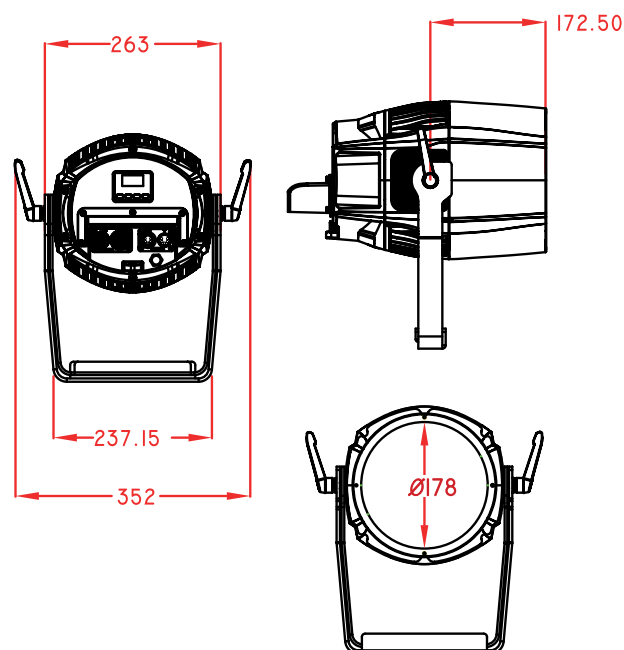
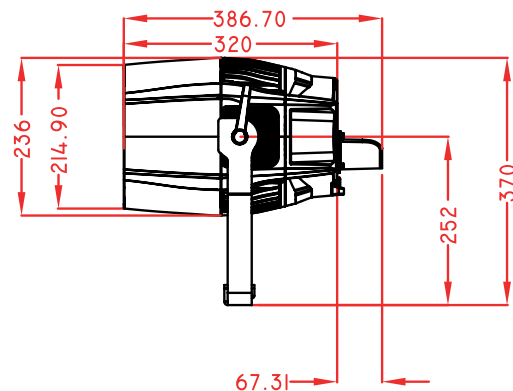
LxWxH 352mm x 320mm x 370mm

Weight 10.3 Kg

### Carton Box

LxWxH 375mm x 375mm x 580mm

Weight 13.1 Kg



## Included

Removable Connector Protection Cap 1

Powercord 1.80m

Quick Start Yes

## Optional Accessories

Filter Frame + Barndoor



## Download

[Manual](#)



[DMX Chart](#)



[All Downloads](#)





---

---

# *Starway*

22 Rue Édouard Buffard  
77144 Montevrain  
**France**

[starway.eu](http://starway.eu)

---

---