

PHOTOMETRY

ParKolor^{200HD}



A beautifully finished die cast aluminum spotlight, the **ParKolor 200HD** is equipped with a 180W RGBW COB LED providing a luminous flux of 4,365 lumens.

Its design for maximum heat exchange and the addition of 2 fans ensure continuous operation with no loss of flux at maximum power (less than 5% in "Quiet" mode).

An accessory supplied with the fixture provides water protection for the various connectors, allowing outdoor use over long periods. Like the 120HD, the **ParKolor 200HD** features a zoom with a similar adjustment range from 7° to 60°. The **ParKolor 200HD** is equipped with the BC Color System color management system.

In addition to the possibility of using 10 white macros from 10,000° K to 2,700° K, with RGBW channels remaining active while macros are in use, these can be instantly modified to suit an existing fleet, or to work in color from a given white, as if the machine were being used with gel.

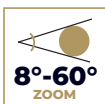


Table of Contents

Specifications	3
Photometric Data Narrow Zoom.....	4
Photometric Data Medium Zoom	5
Photometric Data Wide Zoom.....	6
Macro 10000K Spectrum Test Report	7
Macro 8000K Spectrum Test Report	9
Macro 6500K Spectrum Test Report	11
Macro 5600K Spectrum Test Report	13
Macro 5000K Spectrum Test Report	15
Macro 4500K Spectrum Test Report	17
Macro 4000K Spectrum Test Report	19
Macro 3200K Spectrum Test Report	21
Macro 3000K Spectrum Test Report	23
Macro 2700K Spectrum Test Report	25
RGBW @100% Spectrum Test Report.....	27
Red @100% Spectrum Test Report.....	28
Green @100% Spectrum Test Report	29
Blue @100% Spectrum Test Report.....	30
White @100% Spectrum Test Report.....	31

Source

Engine	COB RGB White
LED Watts	180W
Engine CCT	7978K (White LED Only)
Engine Life (L70)	> 55000 H
Refresh Rate	1200Hz
Dimming	Electronic - 16 bits
Dimming Curves	Linear, Square, Inv Square, S-curve
Dimming Modes	Dim0 (0s), Dim1 (0.25s), Dim2 (0.5s), Dim3 (0.75s), Dim4 (1s)
Strobe Speed	1 - 20 Hz
Strobe Modes	Standard, Sync Random, Random

Optical

Lens Diameter	178 mm
Zoom Range	7° - 60°
Zoom Ratio	7.5 :1

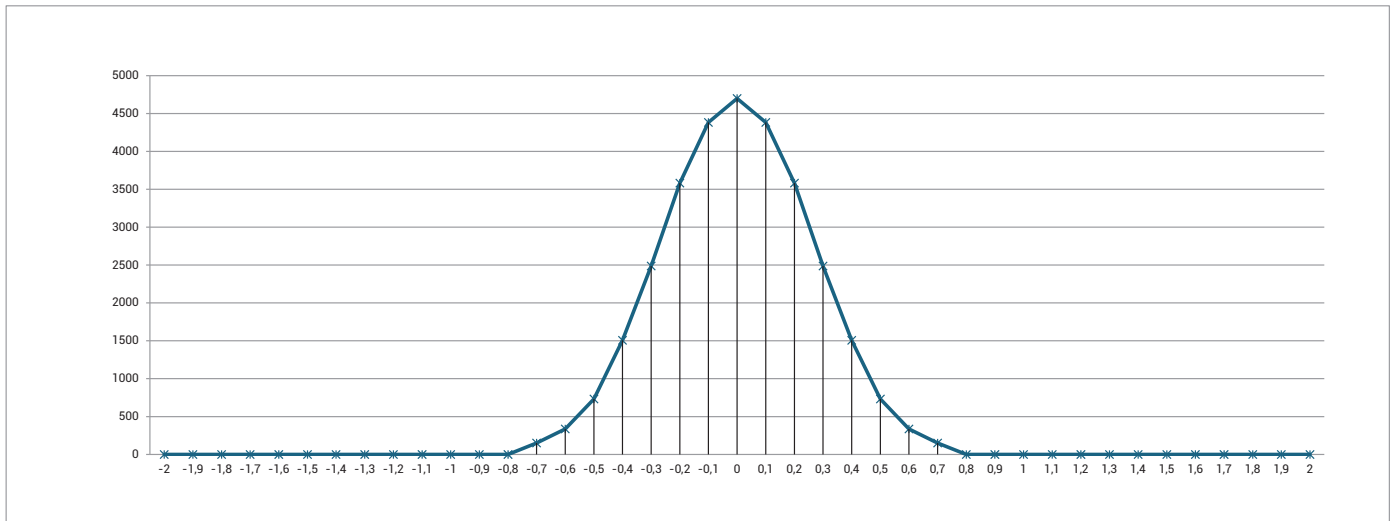
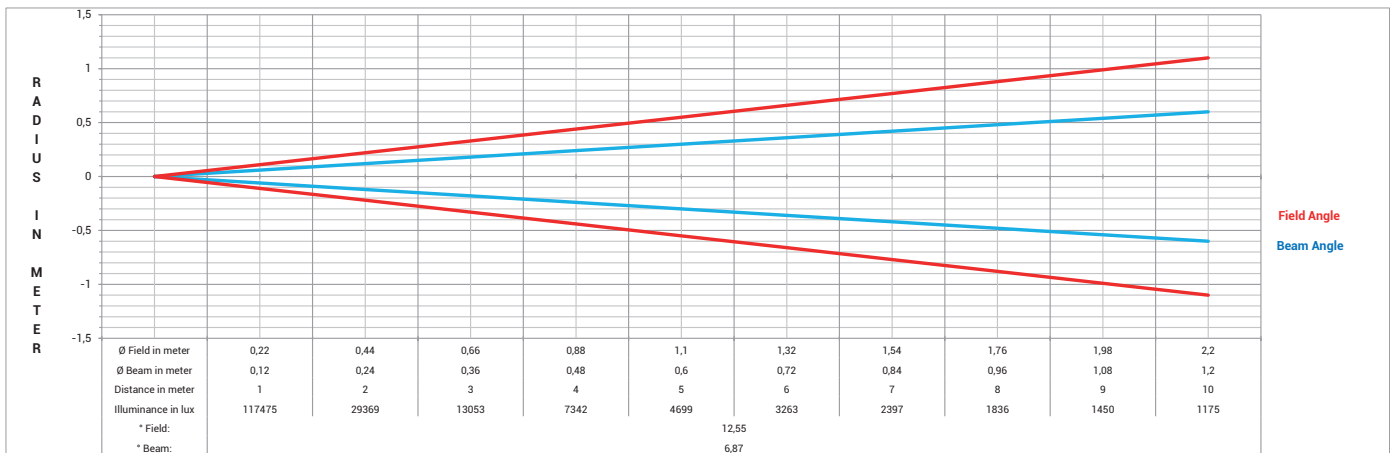
Performances

Fixture Luminous Flux (Max)	4365 lm
Fixture Illuminance	Narrow: 4700 lux@5m 7° Medium: 825 lux@5m 25° Wide: 326 lux@5m 60°
Fixture CCT Output	2700 - 10000 K
CRI	Native White LED Only: 74.51 @10000k: 79
Tm30	Native White LED Only: 72.5 @10000k: 82.40
TLCI	Native White LED Only: 49.10 @10000k: 60.20
CQS	Native White LED Only: 70.18 @10000k: 84.74

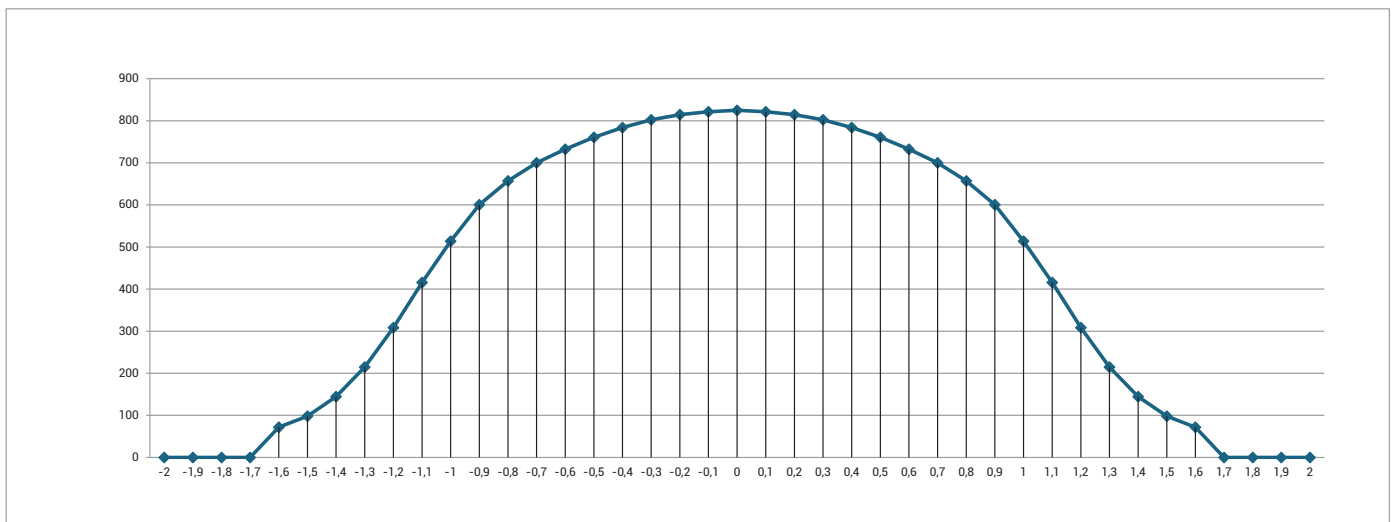
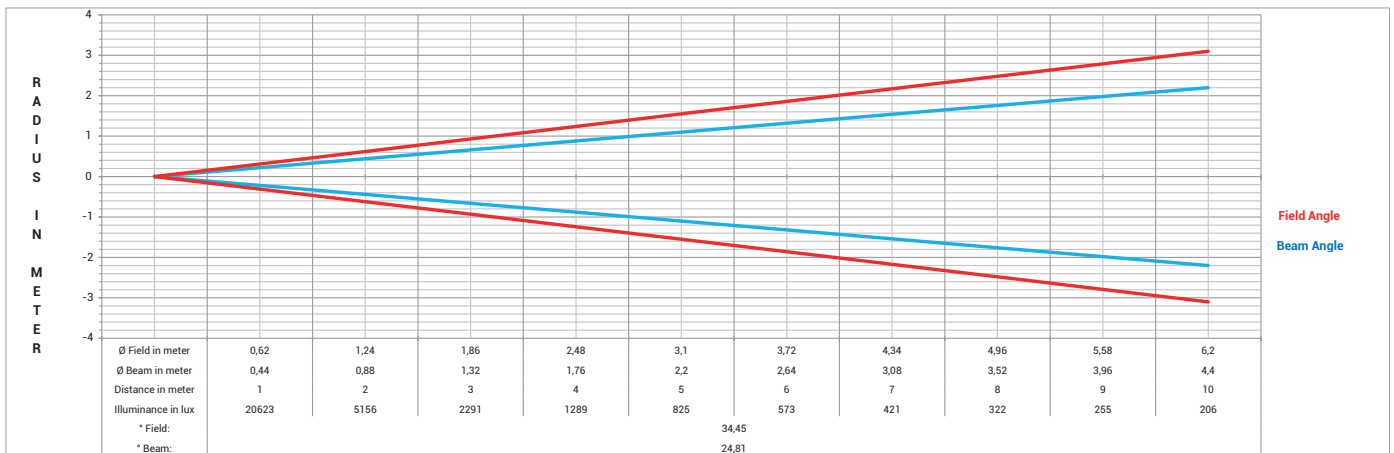
Colour System

Colour System	RGBW - BC Color System
Control	8 bits / 16 bits

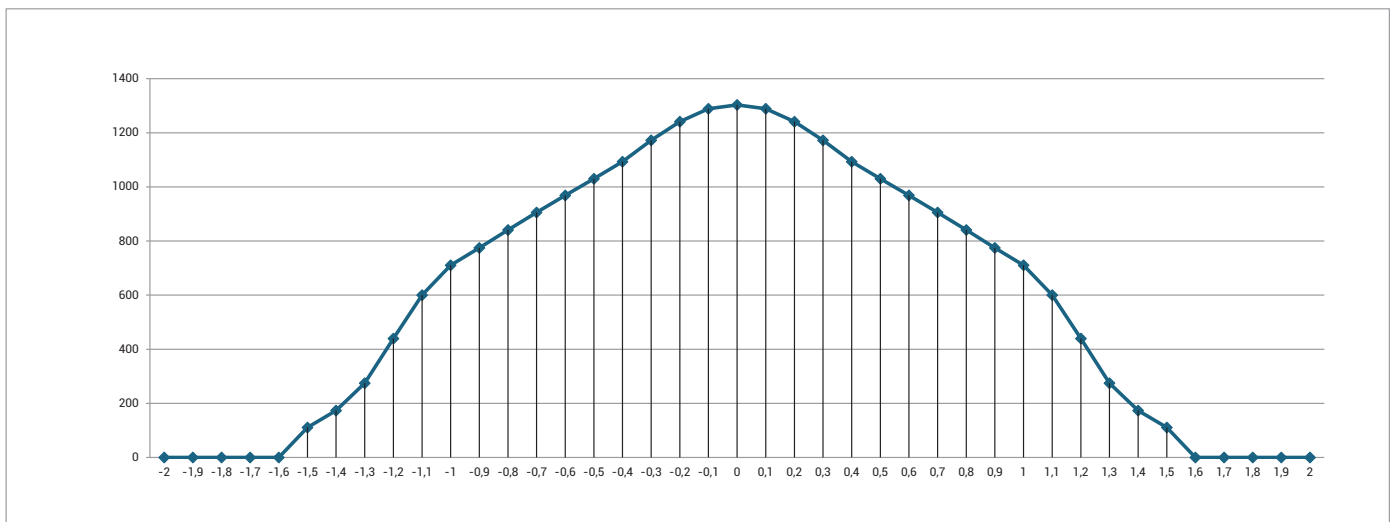
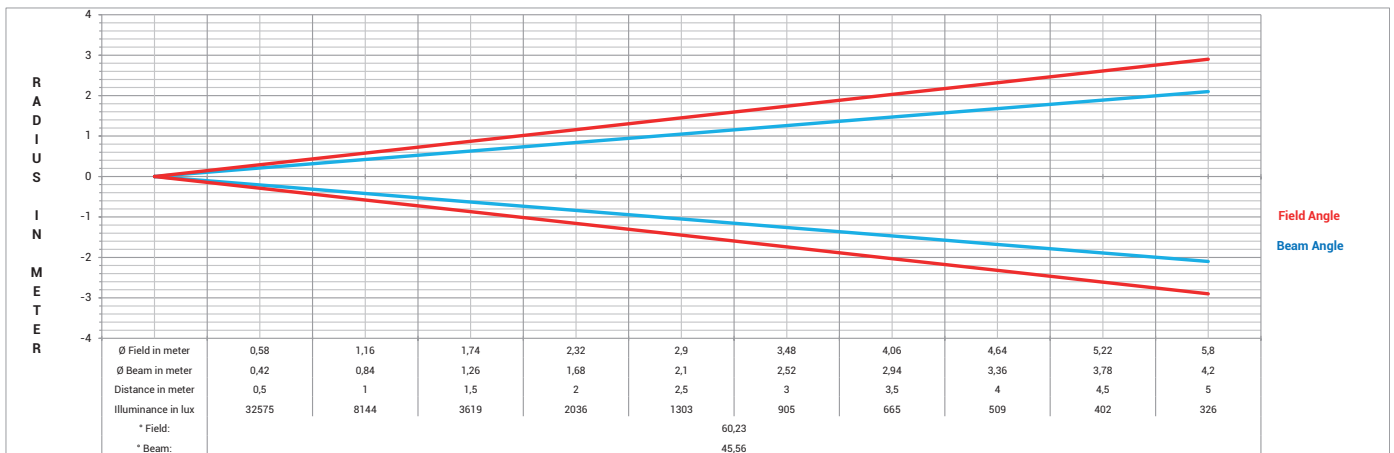
Photometric Data - Narrow Zoom



Photometric Data - Medium Zoom



Photometric Data - Wide Zoom



Macro 10000K Test Report

Medium Zoom @ 5m



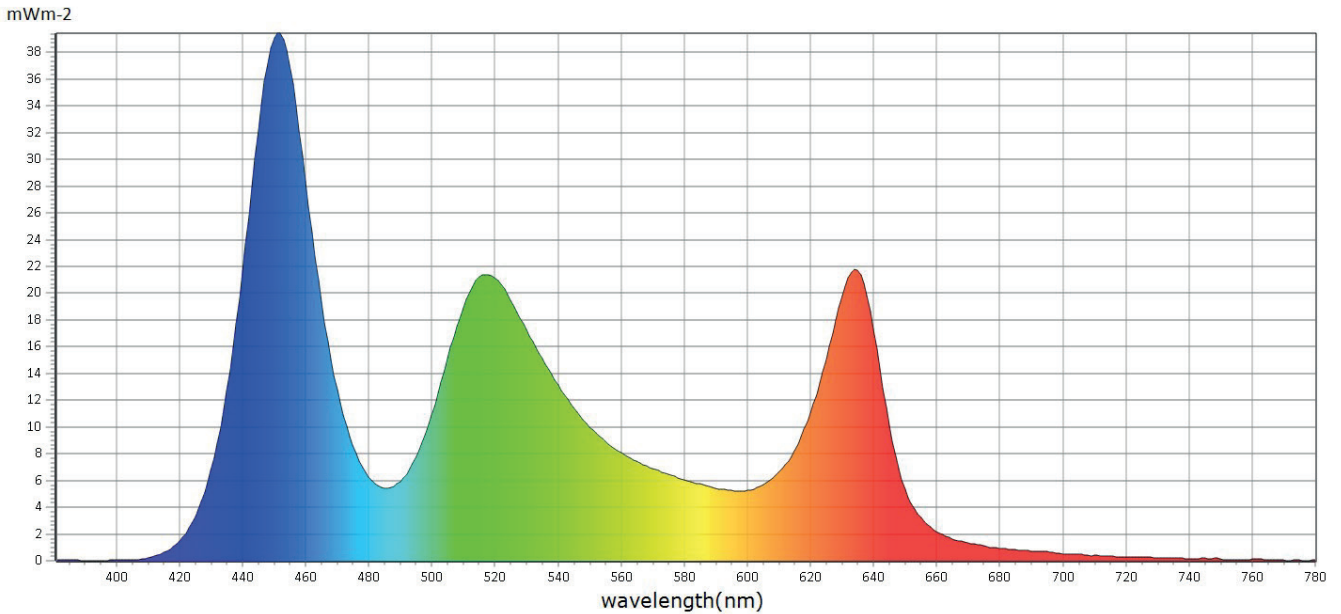
Information

User :	Measure Time :11:48:02
Model NO. : MK350S PREMIUM	Light Source :
Memo :	
Zoom 127 - Fan Auto - 10000	

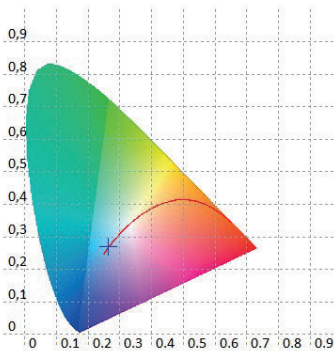
BASIC

CRI	: 79,0
X	: 0,2635
Y	: 0,2703
CCT	: 14500
LUX	: 789,8

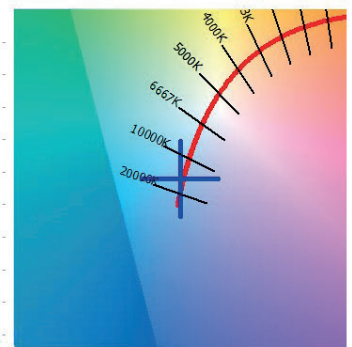
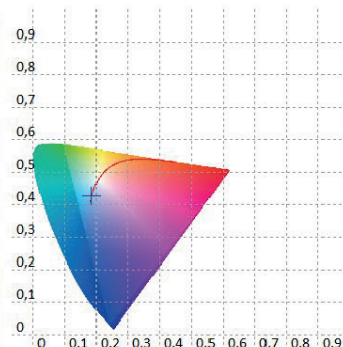
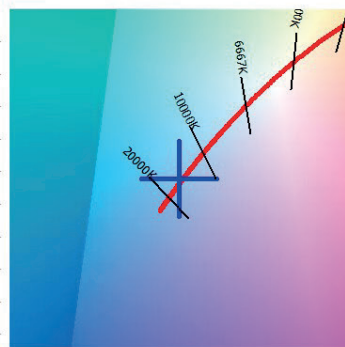
Spectrum



CIE1931



CIE1976



Macro 10000K Test Report

Medium Zoom @ 5m



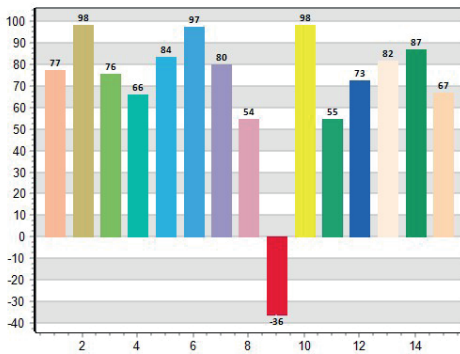
Information

User :	Measure Time :11:48:02
Model NO. : MK350S PREMIUM	Light Source :
Memo :	
Zoom 127 - Fan Auto - 10000	

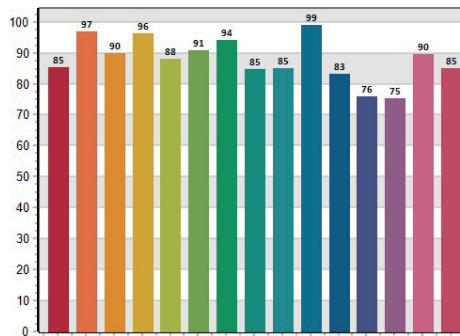
BASIC

CRI	: 79,0
X	: 0,2635
Y	: 0,2703
CCT	: 14500
LUX	: 789,8

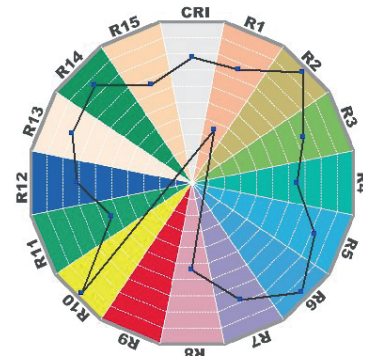
CRI: 79,04



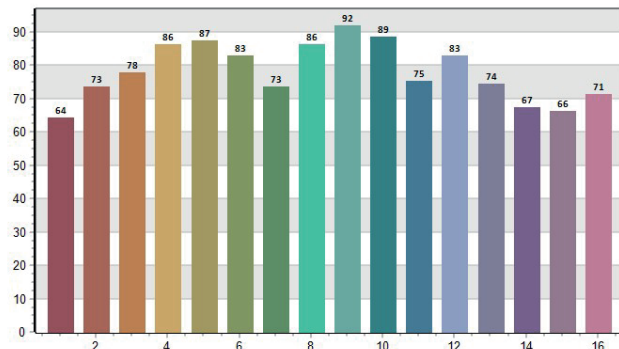
CQS: 86,16



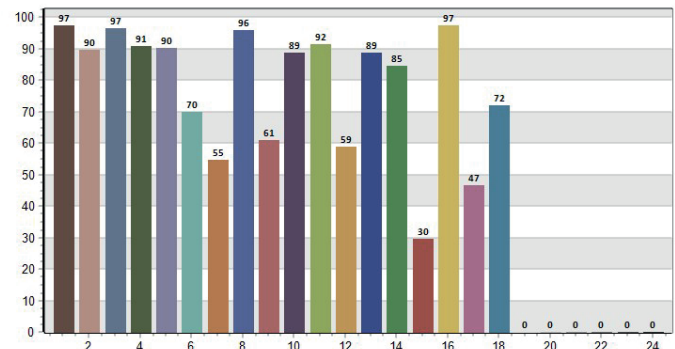
CRI-2



TM30: 82,15



TLCI: 62,05



CRI values, only R1-R8 are used to calculate final CRI

R1	R2	R3	R4	R5	R6	R7	R8	R9	R10	R11	R12	R13	R14	R15
77,3	98,2	75,6	66,0	83,5	97,2	80,1	54,5	-36,0	98,0	54,7	72,6	81,5	86,7	66,7

TM30 C values, 16 binned values out of total of 99 C values

C1	C2	C3	C4	C5	C6	C7	C8	C9	C10	C11	C12	C13	C14	C15	C16
64,4	73,4	77,8	86,2	87,5	83,0	73,5	86,3	91,9	88,5	75,2	82,9	74,4	67,3	66,3	71,4

CQS Q values

Q1	Q2	Q3	Q4	Q5	Q6	Q7	Q8	Q9	Q10	Q11	Q12	Q13	Q14	Q15
85,3	97,0	89,9	96,3	88,1	90,7	94,1	84,8	85,1	99,0	83,2	75,8	75,3	89,5	85,1

Macro 8000K Test Report

Medium Zoom @ 5m



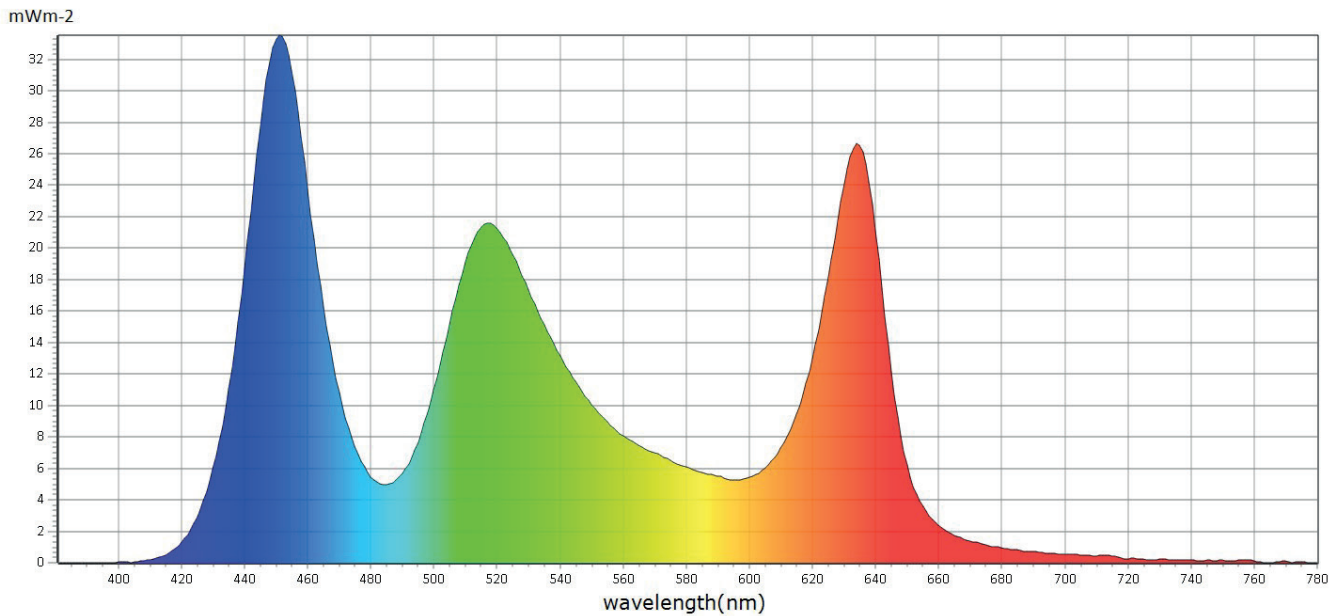
Information

User :	Measure Time :11:47:37
Model NO. : MK350S PREMIUM	Light Source :
Memo :	
Zoom 127 - Fan Auto - 8000	

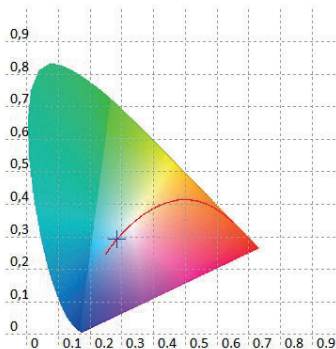
BASIC

CRI	: 71,8
X	: 0,2843
Y	: 0,2919
CCT	: 9423
LUX	: 808,6

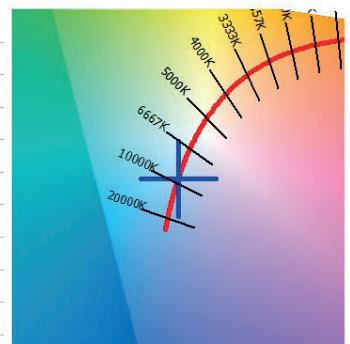
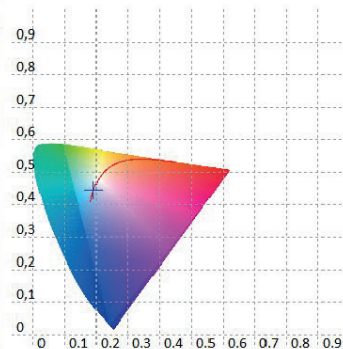
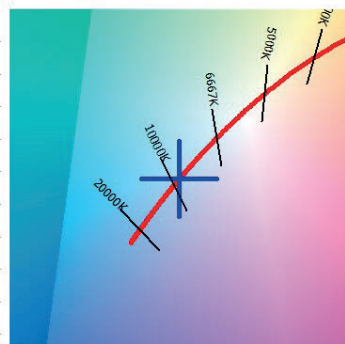
Spectrum



CIE1931



CIE1976



Macro 8000K Test Report

Medium Zoom @ 5m



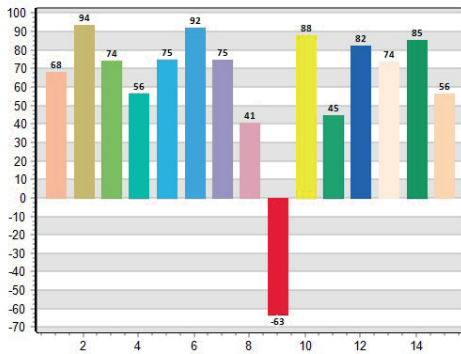
Information

User :	Measure Time :11:47:37
Model NO. : MK350S PREMIUM	Light Source :
Memo :	
Zoom 127 - Fan Auto - 8000	

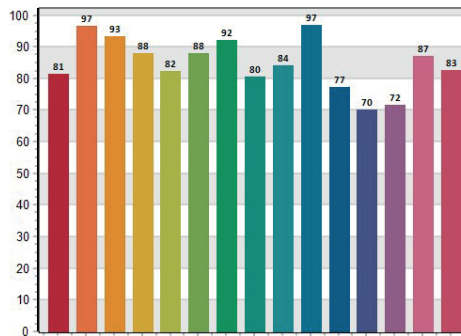
BASIC

CRI	: 71,8
X	: 0,2843
Y	: 0,2919
CCT	: 9423
LUX	: 808,6

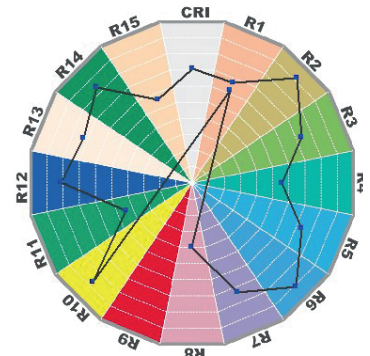
CRI: 71,83



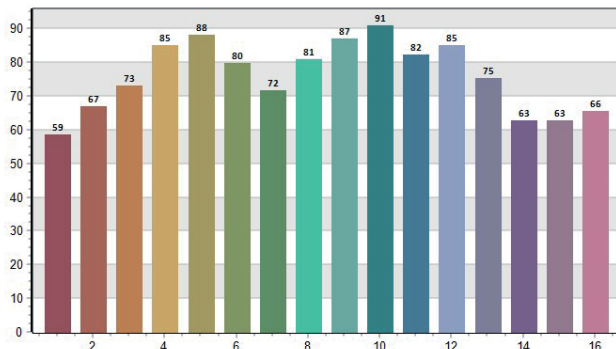
CQS: 82,90



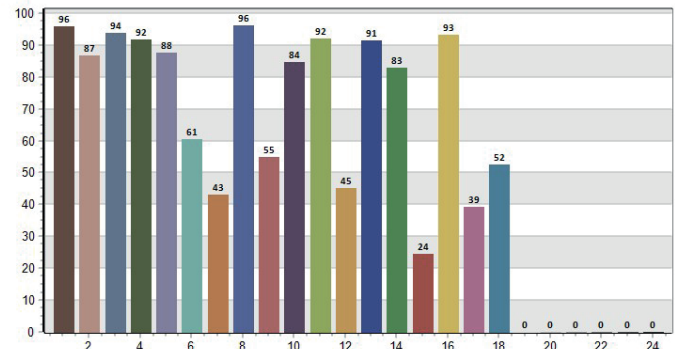
CRI-2



TM30: 80,07



TLCI: 53,73



CRI values, only R1-R8 are used to calculate final CRI

R1	R2	R3	R4	R5	R6	R7	R8	R9	R10	R11	R12	R13	R14	R15
68,0	93,6	74,4	56,4	74,6	92,1	74,7	40,7	-63,2	87,9	44,9	82,3	73,7	85,3	56,4

TM30 C values, 16 binned values out of total of 99 C values

C1	C2	C3	C4	C5	C6	C7	C8	C9	C10	C11	C12	C13	C14	C15	C16
58,5	67,0	73,0	85,2	88,0	79,7	71,5	80,8	87,0	90,9	82,4	85,1	75,4	62,7	62,8	65,7

CQS Q values

Q1	Q2	Q3	Q4	Q5	Q6	Q7	Q8	Q9	Q10	Q11	Q12	Q13	Q14	Q15
81,4	96,7	93,2	88,1	82,2	88,1	92,1	80,5	84,0	96,9	77,3	70,0	71,8	87,2	82,8

Macro 6500K Test Report

Medium Zoom @ 5m



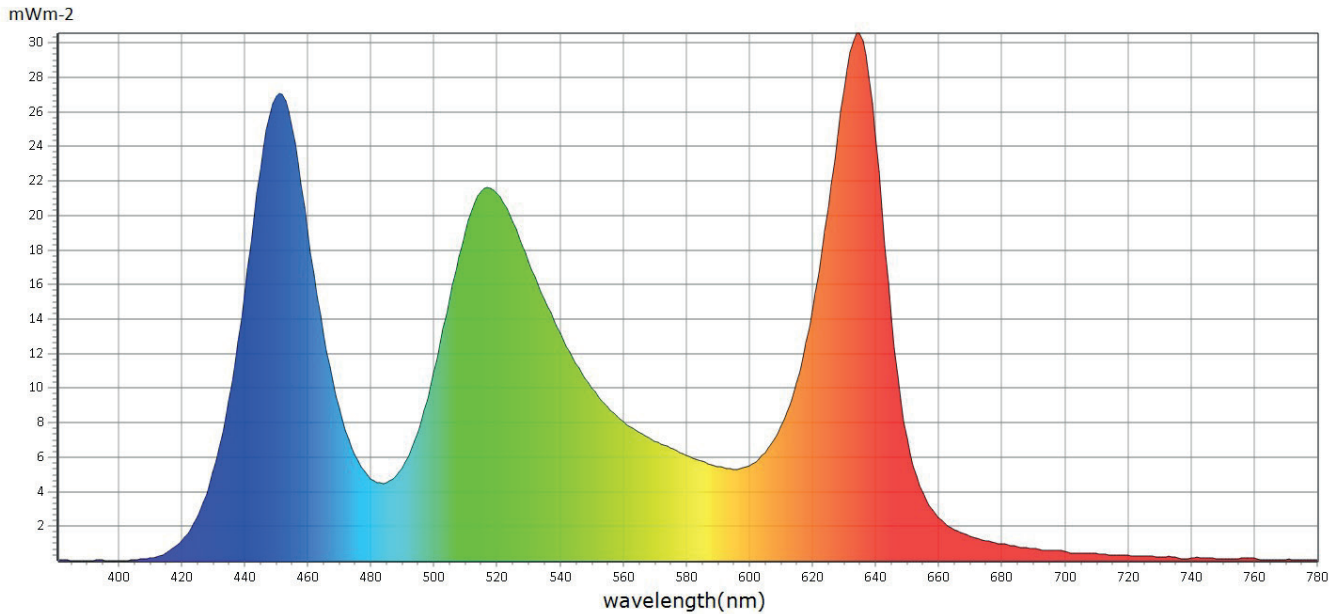
Information

User :	Measure Time :11:47:34
Model NO. : MK350S PREMIUM	Light Source :
Memo :	
Zoom 127 - Fan Auto - 6500	

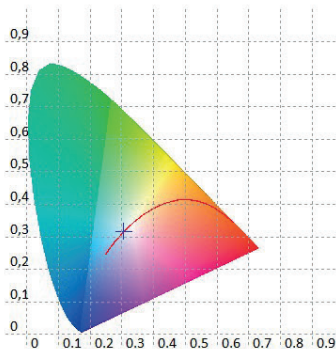
BASIC

CRI	: 67,5
X	: 0,3062
Y	: 0,3174
CCT	: 6999
LUX	: 820,4

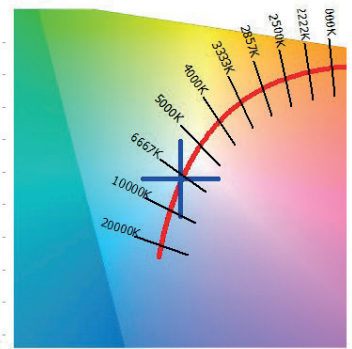
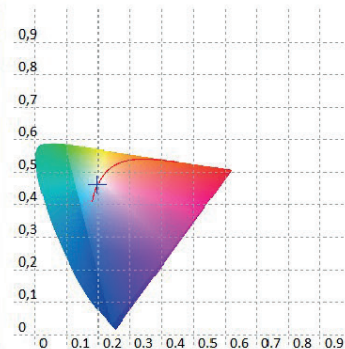
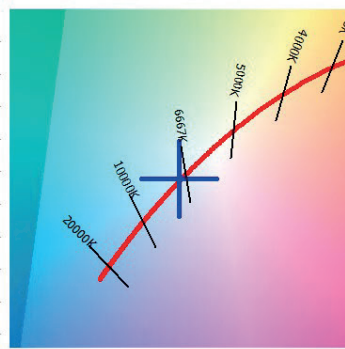
Spectrum



CIE1931



CIE1976



Macro 6500K Test Report

Medium Zoom @ 5m



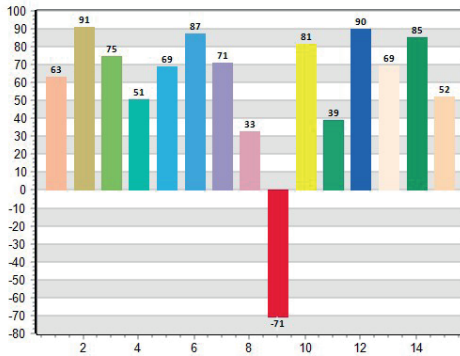
Information

User :	Measure Time :11:47:34
Model NO. : MK350S PREMIUM	Light Source :
Memo :	
Zoom 127 - Fan Auto - 6500	

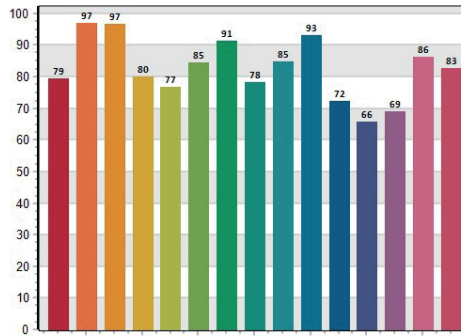
BASIC

CRI	: 67,5
X	: 0,3062
Y	: 0,3174
CCT	: 6999
LUX	: 820,4

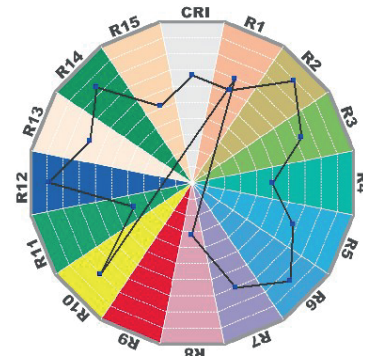
CRI: 67,51



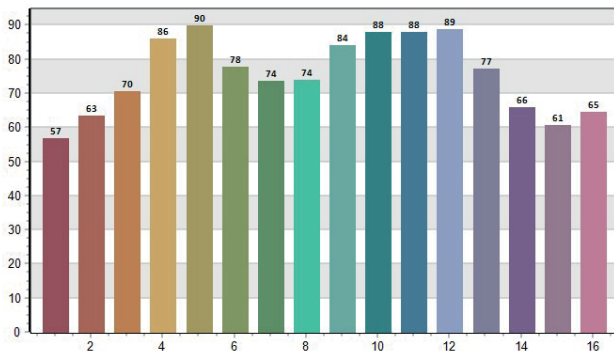
CQS: 80,26



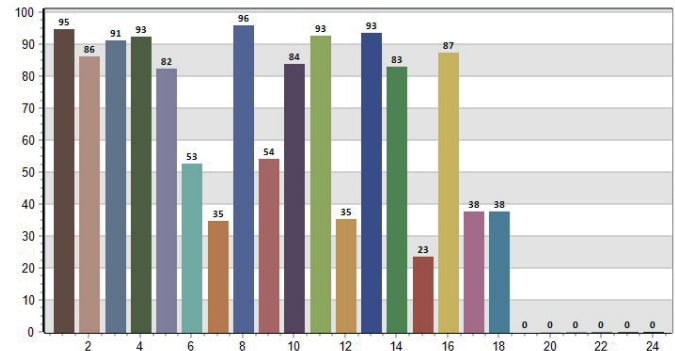
CRI-2



TM30: 78,96



TLCI: 48,87



CRI values, only R1-R8 are used to calculate final CRI

R1	R2	R3	R4	R5	R6	R7	R8	R9	R10	R11	R12	R13	R14	R15
63,1	91,1	74,7	50,8	68,9	87,5	71,2	32,9	-70,6	81,4	39,1	90,2	69,4	85,2	52,1

TM30 C values, 16 binned values out of total of 99 C values

C1	C2	C3	C4	C5	C6	C7	C8	C9	C10	C11	C12	C13	C14	C15	C16
56,7	63,2	70,4	85,9	89,8	77,6	73,6	74,0	83,9	87,8	87,9	88,7	77,3	65,8	60,6	64,5

CQS Q values

Q1	Q2	Q3	Q4	Q5	Q6	Q7	Q8	Q9	Q10	Q11	Q12	Q13	Q14	Q15
79,5	97,0	96,8	80,1	76,8	84,6	91,3	78,2	84,7	93,0	72,3	65,7	69,0	86,3	82,6

Macro 5600K Test Report

Medium Zoom @ 5m



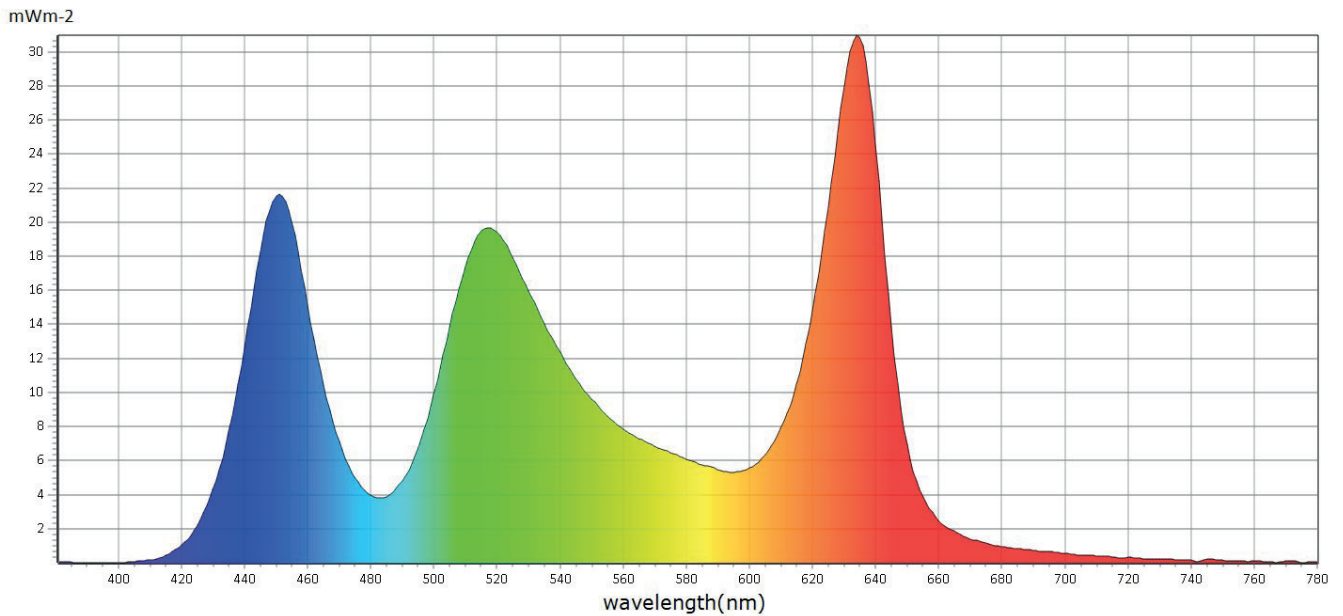
Information

BASIC

User :	Measure Time :11:47:31
Model NO. : MK350S PREMIUM	Light Source :
Memo :	
Zoom 127 - Fan Auto - 5600	

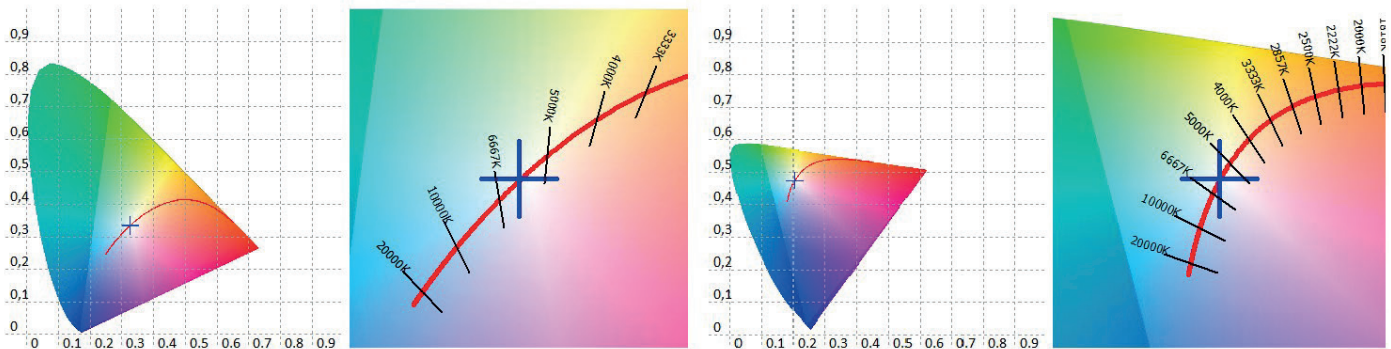
CRI	: 66,6
X	: 0,3250
Y	: 0,3351
CCT	: 5845
LUX	: 781,1

Spectrum



CIE1931

CIE1976



Macro 5600K Test Report

Medium Zoom @ 5m



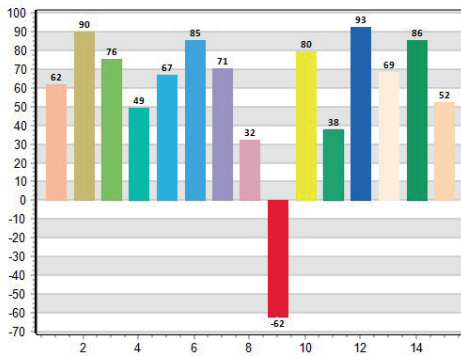
Information

BASIC

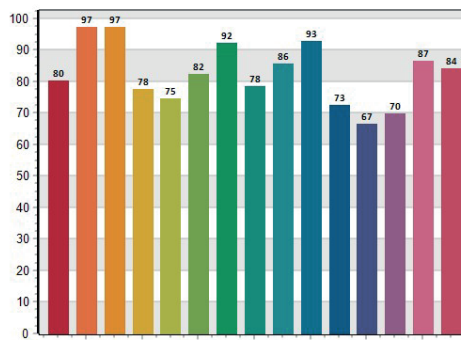
User :	Measure Time :11:47:31
Model NO. : MK350S PREMIUM	Light Source :
Memo :	
Zoom 127 - Fan Auto - 5600	

CRI	: 66,6
X	: 0,3250
Y	: 0,3351
CCT	: 5845
LUX	: 781,1

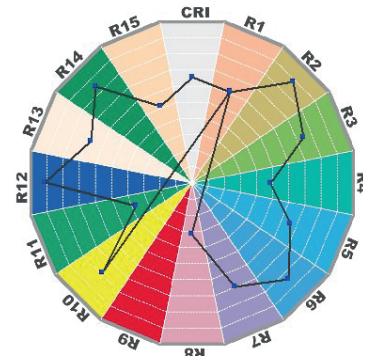
CRI: 66,64



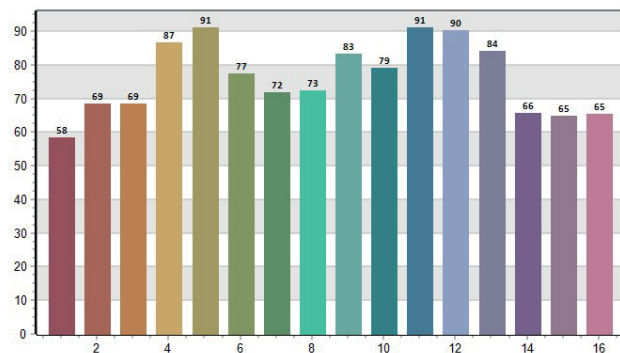
CQS: 80,23



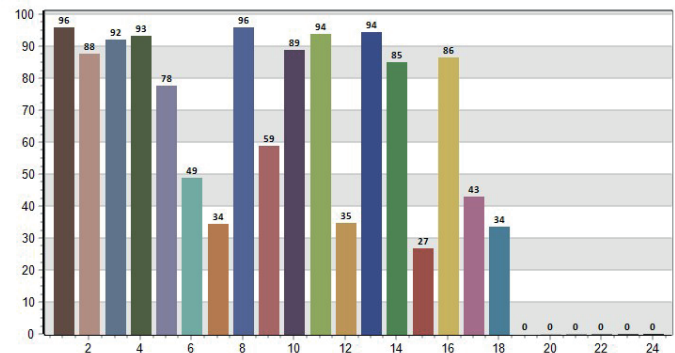
CRI-2



TM30: 79,41



TLCI: 50,10



CRI values, only R1-R8 are used to calculate final CRI

R1	R2	R3	R4	R5	R6	R7	R8	R9	R10	R11	R12	R13	R14	R15
62,1	90,3	75,7	49,5	67,0	85,5	70,7	32,4	-62,1	79,7	37,9	92,7	68,6	85,7	52,4

TM30 C values, 16 binned values out of total of 99 C values

C1	C2	C3	C4	C5	C6	C7	C8	C9	C10	C11	C12	C13	C14	C15	C16
58,5	68,6	68,7	86,8	91,2	77,4	71,9	72,6	83,3	79,2	91,1	90,2	84,3	65,7	64,9	65,3

CQS Q values

Q1	Q2	Q3	Q4	Q5	Q6	Q7	Q8	Q9	Q10	Q11	Q12	Q13	Q14	Q15
80,4	97,2	97,1	77,6	74,6	82,3	92,1	78,4	85,6	92,6	72,6	66,5	69,9	86,6	84,1

Macro 5000K Test Report

Medium Zoom @ 5m



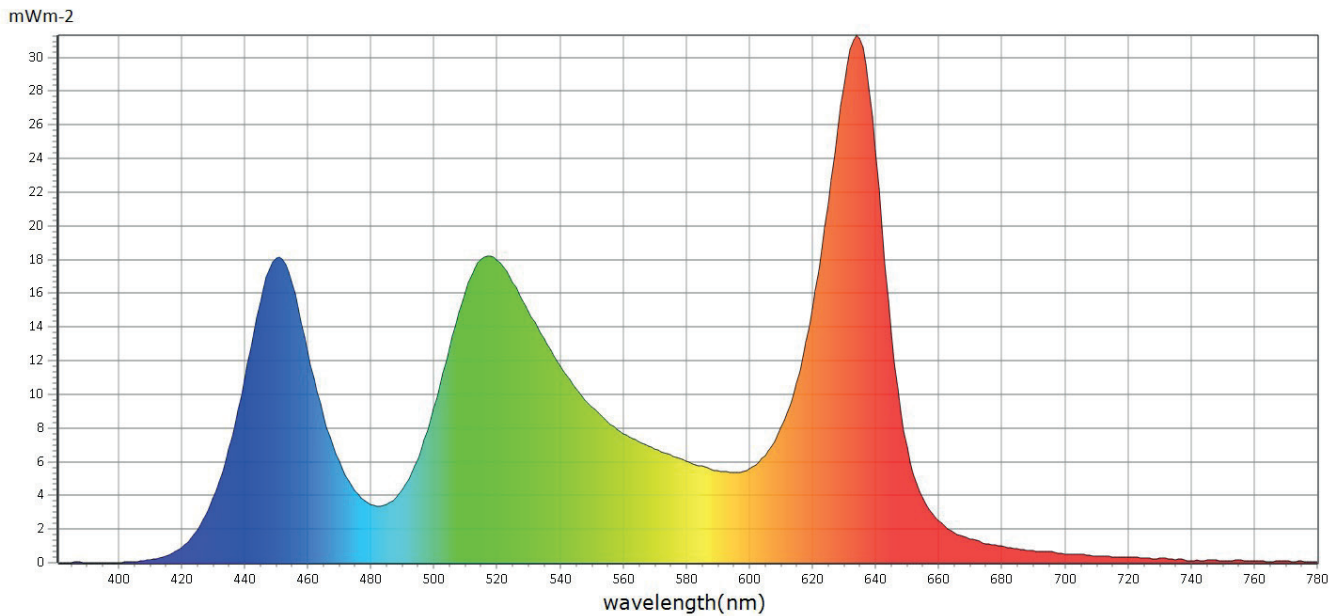
Information

User :	Measure Time :11:47:28
Model NO. : MK350S PREMIUM	Light Source :
Memo :	
Zoom 127 - Fan Auto - 5000	

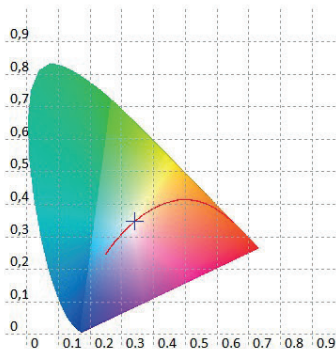
BASIC

CRI	: 66,3
X	: 0,3401
Y	: 0,3476
CCT	: 5182
LUX	: 752,0

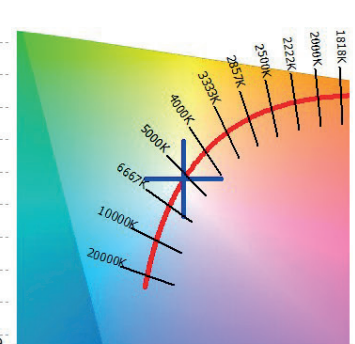
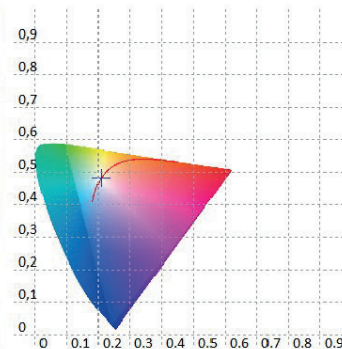
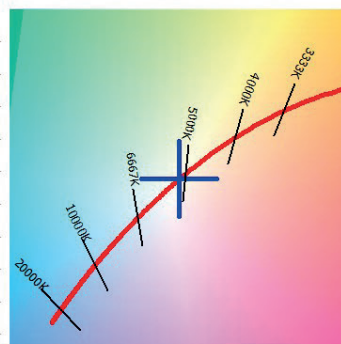
Spectrum



CIE1931



CIE1976



Macro 5000K Test Report

Medium Zoom @ 5m



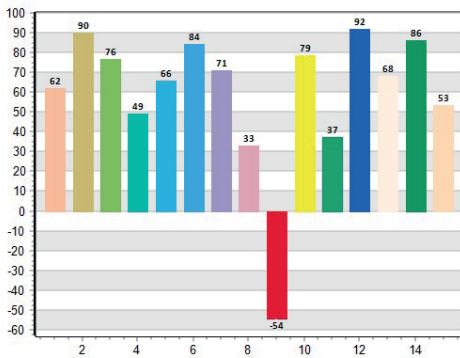
Information

BASIC

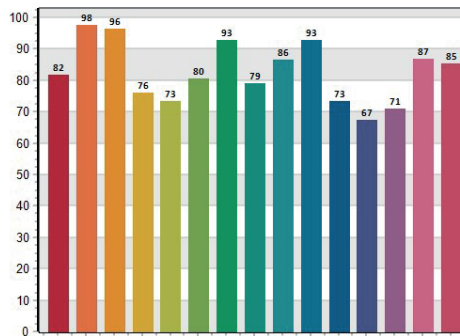
User :	Measure Time :11:47:28
Model NO. : MK350S PREMIUM	Light Source :
Memo :	
Zoom 127 - Fan Auto - 5000	

CRI	: 66,3
X	: 0,3401
Y	: 0,3476
CCT	: 5182
LUX	: 752,0

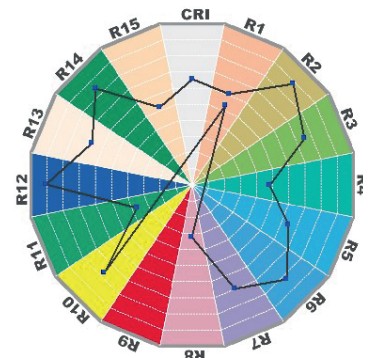
CRI: 66,28



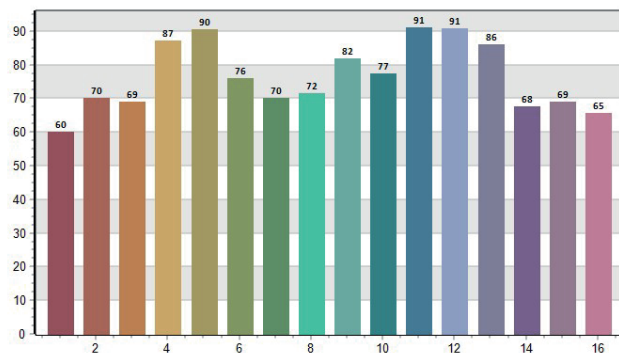
CQS: 80,36



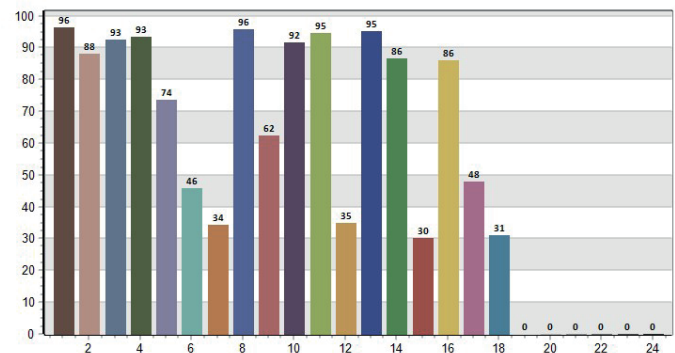
CRI-2



TM30: 79,71



TLCI: 50,96



CRI values, only R1-R8 are used to calculate final CRI

R1	R2	R3	R4	R5	R6	R7	R8	R9	R10	R11	R12	R13	R14	R15
61,7	89,7	76,5	48,9	65,8	84,0	70,8	32,9	-54,3	78,6	37,3	91,7	68,1	86,1	53,1

TM30 C values, 16 binned values out of total of 99 C values

C1	C2	C3	C4	C5	C6	C7	C8	C9	C10	C11	C12	C13	C14	C15	C16
60,1	70,0	68,8	87,1	90,4	76,0	70,1	71,6	81,8	77,3	91,0	90,8	86,1	67,6	69,0	65,5

CQS Q values

Q1	Q2	Q3	Q4	Q5	Q6	Q7	Q8	Q9	Q10	Q11	Q12	Q13	Q14	Q15
81,6	97,6	96,4	76,1	73,2	80,4	92,9	78,9	86,4	92,6	73,2	67,4	70,8	86,9	85,4

Macro 4500K Test Report

Medium Zoom @ 5m



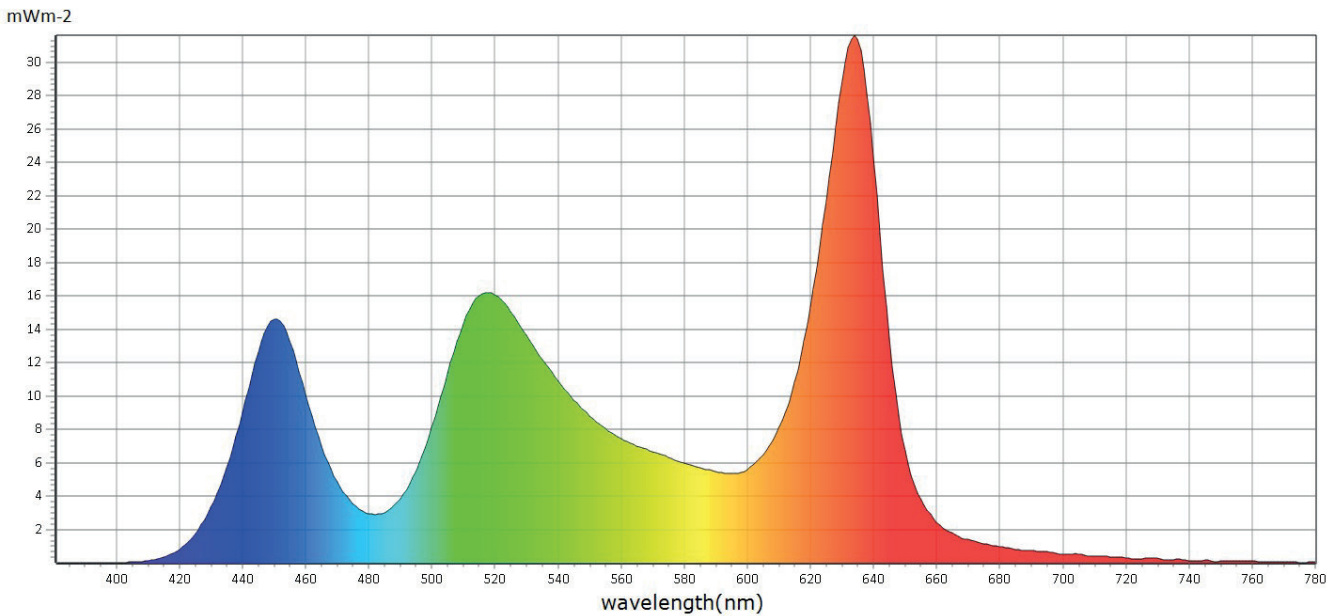
Information

User :	Measure Time :11:47:25
Model NO. : MK350S PREMIUM	Light Source :
Memo :	
Zoom 127 - Fan Auto - 4500	

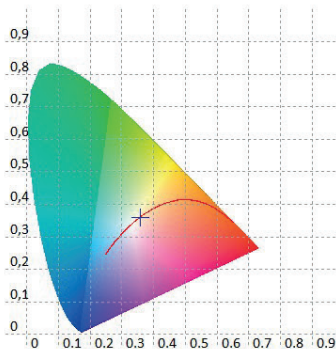
BASIC

CRI	: 66,5
X	: 0,3590
Y	: 0,3602
CCT	: 4538
LUX	: 714,4

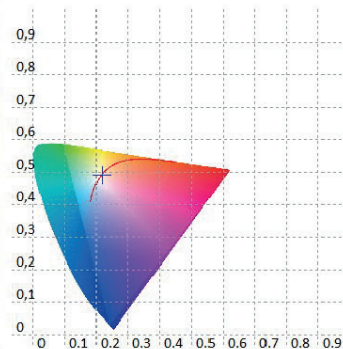
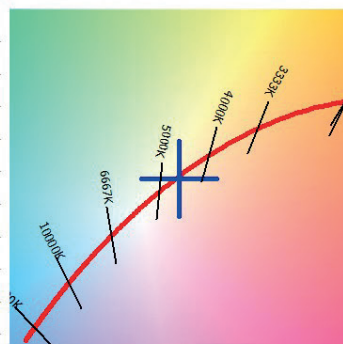
Spectrum



CIE1931



CIE1976



Macro 4500K Test Report

Medium Zoom @ 5m



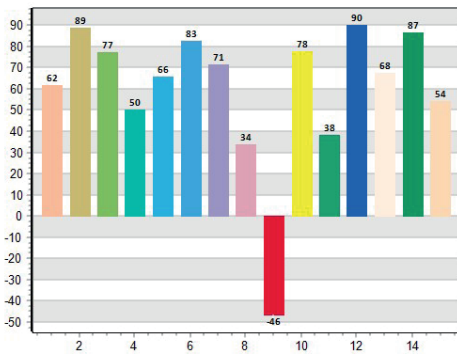
Information

BASIC

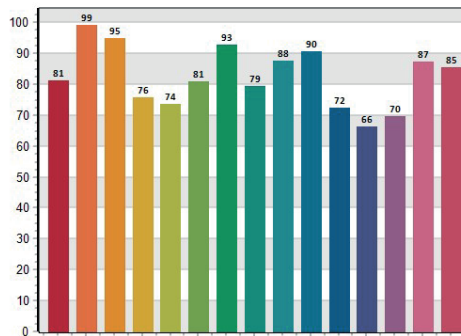
User :	Measure Time :11:47:25
Model NO. : MK350S PREMIUM	Light Source :
Memo :	
Zoom 127 - Fan Auto - 4500	

CRI	: 66,5
X	: 0,3590
Y	: 0,3602
CCT	: 4538
LUX	: 714,4

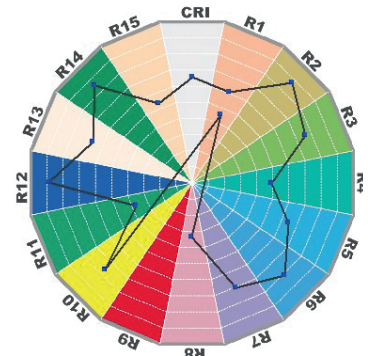
CRI: 66,47



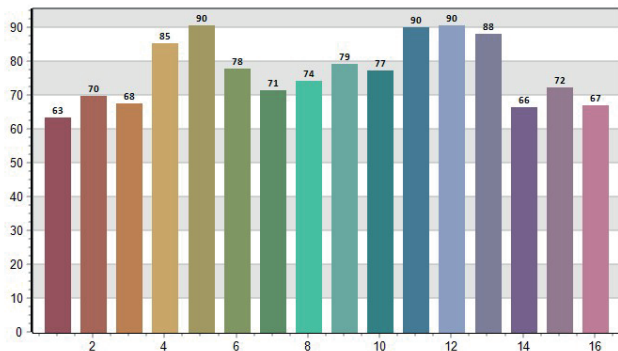
CQS: 80,08



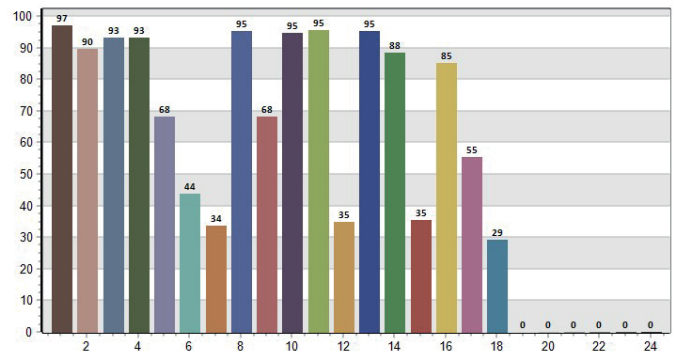
CRI-2



TM30: 79,98



TLCI: 51,71



CRI values, only R1-R8 are used to calculate final CRI

R1	R2	R3	R4	R5	R6	R7	R8	R9	R10	R11	R12	R13	R14	R15
61,7	88,9	77,4	50,0	65,6	82,8	71,5	33,9	-46,5	77,7	38,4	90,1	67,6	86,5	54,2

TM30 C values, 16 binned values out of total of 99 C values

C1	C2	C3	C4	C5	C6	C7	C8	C9	C10	C11	C12	C13	C14	C15	C16
63,3	69,6	67,5	85,2	90,4	77,8	71,3	74,1	79,1	77,1	89,9	90,5	88,0	66,3	72,0	67,0

CQS Q values

Q1	Q2	Q3	Q4	Q5	Q6	Q7	Q8	Q9	Q10	Q11	Q12	Q13	Q14	Q15
81,2	99,1	94,9	75,8	73,6	80,8	92,9	79,4	87,7	90,5	72,4	66,3	69,6	87,2	85,4

Macro 4000K Test Report

Medium Zoom @ 5m



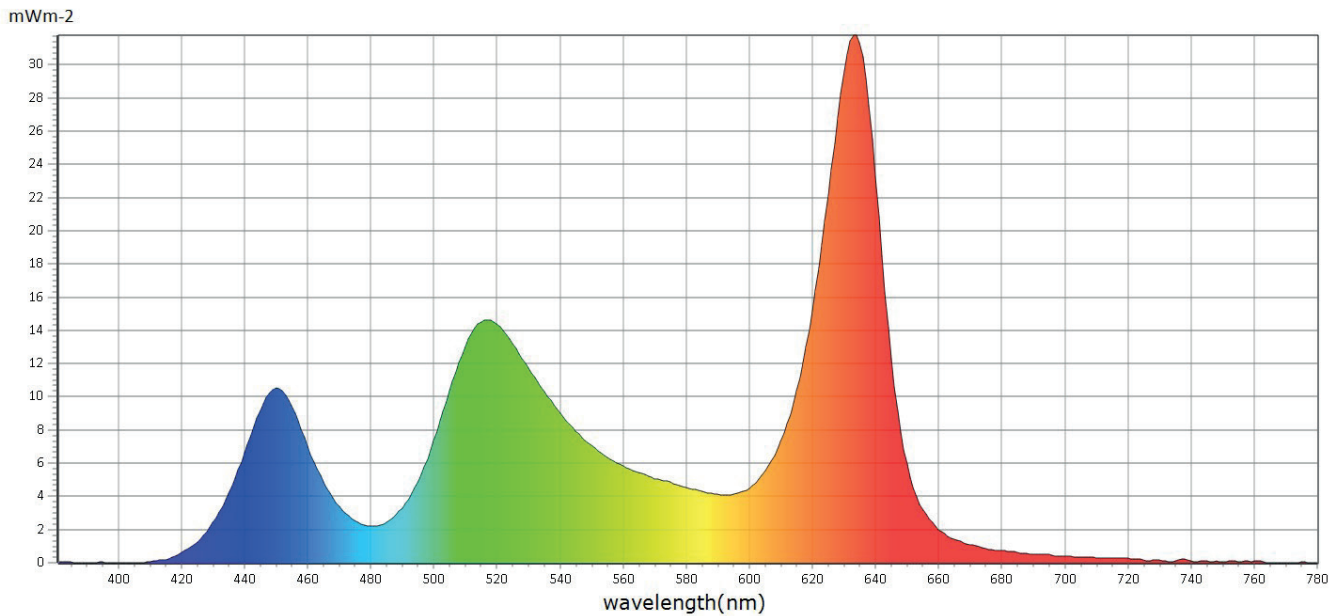
Information

User :	Measure Time :11:47:13
Model NO. : MK350S PREMIUM	Light Source :
Memo :	
Zoom 127 - Fan Auto - 4000	

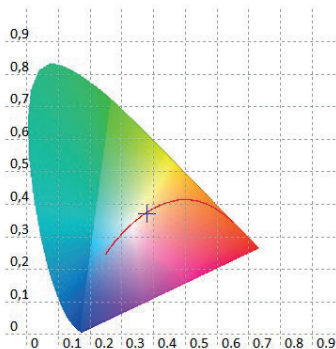
BASIC

CRI	: 57,5
X	: 0,3793
Y	: 0,3725
CCT	: 4001
LUX	: 614,9

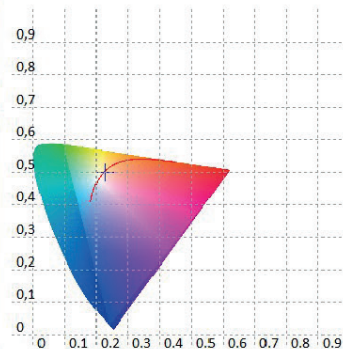
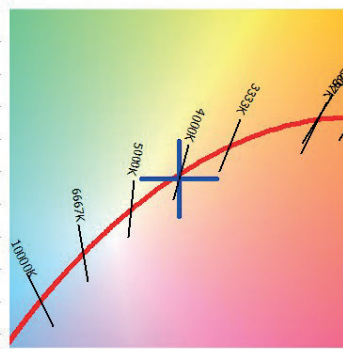
Spectrum



CIE1931



CIE1976



Macro 4000K Test Report

Medium Zoom @ 5m



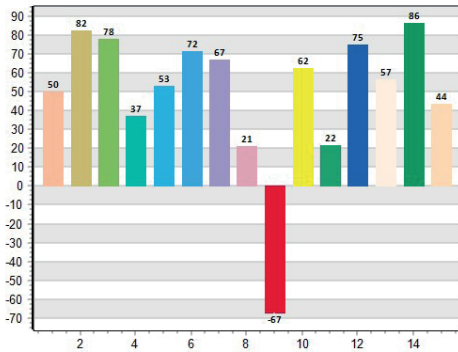
Information

BASIC

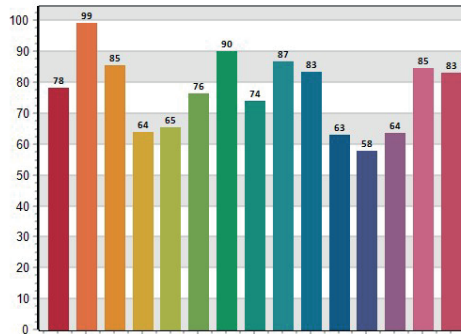
User :	Measure Time :11:47:13
Model NO. : MK350S PREMIUM	Light Source :
Memo :	
Zoom 127 - Fan Auto - 4000	

CRI	: 57,5
X	: 0,3793
Y	: 0,3725
CCT	: 4001
LUX	: 614,9

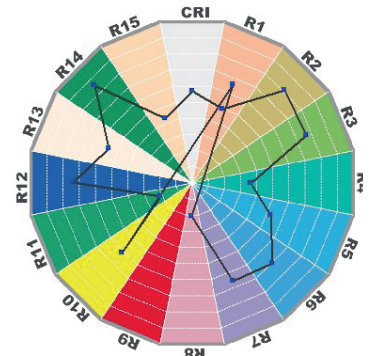
CRI: 57,53



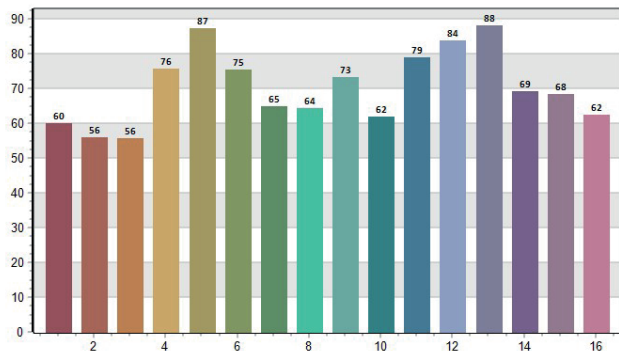
CQS: 74,23



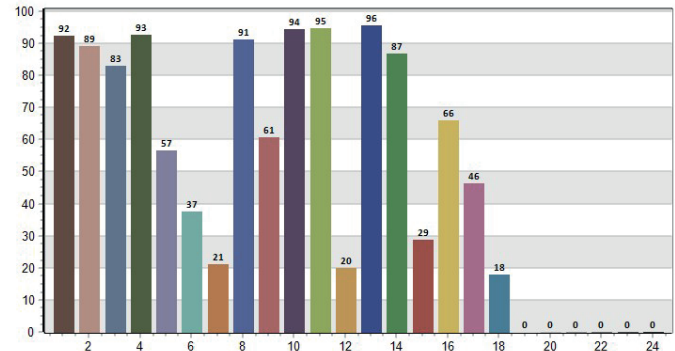
CRI-2



TM30: 73,96



TLCI: 37,68



CRI values, only R1-R8 are used to calculate final CRI

R1	R2	R3	R4	R5	R6	R7	R8	R9	R10	R11	R12	R13	R14	R15
50,2	82,4	77,8	37,0	53,2	71,7	66,8	21,1	-67,1	62,3	21,7	74,9	56,6	86,5	43,8

TM30 C values, 16 binned values out of total of 99 C values

C1	C2	C3	C4	C5	C6	C7	C8	C9	C10	C11	C12	C13	C14	C15	C16
59,9	55,9	55,5	75,7	87,1	75,2	64,8	64,3	73,3	62,0	78,8	83,8	88,0	69,2	68,5	62,3

CQS Q values

Q1	Q2	Q3	Q4	Q5	Q6	Q7	Q8	Q9	Q10	Q11	Q12	Q13	Q14	Q15
78,2	99,2	85,5	63,8	65,4	76,3	90,2	74,0	86,7	83,4	63,1	57,8	63,7	84,6	83,0

Macro 3200K Test Report

Medium Zoom @ 5m



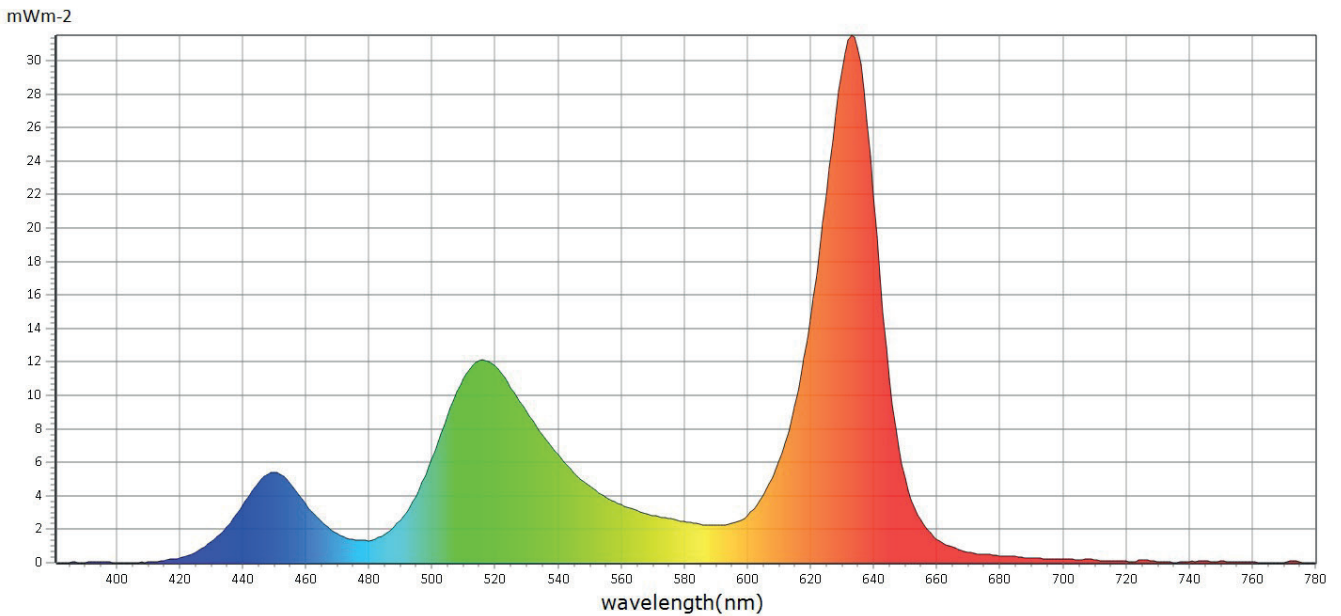
Information

User :	Measure Time :11:47:10
Model NO. : MK350S PREMIUM	Light Source :
Memo :	
Zoom 127 - Fan Auto - 3200	

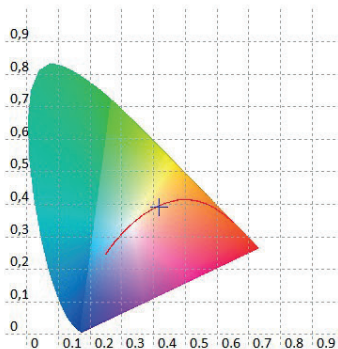
BASIC

CRI	: 39,9
X	: 0,4178
Y	: 0,3921
CCT	: 3251
LUX	: 468,3

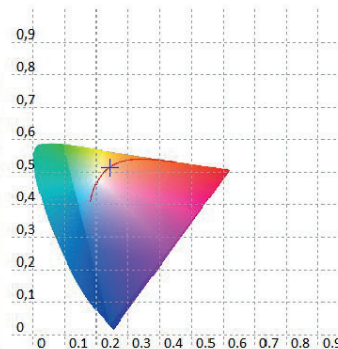
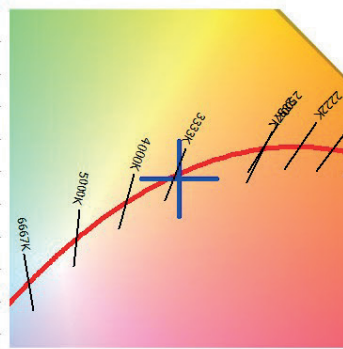
Spectrum



CIE1931



CIE1976



Macro 3200K Test Report

Medium Zoom @ 5m



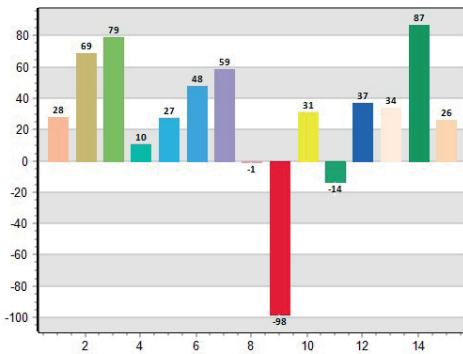
Information

User :	Measure Time :11:47:10
Model NO. : MK350S PREMIUM	Light Source :
Memo :	
Zoom 127 - Fan Auto - 3200	

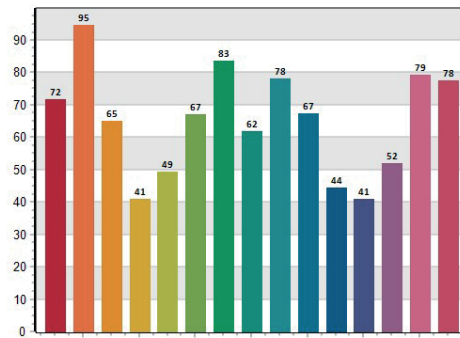
BASIC

CRI	: 39,9
X	: 0,4178
Y	: 0,3921
CCT	: 3251
LUX	: 468,3

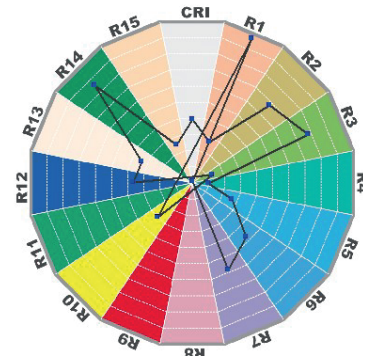
CRI: 39,91



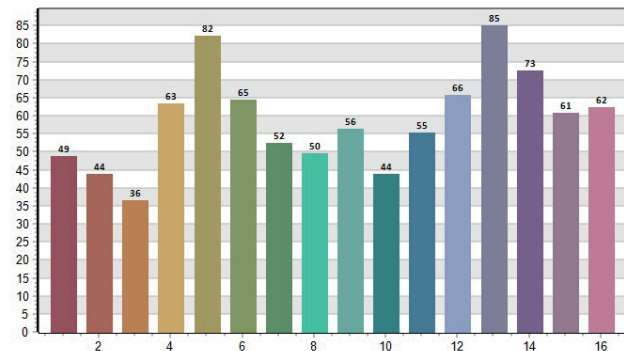
CQS: 61,28



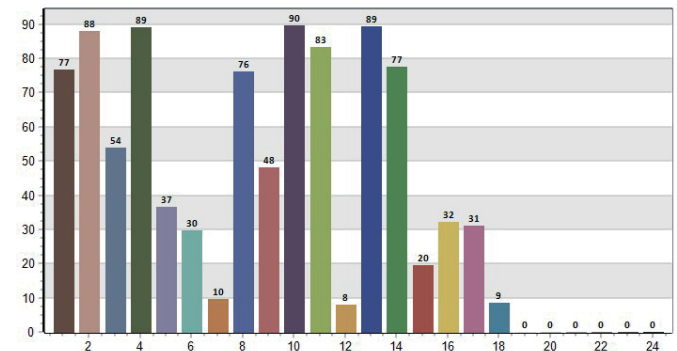
CRI-2



TM30: 63,23



TLCI: 20,27



CRI values, only R1-R8 are used to calculate final CRI

R1	R2	R3	R4	R5	R6	R7	R8	R9	R10	R11	R12	R13	R14	R15
27,9	68,9	79,2	10,3	27,4	47,8	58,9	-1,2	-98,3	30,7	-13,7	37,0	34,1	86,9	25,9

TM30 C values, 16 binned values out of total of 99 C values

C1	C2	C3	C4	C5	C6	C7	C8	C9	C10	C11	C12	C13	C14	C15	C16
48,7	43,9	36,4	63,4	82,3	64,6	52,3	49,6	56,4	43,8	55,3	65,9	85,1	72,6	60,8	62,4

CQS Q values

Q1	Q2	Q3	Q4	Q5	Q6	Q7	Q8	Q9	Q10	Q11	Q12	Q13	Q14	Q15
71,5	94,6	65,0	41,0	49,2	67,0	83,5	61,9	77,9	67,3	44,4	40,9	51,9	79,2	77,6

Macro 3000K Test Report

Medium Zoom @ 5m



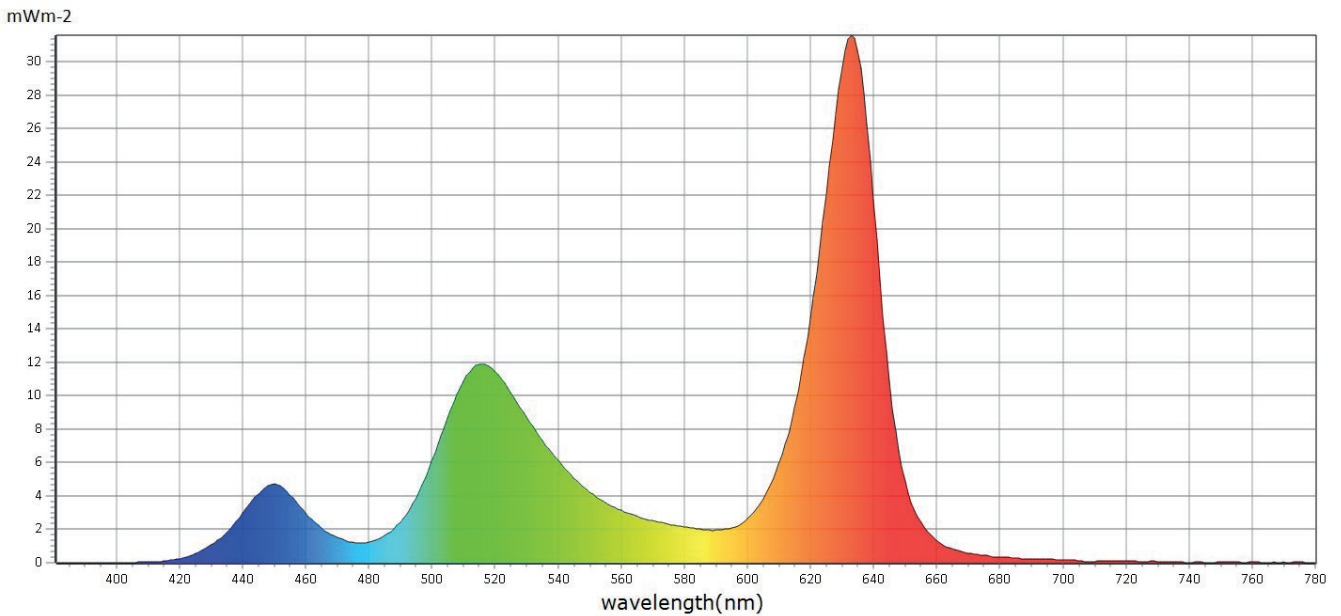
Information

BASIC

User :	Measure Time :11:47:07
Model NO. : MK350S PREMIUM	Light Source :
Memo :	
Zoom 127 - Fan Auto - 3000	

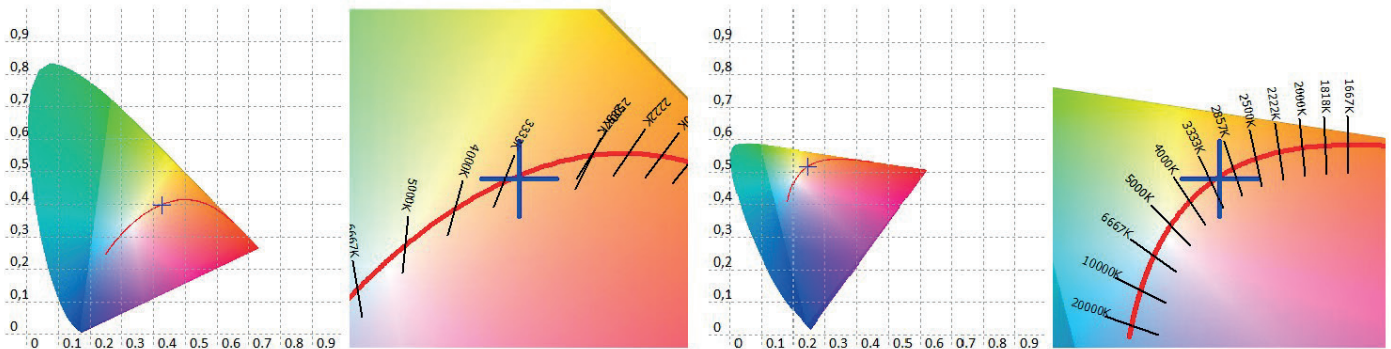
CRI	: 36,6
X	: 0,4256
Y	: 0,3968
CCT	: 3139
LUX	: 449,9

Spectrum



CIE1931

CIE1976



Macro 3000K Test Report

Medium Zoom @ 5m



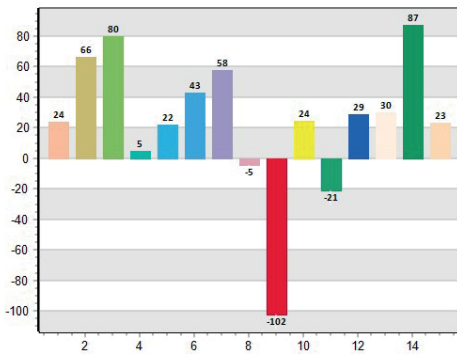
Information

User :	Measure Time :11:47:07
Model NO. : MK350S PREMIUM	Light Source :
Memo :	
Zoom 127 - Fan Auto - 3000	

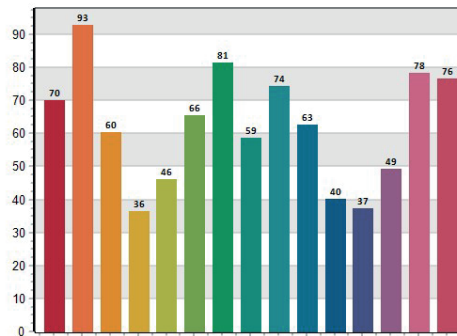
BASIC

CRI	: 36,6
X	: 0,4256
Y	: 0,3968
CCT	: 3139
LUX	: 449,9

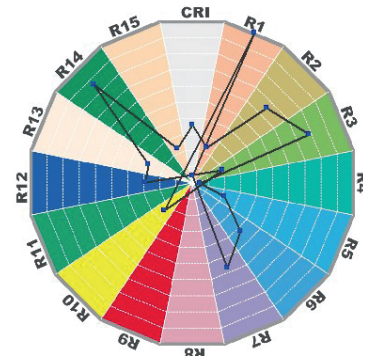
CRI: 36,59



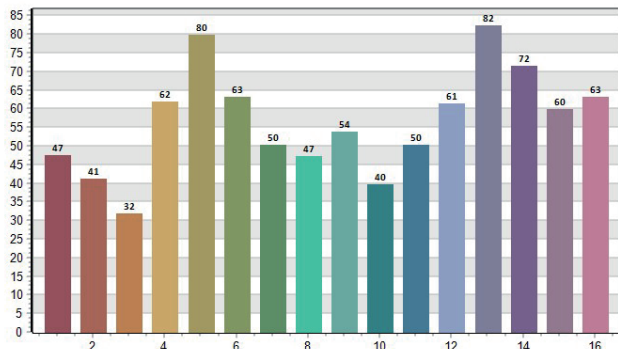
CQS: 58,33



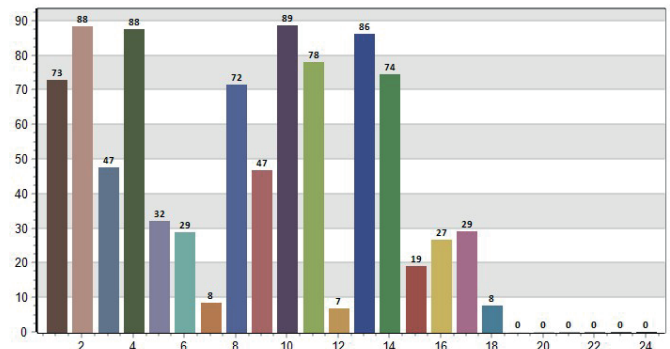
CRI-2



TM30: 60,78



TLCI: 17,81



CRI values, only R1-R8 are used to calculate final CRI

R1	R2	R3	R4	R5	R6	R7	R8	R9	R10	R11	R12	R13	R14	R15
23,7	66,3	79,6	5,0	22,3	42,8	57,6	-4,5	-102,2	24,4	-21,0	29,0	29,8	87,1	23,2

TM30 C values, 16 binned values out of total of 99 C values

C1	C2	C3	C4	C5	C6	C7	C8	C9	C10	C11	C12	C13	C14	C15	C16
47,4	41,2	31,9	61,9	79,8	63,1	50,2	47,1	53,9	39,6	50,4	61,3	82,3	71,6	59,7	63,1

CQS Q values

Q1	Q2	Q3	Q4	Q5	Q6	Q7	Q8	Q9	Q10	Q11	Q12	Q13	Q14	Q15
70,0	92,8	60,4	36,4	46,1	65,5	81,5	58,8	74,4	62,8	40,2	37,2	49,4	78,3	76,5

Macro 2700K Test Report

Medium Zoom @ 5m



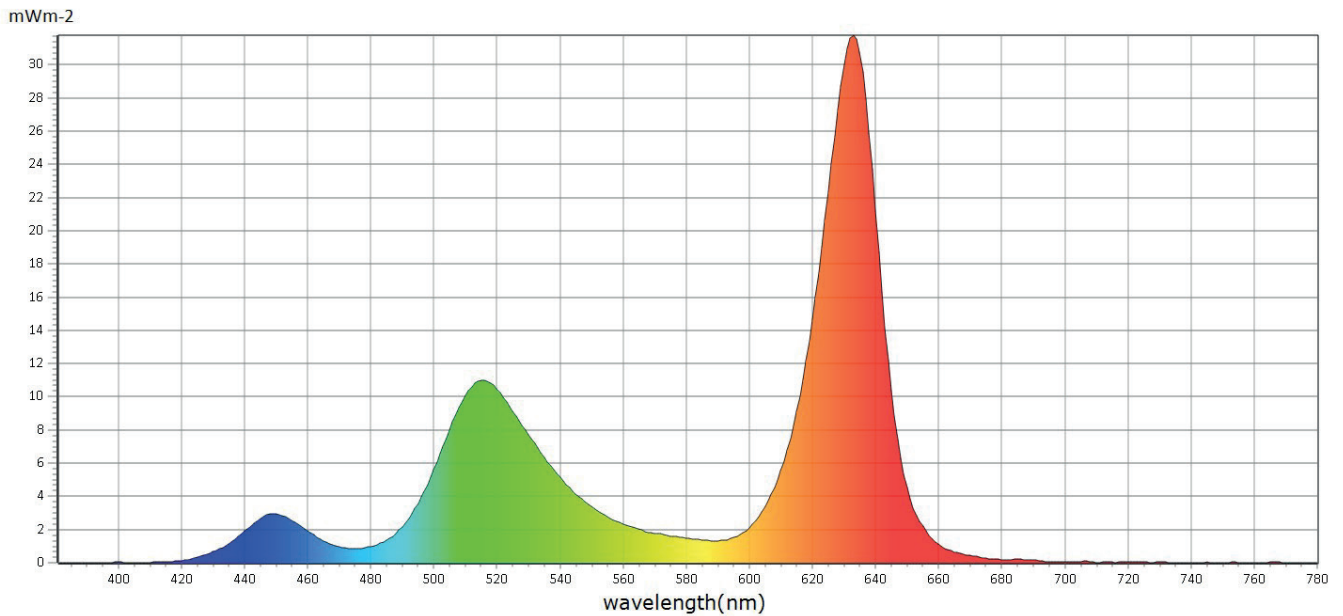
Information

User :	Measure Time :11:47:04
Model NO. : MK350S PREMIUM	Light Source :
Memo :	
Zoom 127 - Fan Auto - 2700	

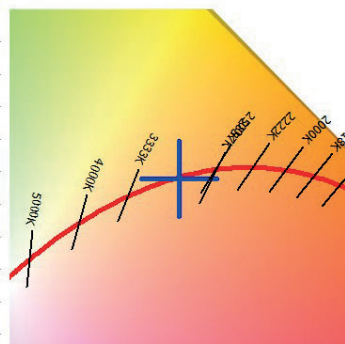
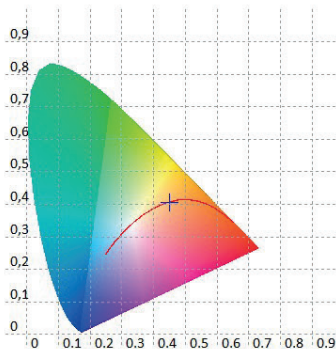
BASIC

CRI	: 27,9
X	: 0,4507
Y	: 0,4066
CCT	: 2801
LUX	: 400,6

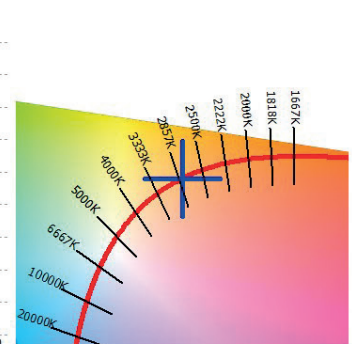
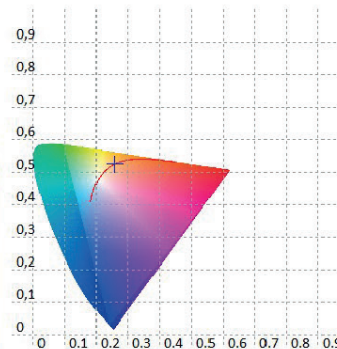
Spectrum



CIE1931



CIE1976



Macro 2700K Test Report

Medium Zoom @ 5m



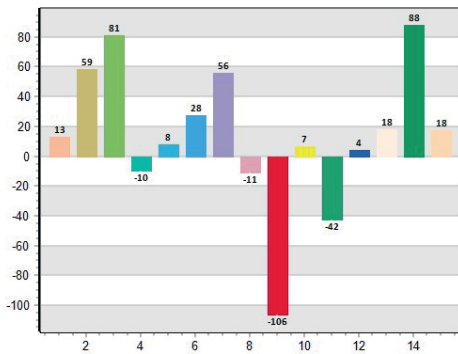
Information

BASIC

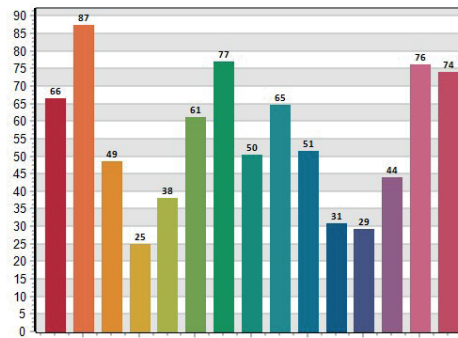
User :	Measure Time :11:47:04
Model NO. : MK350S PREMIUM	Light Source :
Memo :	
Zoom 127 - Fan Auto - 2700	

CRI	: 27,9
X	: 0,4507
Y	: 0,4066
CCT	: 2801
LUX	: 400,6

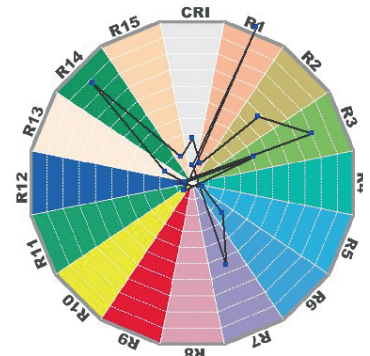
CRI: 27,94



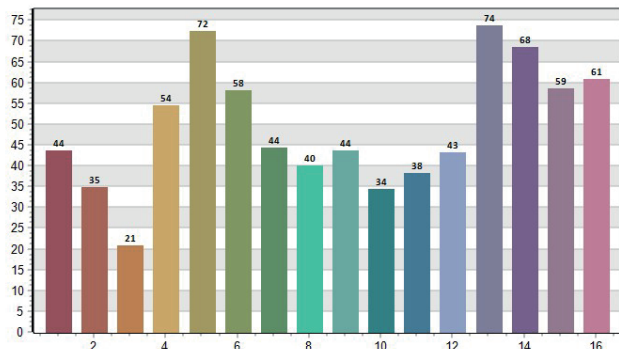
CQS: 50,94



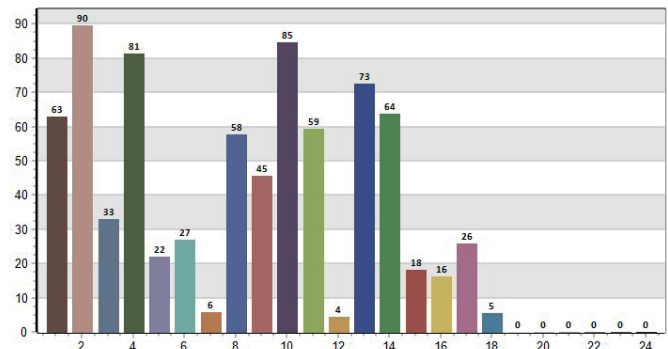
CRI-2



TM30: 54,05



TLCI: 12,79



CRI values, only R1-R8 are used to calculate final CRI

R1	R2	R3	R4	R5	R6	R7	R8	R9	R10	R11	R12	R13	R14	R15
12,9	58,7	81,4	-9,7	7,7	27,5	55,8	-10,8	-106,3	6,7	-42,2	4,2	18,0	88,1	17,5

TM30 C values, 16 binned values out of total of 99 C values

C1	C2	C3	C4	C5	C6	C7	C8	C9	C10	C11	C12	C13	C14	C15	C16
43,7	34,8	20,8	54,4	72,3	58,1	44,3	40,0	43,6	34,3	38,1	43,1	73,7	68,4	58,5	60,9

CQS Q values

Q1	Q2	Q3	Q4	Q5	Q6	Q7	Q8	Q9	Q10	Q11	Q12	Q13	Q14	Q15
66,5	87,4	48,6	25,1	38,2	61,2	76,8	50,4	64,5	51,5	30,9	29,3	44,0	76,2	74,0

RGBW @100% Spectrum Test Report

Medium Zoom @ 5m



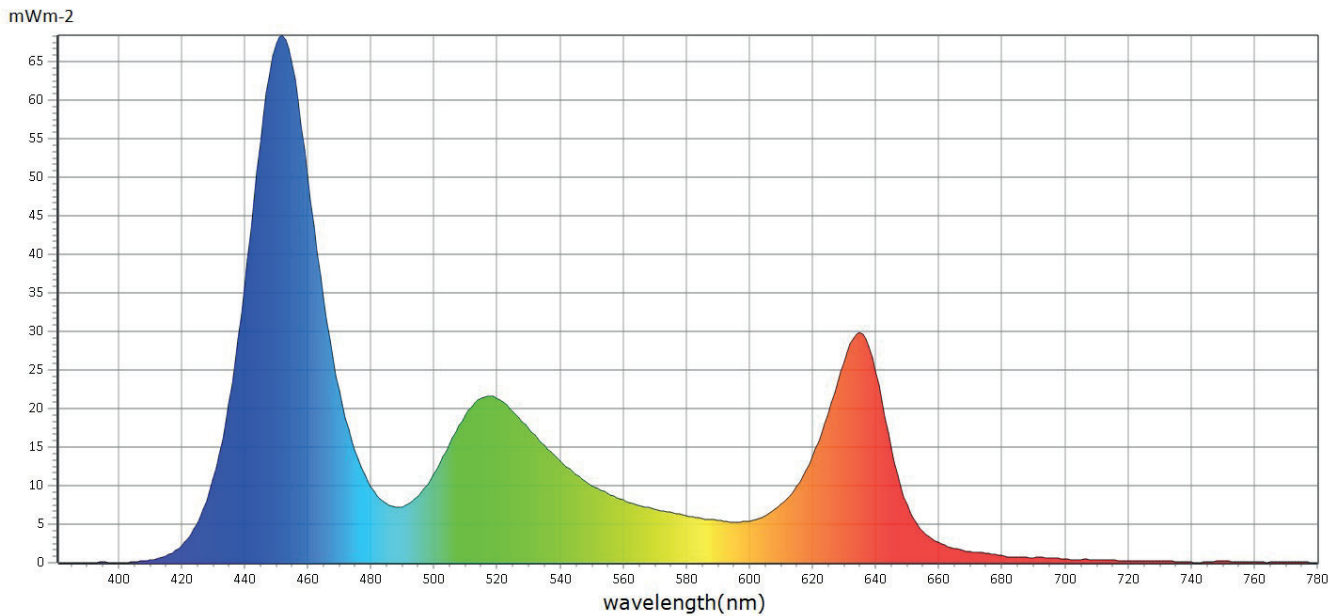
Information

User :	Measure Time :11:41:19
Model NO. : MK350S PREMIUM	Light Source :
Memo :	
Zoom 127 - Fan Auto - RGBW	

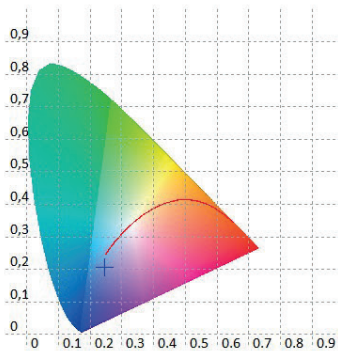
BASIC

CRI	: 0,0
X	: 0,2454
Y	: 0,2065
CCT	: 0
LUX	: 859,0

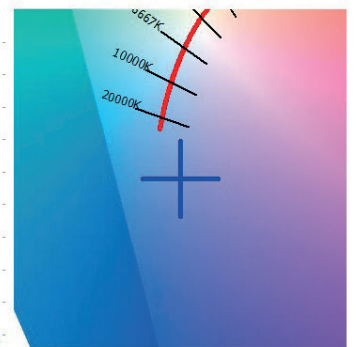
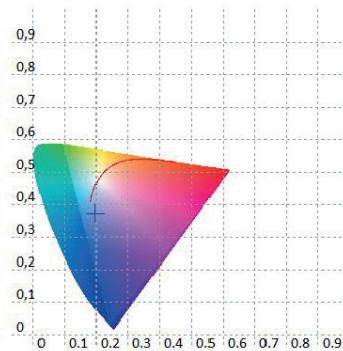
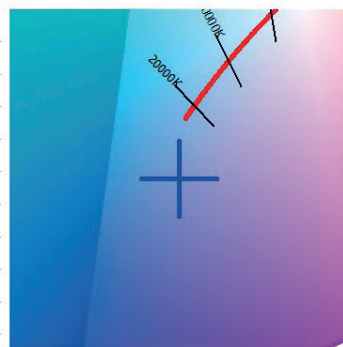
Spectrum



CIE1931



CIE1976



Red @100% Spectrum Test Report

Medium Zoom @ 5m



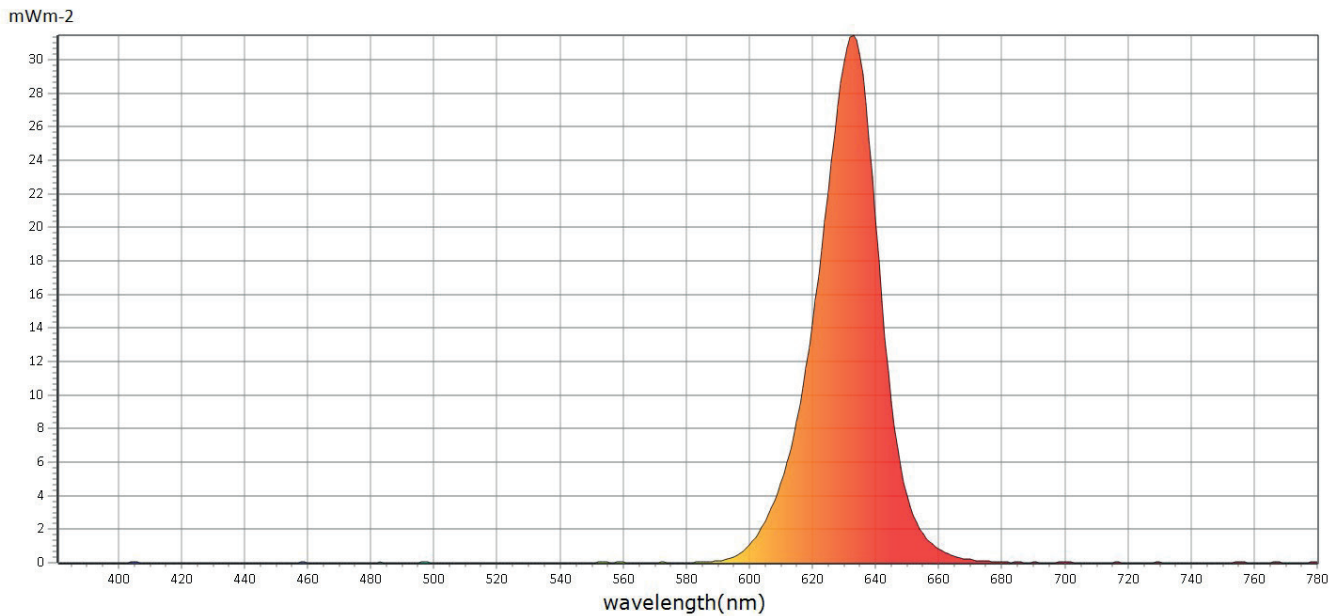
Information

User :	Measure Time :11:41:04
Model NO. : MK350S PREMIUM	Light Source :
Memo :	
Zoom 127 - Fan Auto - R	

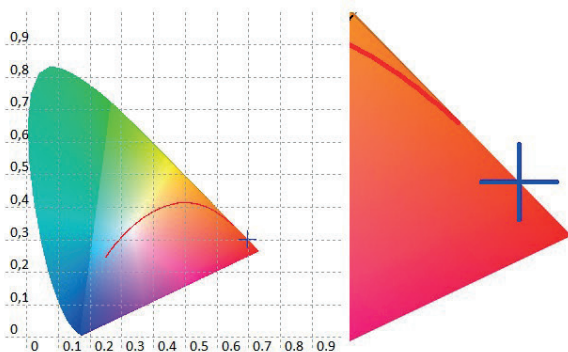
BASIC

CRI	: 0,0
X	: 0,6963
Y	: 0,3024
CCT	: 0
LUX	: 146,3

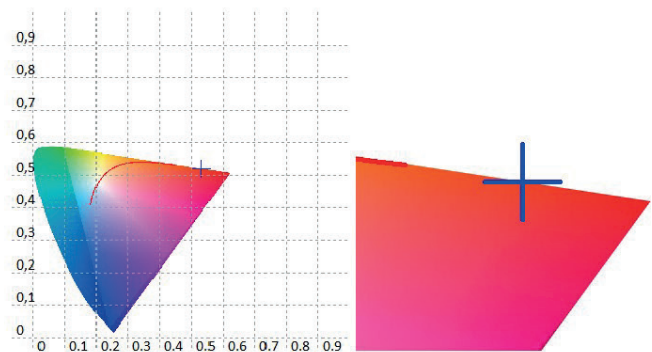
Spectrum



CIE1931



CIE1976



Green @100% Spectrum Test Report

Medium Zoom @ 5m



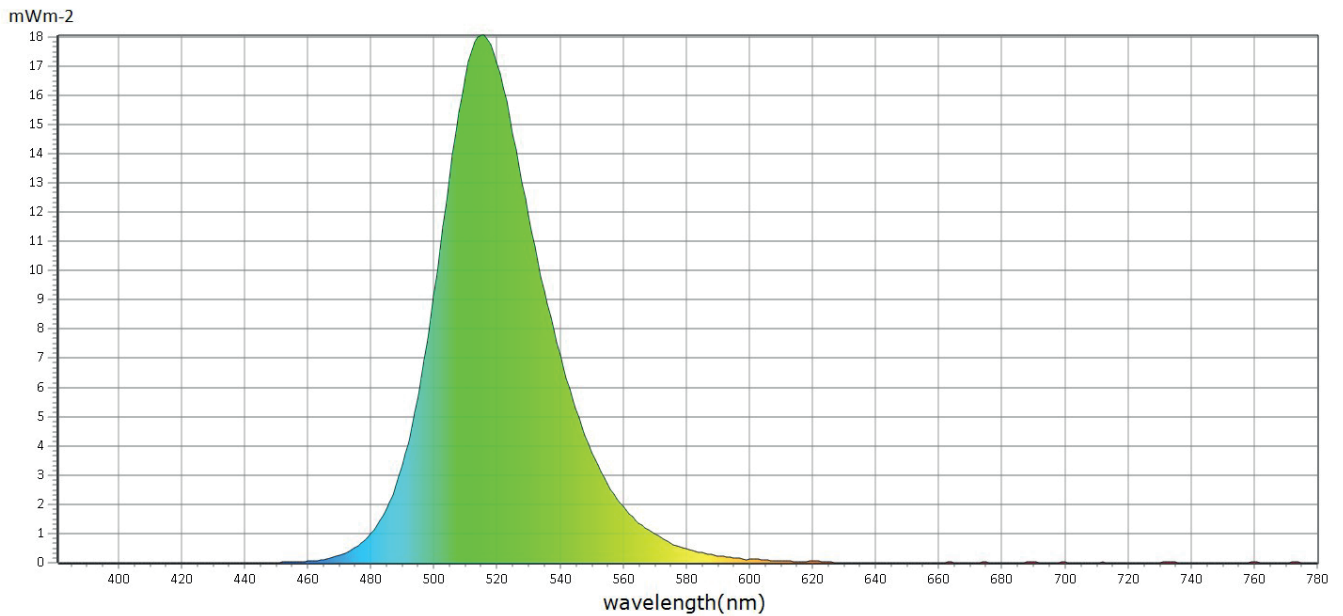
Information

User :	Measure Time :11:41:07
Model NO. : MK350S PREMIUM	Light Source :
Memo :	
Zoom 127 - Fan Auto - G	

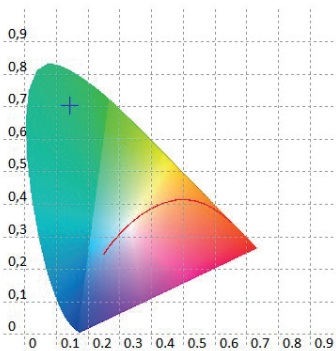
BASIC

CRI	: 0,0
X	: 0,1412
Y	: 0,7033
CCT	: 8459
LUX	: 325,7

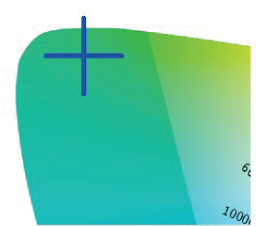
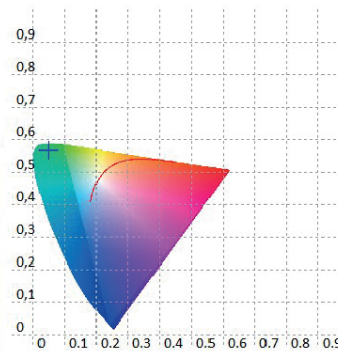
Spectrum



CIE1931



CIE1976



Blue @100% Spectrum Test Report

Medium Zoom @ 5m



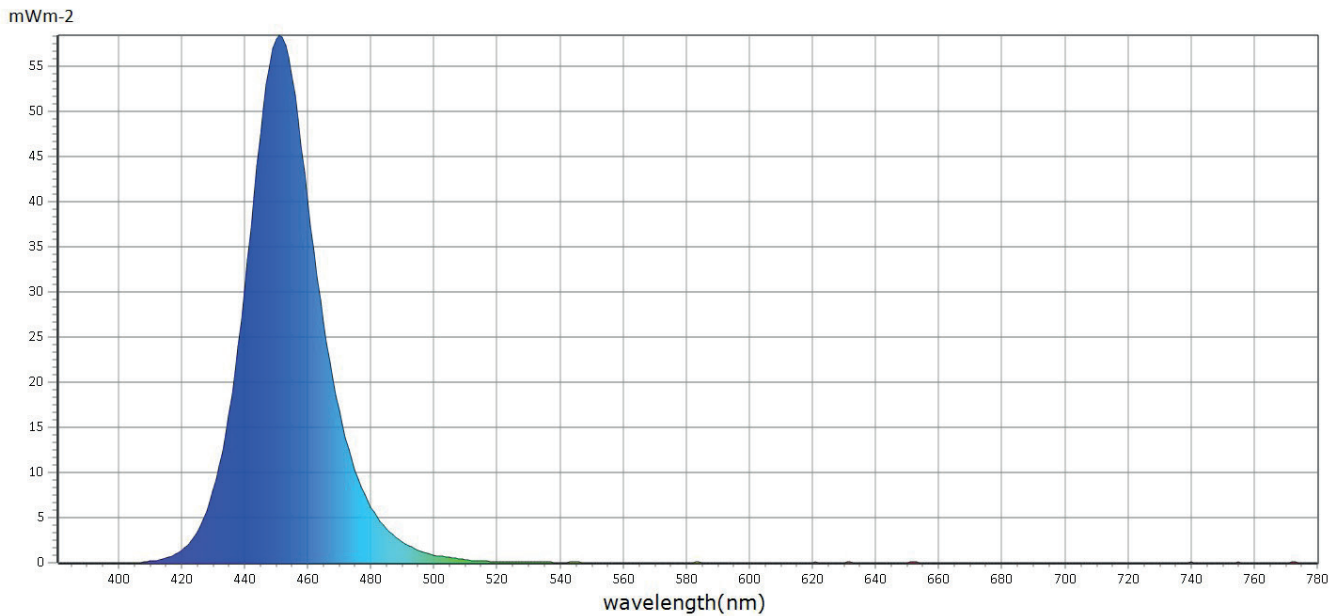
Information

User :	Measure Time :11:41:10
Model NO. : MK350S PREMIUM	Light Source :
Memo :	
Zoom 127 - Fan Auto - B	

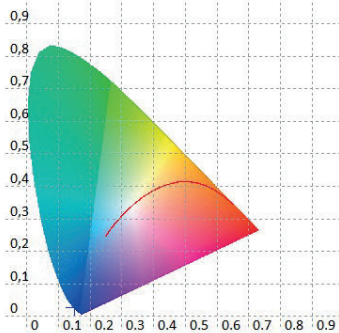
BASIC

CRI	: 0,0
X	: 0,1519
Y	: 0,0271
CCT	: 0
LUX	: 59,38

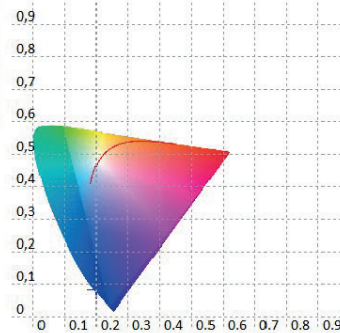
Spectrum



CIE1931



CIE1976



White @100% Spectrum Test Report

Medium Zoom @ 5m



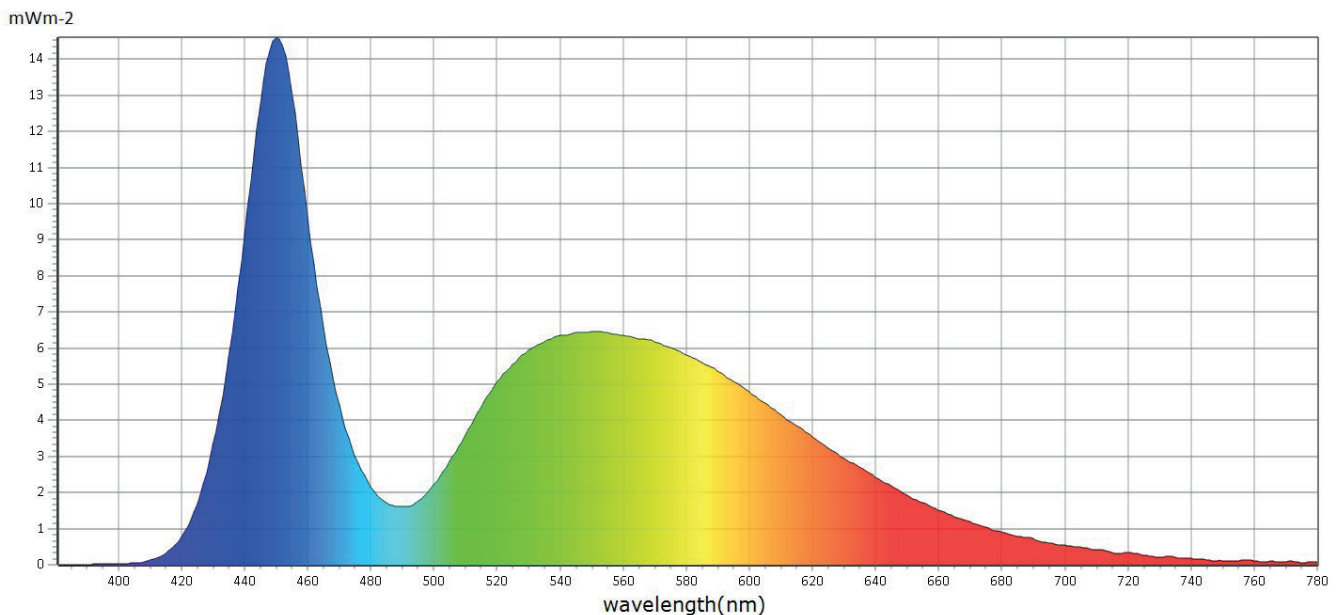
Information

User :	Measure Time :11:41:13
Model NO. : MK350S PREMIUM	Light Source :
Memo :	
Zoom 127 - Fan Auto - W	

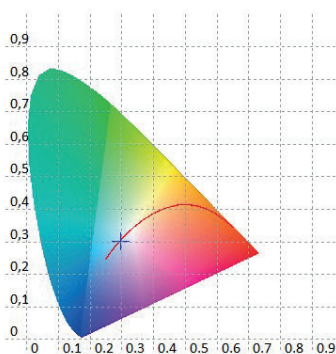
BASIC

CRI	: 74,5
X	: 0,2964
Y	: 0,3020
CCT	: 7978
LUX	: 378,4

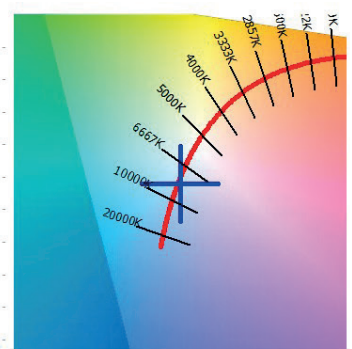
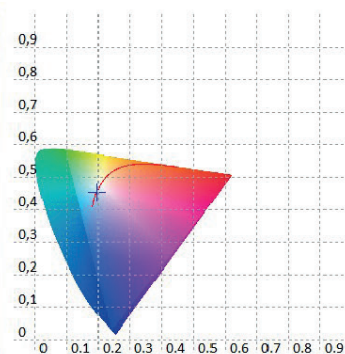
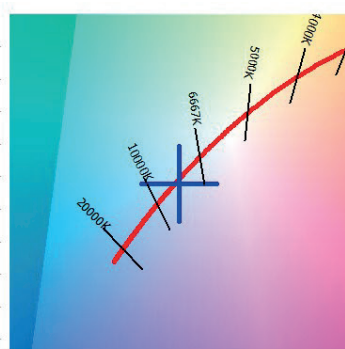
Spectrum



CIE1931



CIE1976



Starway

22 Rue Édouard Buffard
77144 Montevrain
France

starway.eu
